



U.S. LUMBER

Quick Reference Guide

LUMBER FOOTAGE CONVERSION TABLE

To convert board footage to lineal footage, take the board footage and multiply it by the corresponding factors below

ITEM	LINEAR FOOTAGE FACTOR	ITEM	LINEAR FOOTAGE FACTOR	ITEM	LINEAR FOOTAGE FACTOR
1X2	.1667	2X6	1.000	4X12	4.000
1X4	.3333	2X8	1.333		
1X6	.5000	2X10	1.667	6X6	3.000
1X8	.6667	2X12	2.000	6X8	4.000
1X10	.8333			6X10	5.000
1X12	1.000	3X3	.7500	6X12	6.000
		3X4	1.000		
5/4X4	.4167	3X6	1.500	8X8	5.333
5/4X5	.5208	3X8	2.000	8X10	6.667
5/4X6	.6250	3X10	2.500	8X12	8.000
5/4X8	.8333	3X12	3.000		
5/4X10	1.0417			10X10	8.333
5/4X12	1.250	4X4	1.333	10X12	10.00
		4X6	2.000		
2X2	.3333	4X8	2.667	12X12	12.00
2X4	.6667	4X10	3.333		

PATTERN COVERAGE ESTIMATING TABLE

Determine the amount of material needed for the basic types of wood siding by multiplying square footage to be covered by the lineal foot factor

PATTERN	NOMINAL WIDTH	WIDTH		FACTOR FOR LINEAL FEET ¹	FACTOR FOR BOARD FEET ²
		DRESSED	EXPOSED FACE		
BEVEL & BUNGALOW	4	3 1/2	2 1/2	4.8	1.60
	6	5 1/2	4 1/2	2.67	1.33
	8	7 1/4	6 1/4	1.92	1.28
	10	9 1/4	8 1/4	1.45	1.21
DROP, T&G & CHANNEL RUSTIC	4	3 3/8	3 1/8	3.84	1.28
	6	5 3/8	5 1/8	2.34	1.17
	8	7 1/8	6 7/8	1.75	1.16
	10	9 1/8	8 7/8	1.35	1.13

¹ Lineal Foot Factor is derived by dividing 12" by the exposed face width.
² Board Foot Factor is derived by dividing the nominal width by the exposed face width and is based on nominal 1" stock, except log cabin. Log cabin is based on 2" thickness. For nominal 1" stock, except log cabin. Log cabin is based on 2" thickness. For nominal 1 1/2" log cabin, multiply by .75.

Note: Factors do not include any allowance for trim or waste and do not apply to diagonal installations. A 10% allowance (for trim and waste) should be added to the square footage required before the factors are used.

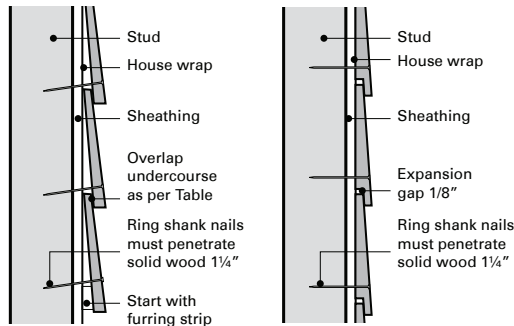
DECK COVERAGE ESTIMATING TABLE

To help figure the amount of decking needed for a project, use the following linear footage calculator.

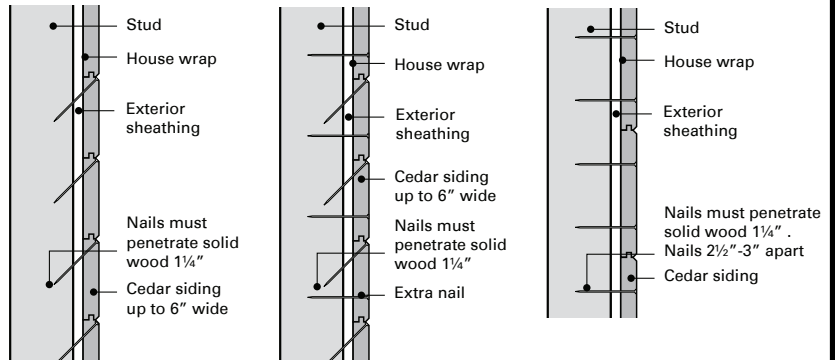
To cover 100 square feet of deck:

NOMINAL SIZE (IN.)	LINEAR FEET
1-1/4X4	325
2X4	325
1-1/4X6	211
2X6	211

INSTALLING BEVEL SIDING



INSTALLING TONGUE AND GROOVE

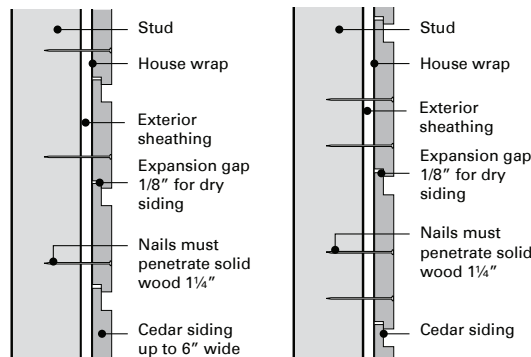


(A) 6" and narrower siding in normal climatic conditions

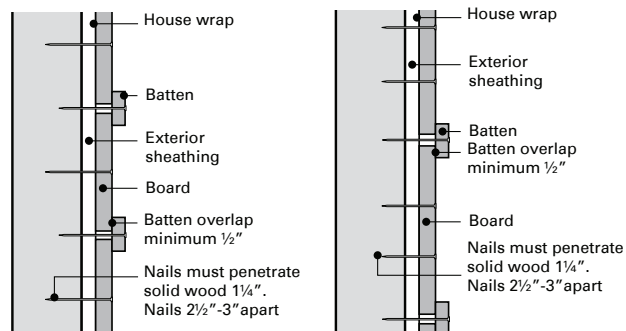
(B) 6" and narrower siding in hot, dry, windy or seacoast climates

(C) 8" and wider siding

INSTALLING LAP SIDINGS



INSTALLING BOARD-AND-BATTEN SIDING



(A) Narrow boards 6"

(B) Wide boards 8" and wider



U.S. L U M B E R

Cedar & Cypress

230 Apple Valley Road | Duncan S.C. 29334 | 800-222-2617

WESTERN RED CEDAR KNOTTY KD SIDING

11/16X8, 3/4X10 Select Knotty Bevel KD
5/4X8 Select Knotty Rabbeted Bevel KD
1X8, 1X10 Select Knotty Channel Rustic
1X4, 1X6, 1X8 Select Knotty T&G VJT rev. KD
1X6 Select Knotty Shiplap KD (RGH Face)
2X6 #2&Btr T&G

WESTERN RED CEDAR KNOTTY BOARDS

1X2-1X12 Select Knotty S1S2E Grn
5/4X4-5/4X8 Select Knotty S1S2E Grn
1X4-1X12 Electric Blue S1S2E 7/8" KD
1X4-1X12 100% Select Knotty S1S2E 3/4" KD

WESTERN RED CEDAR DIMENSION

2X2, 2X4-2X8 Appearance Knotty S4S KD
2X10, 2X12 Appearance Knotty S4S Grn
2X4-2X12 Appearance RGH

WESTERN RED CEDAR FINISH

1X4 - 1X12 Clear VG S4S KD
2X4 - 2X12 Clear VG S4S KD
1X6 C&Btr T&G VJT KD rev.

WESTERN RED CEDAR TIMBERS

4X4, 4X6, 4X8, 4X12 Appearance RGH
6X6, 6X6, 6X8, 6X10, 6X12 Appearance RGH
8X8, 10X10, 12X12 Appearance RGH
4X4, 6X6 Appearance S4S

WESTERN RED CEDAR SHAKES/SHINGLES

#1 18" Perfection shingles KD
#2 18" Perfection shingles
#2 18" Perfection shingles CCA
#1 18" R&R shingles
#1 18" Grooved Shingles
Medium and Heavy 24" shakes
Medium and Heavy 24" shakes CCA
Medium and Heavy 24" shakes CCA Bureau label
5/8 24" Tapersawn H&R
5/8 24" Tapersawn H&R CCA
Cedar Breather

CYPRESS BOARDS AND PATTERNS

1X4-1X12 #2 S1S2E 3/4" KD
1X6 #2 Shiplap 3/4" KD (Rgh Face)
1X6 #2 T&G VJT 3/4" KD (Rgh Face)
1X6 #2 E&CB W/V-back 3/4" KD (Smooth Face)
1X8 #2 Bevel Siding
2X4, 2X6 #2 S1S2E KD

We also have many special order options available in Cedar and Cypress.