



U.S. LUMBER

# Quick Reference Guide

## LUMBER FOOTAGE CONVERSION TABLE

To convert board footage to lineal footage, take the board footage and multiply it by the corresponding factors below

ITEM	LINEAR FOOTAGE FACTOR	ITEM	LINEAR FOOTAGE FACTOR	ITEM	LINEAR FOOTAGE FACTOR
1X2	.1667	2X6	1.000	4X12	4.000
1X4	.3333	2X8	1.333		
1X6	.5000	2X10	1.667	6X6	3.000
1X8	.6667	2X12	2.000	6X8	4.000
1X10	.8333			6X10	5.000
1X12	1.000	3X3	.7500	6X12	6.000
		3X4	1.000		
5/4X4	.4167	3X6	1.500	8X8	5.333
5/4X5	.5208	3X8	2.000	8X10	6.667
5/4X6	.6250	3X10	2.500	8X12	8.000
5/4X8	.8333	3X12	3.000		
5/4X10	1.0417			10X10	8.333
5/4X12	1.250	4X4	1.333	10X12	10.00
		4X6	2.000		
2X2	.3333	4X8	2.667	12X12	12.00
2X4	.6667	4X10	3.333		

## PATTERN COVERAGE ESTIMATING TABLE

Determine the amount of material needed for the basic types of wood siding by multiplying square footage to be covered by the lineal foot factor

PATTERN	NOMINAL WIDTH	WIDTH		FACTOR FOR LINEAL FEET <sup>1</sup>	FACTOR FOR BOARD FEET <sup>2</sup>
		DRESSED	EXPOSED FACE		
BEVEL & BUNGALOW	4	3 1/2	2 1/2	4.8	1.60
	6	5 1/2	4 1/2	2.67	1.33
	8	7 1/4	6 1/4	1.92	1.28
	10	9 1/4	8 1/4	1.45	1.21
DROP, T&G & CHANNEL RUSTIC	4	3 3/8	3 1/8	3.84	1.28
	6	5 3/8	5 1/8	2.34	1.17
	8	7 1/8	6 7/8	1.75	1.16
	10	9 1/8	8 7/8	1.35	1.13

<sup>1</sup> Lineal Foot Factor is derived by dividing 12" by the exposed face width.  
<sup>2</sup> Board Foot Factor is derived by dividing the nominal width by the exposed face width and is based on nominal 1" stock, except log cabin. Log cabin is based on 2" thickness. For nominal 1" stock, except log cabin. Log cabin is based on 2" thickness. For nominal 1 1/2" log cabin, multiply by .75.

Note: Factors do not include any allowance for trim or waste and do not apply to diagonal installations. A 10% allowance (for trim and waste) should be added to the square footage required before the factors are used.

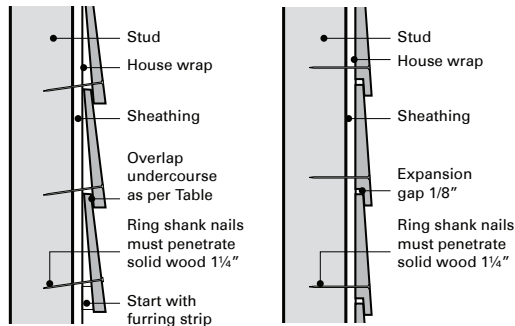
## DECK COVERAGE ESTIMATING TABLE

To help figure the amount of decking needed for a project, use the following linear footage calculator.

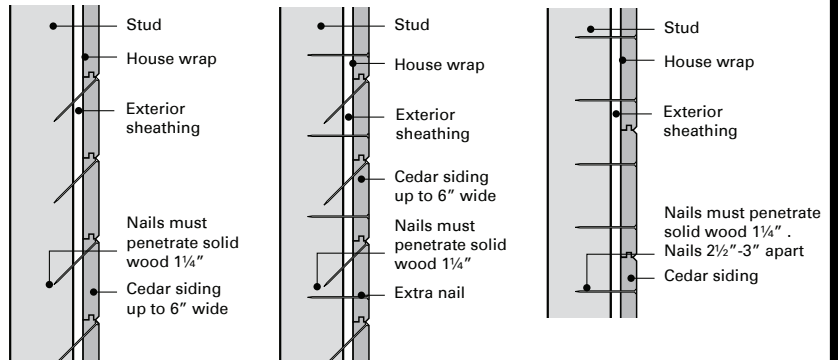
To cover 100 square feet of deck:

NOMINAL SIZE (IN.)	LINEAR FEET
1-1/4X4	325
2X4	325
1-1/4X6	211
2X6	211

## INSTALLING BEVEL SIDING



## INSTALLING TONGUE AND GROOVE

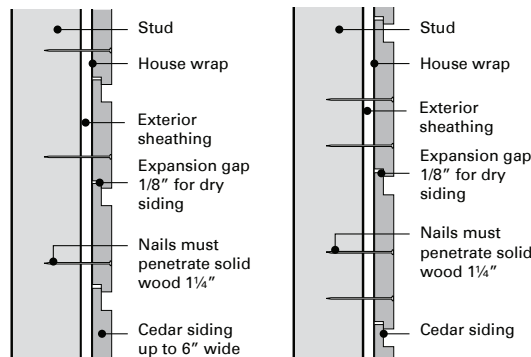


(A) 6" and narrower siding in normal climatic conditions

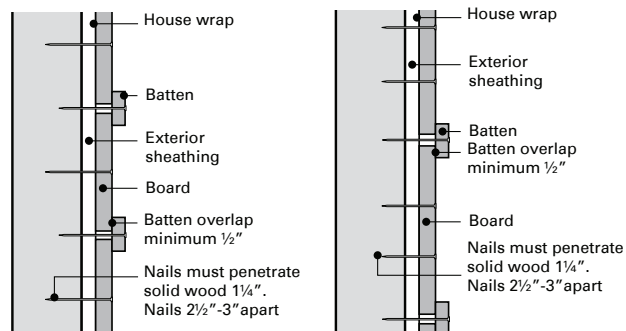
(B) 6" and narrower siding in dry, windy or seacoast climates

(C) 8" and wider siding

## INSTALLING LAP SIDINGS



## INSTALLING BOARD-AND-BATTEN SIDING



(A) Narrow boards 6"

(B) Wide boards 8" and wider



U.S. L U M B E R

# Boston Cedar Stock List

80 Hampden Road | Mansfield, MA 02048 | 800-222-6255

## WESTERN RED CEDAR KNOTTY KD PATTERN

1X4, 1X6 Select Knotty T&G VJT rev.  
1X8 Select Knotty Channel Rustic

## WESTERN RED CEDAR KNOTTY KD BOARDS

1X4-1X12 Select Knotty S1S2E 3/4" KD Terminal  
1X4-1X12 Electric Blue S1S2E 7/8" KD

## WESTERN RED CEDAR KNOTTY DIMENSION

2X4-2X8 Appearance Knotty S4S KD  
5/4X6 Select Knotty Decking KD  
4X4 Appearance Knotty S4S Eased Edge

## WESTERN RED CEDAR CLEAR PATTERN

1X4 Clear VG T&G CM  
1X4 Clear VG T&G V4E  
1X6 Clear VG T&G CM  
1X6 Clear VG T&G V4E  
1X8 Clear VG T&G V4E

## WESTERN RED CEDAR C&BTR

2X2 3' A&BTR S4S KD  
2X2 8' C&BTR S4S KD  
2X4 C&BTR S4S KD  
2X6 C&BTR S4S KD  
2X6-2X10 C&BTR S4S Grn

## WESTERN RED CEDAR TIMBERS

4X4 8-12' A&BTR S4S EE  
6X6 #2Clear&BTR S4S EE

## WESTERN RED CDAR COWICHAN GOLD BOARDS AND DIMENSION

1X4-1X12 Clear VG S4S KD  
1X4-1X12 Clear VG S1S2E KD  
5/4X4-5/4X12 Clear VG S4S KD  
5/4X4-5/4X12 Clear VG S1S2E KD  
2X4-2X12 Clear VG S4S

## WESTERN RED CEDAR CLEAR BEVEL SIDING SOLID

1/2X4 CVG Bevel Siding KD 3' & longer  
1/2X6 CVG Bevel Siding KD 6' & longer  
1/2X6 CVG Bevel Siding Primed KD 6' & longer  
1/2X6 Rustic Bevel Siding Primed KD 3' & longer  
1/2X6 A&BTR Bevel Siding KD 6' & longer  
1/2X8 CVG Bevel Siding KD 6' & longer  
1/2X8 CVG Bevel Siding Primed KD 6' & longer  
3/4X10 CVG Bevel Siding KD 3' & longer  
3/4X10 CVG Bevel Siding Primed KD 3' & longer  
3/4X10 Rustic Bevel Siding KD 3' & longer

## WESTERN RED CEDAR CLEAR BEVEL SIDING FINGERJOINT

1/2X6 CVG Bevel Siding FJ 16' KD  
1/2X6 CVG Bevel Siding FJ Primed 16' Bevel in a Box KD  
1/2X6 CVG Bevel Siding FJ Primed 16' Cedarside KD  
1/2X6 CVG Bevel Siding FJ Primed with Trims KD  
1/2X6 CVG Bevel Siding FJ Primed 8' & 12' KD  
1/2X6 Rustic Bevel Siding FJ Primed KD  
1/2X6 Finish Grade Bevel Siding FJ Primed 16'  
1/2X8 CVG Bevel Siding FJ Primed 3'-15' KD  
1/2X8 CVG Bevel Siding FJ Primed with Trims KD  
3/4X10 CVG Bevel Siding FJ Primed with Trims KD