



U.S. LUMBER

Cedar Quick Reference Guide

LUMBER FOOTAGE CONVERSION TABLE

To convert board footage to lineal footage, take the board footage and multiply it by the corresponding factors below

ITEM	LINEAR FOOTAGE FACTOR	ITEM	LINEAR FOOTAGE FACTOR	ITEM	LINEAR FOOTAGE FACTOR
1X2	.1667	2X6	1.000	4X12	4.000
1X4	.3333	2X8	1.333		
1X6	.5000	2X10	1.667	6X6	3.000
1X8	.6667	2X12	2.000	6X8	4.000
1X10	.8333			6X10	5.000
1X12	1.000	3X3	.7500	6X12	6.000
		3X4	1.000		
5/4X4	.4167	3X6	1.500	8X8	5.333
5/4X5	.5208	3X8	2.000	8X10	6.667
5/4X6	.6250	3X10	2.500	8X12	8.000
5/4X8	.8333	3X12	3.000		
5/4X10	1.0417			10X10	8.333
5/4X12	1.250	4X4	1.333	10X12	10.00
		4X6	2.000		
2X2	.3333	4X8	2.667	12X12	12.00
2X4	.6667	4X10	3.333		

PATTERN COVERAGE ESTIMATING TABLE

Determine the amount of material needed for the basic types of wood siding by multiplying square footage to be covered by the lineal foot factor

PATTERN	NOMINAL WIDTH	WIDTH		FACTOR FOR LINEAL FEET ¹	FACTOR FOR BOARD FEET ²
		DRESSED	EXPOSED FACE		
BEVEL & BUNGALOW	4	3 1/2	2 1/2	4.8	1.60
	6	5 1/2	4 1/2	2.67	1.33
	8	7 1/4	6 1/4	1.92	1.28
	10	9 1/4	8 1/4	1.45	1.21
DROP, T&G & CHANNEL RUSTIC	4	3 3/8	3 1/8	3.84	1.28
	6	5 3/8	5 1/8	2.34	1.17
	8	7 1/8	6 7/8	1.75	1.16
	10	9 1/8	8 7/8	1.35	1.13

¹ Lineal Foot Factor is derived by dividing 12" by the exposed face width.
² Board Foot Factor is derived by dividing the nominal width by the exposed face width and is based on nominal 1" stock, except log cabin. Log cabin is based on 2" thickness. For nominal 1" stock, except log cabin. Log cabin is based on 2" thickness. For nominal 1 1/2" log cabin, multiply by .75.

Note: Factors do not include any allowance for trim or waste and do not apply to diagonal installations. A 10% allowance (for trim and waste) should be added to the square footage required before the factors are used.

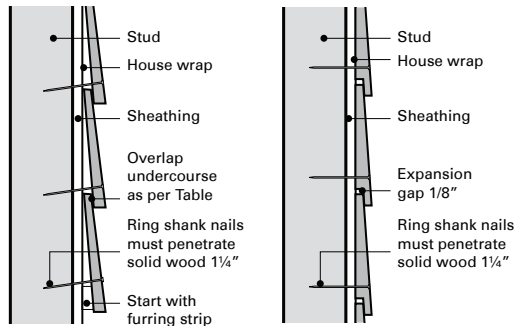
DECK COVERAGE ESTIMATING TABLE

To help figure the amount of decking needed for a project, use the following linear footage calculator.

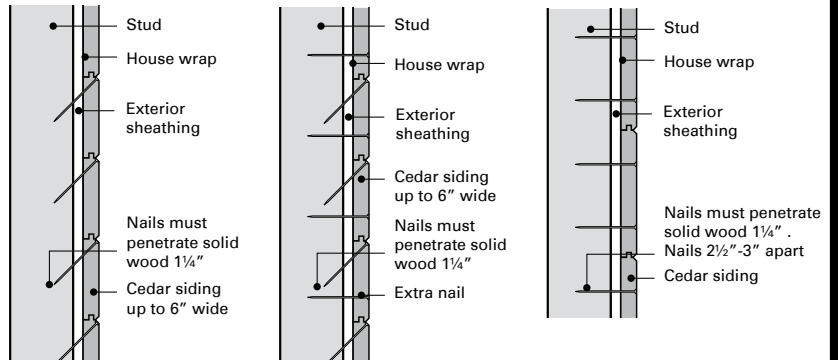
To cover 100 square feet of deck:

NOMINAL SIZE (IN.)	LINEAR FEET
1-1/4X4	325
2X4	325
1-1/4X6	211
2X6	211

INSTALLING BEVEL SIDING



INSTALLING TONGUE AND GROOVE

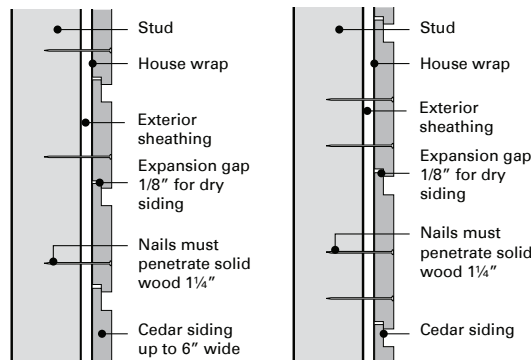


(A) 6" and narrower siding in normal climatic conditions

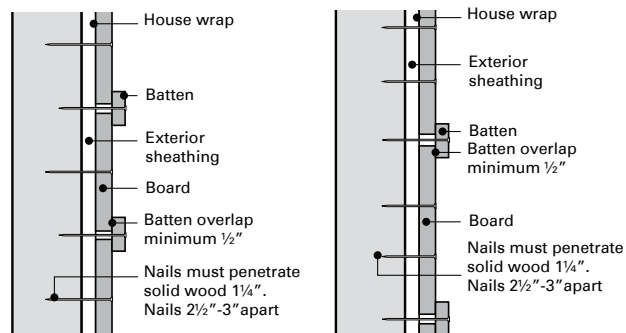
(B) 6" and narrower siding in dry, windy or seacoast climates

(C) 8" and wider siding

INSTALLING LAP SIDINGS



INSTALLING BOARD-AND-BATTEN SIDING



(A) Narrow boards 6"

(B) Wide boards 8" and wider



U.S. L U M B E R

Cedar Quick Reference Guide

Altoona Distribution Center | 218 Ward Drive | Claysburg, PA 16625 | 800-252-3780

WESTERN RED CEDAR KNOTTY SIDING

1 1/16X8 Select Knotty Bevel Siding KD 8-16'

WESTERN RED CEDAR KNOTTY PANELING

1X6 Select Knotty T&G VJT KD reversible 8-16'

1X8 Select Knotty T&G VJT KD reversible 8-16'

WESTERN RED CEDAR KNOTTY BOARDS

1X4 ELECTRIC BLUE 7/8 KD 8-16'

1X6 ELECTRIC BLUE 7/8 KD 8-16'

1X8 ELECTRIC BLUE 7/8 KD 8-16'

1X10 ELECTRIC BLUE 7/8 KD 8-16'

1X12 ELECTRIC BLUE 7/8 KD 8-16'

*We have many special order options
available in Western Red Cedar.*

