



rdi

For home, for life.®

[www.rdirail.com](http://www.rdirail.com)

# 2020

## Product Guide







# Who We Are

## LEADING INNOVATOR

We are the leading innovator in the porch and railing product category with over 20 patents.

## WE MAKE IT SIMPLE

The founders of the RDI brand were carpenters who knew the importance of keeping products “simple stupid”. Whether you’re a skilled craftsman or a “weekend warrior”, our products are simple, and our top-quality instructions complete with illustrations come in every box.

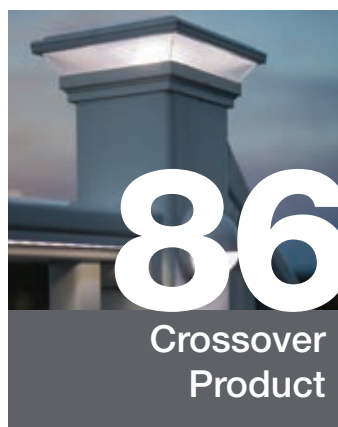
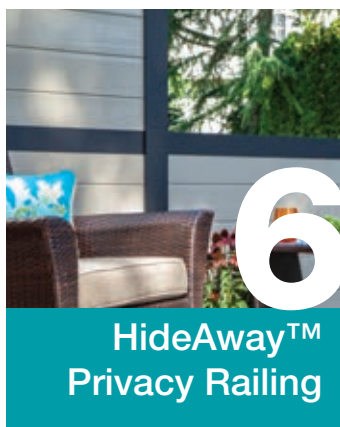
## WE TAKE YOUR SAFETY SERIOUSLY

We design our products for optimum form and function. Sure, our railing looks nice, but it is also a safety product, and we take protecting you very seriously. Our products are designed to meet or exceed the highest safety standards. Code test documents can be viewed on our website at [www.rdirail.com/code](http://www.rdirail.com/code).

## TOP IN CUSTOMER SERVICE

We exist because of you, our Customer, and for that reason we have always made Customer Service our top priority. We are proud to say that our Customers tell us that we are ranked at the top in Customer Service.







# PRIVACY SOLUTIONS



HideAway Privacy Rail in White  
+ Redwood with Titan Pro Rail



HideAway Privacy Rail (2 full, 1 half) in  
Satin Black + Earth with Avalon



HideAway Privacy Rail (2 full, 1 half) in  
White + Birchwood with Avalon in White

**HideAway™ Privacy Railing** provides a code compliant solution for privacy on your deck or patio. Powder-coated rails are strong and durable and infill boards with patented **ClickConnect™** technology lock tightly together for complete privacy. Install at the full height of 6', or create half privacy panels at 36" or 42".

Realistic woodgrain  
patterns!



(See more details on pg. 6)





Black Celtic Decorative Screen Panels, hung



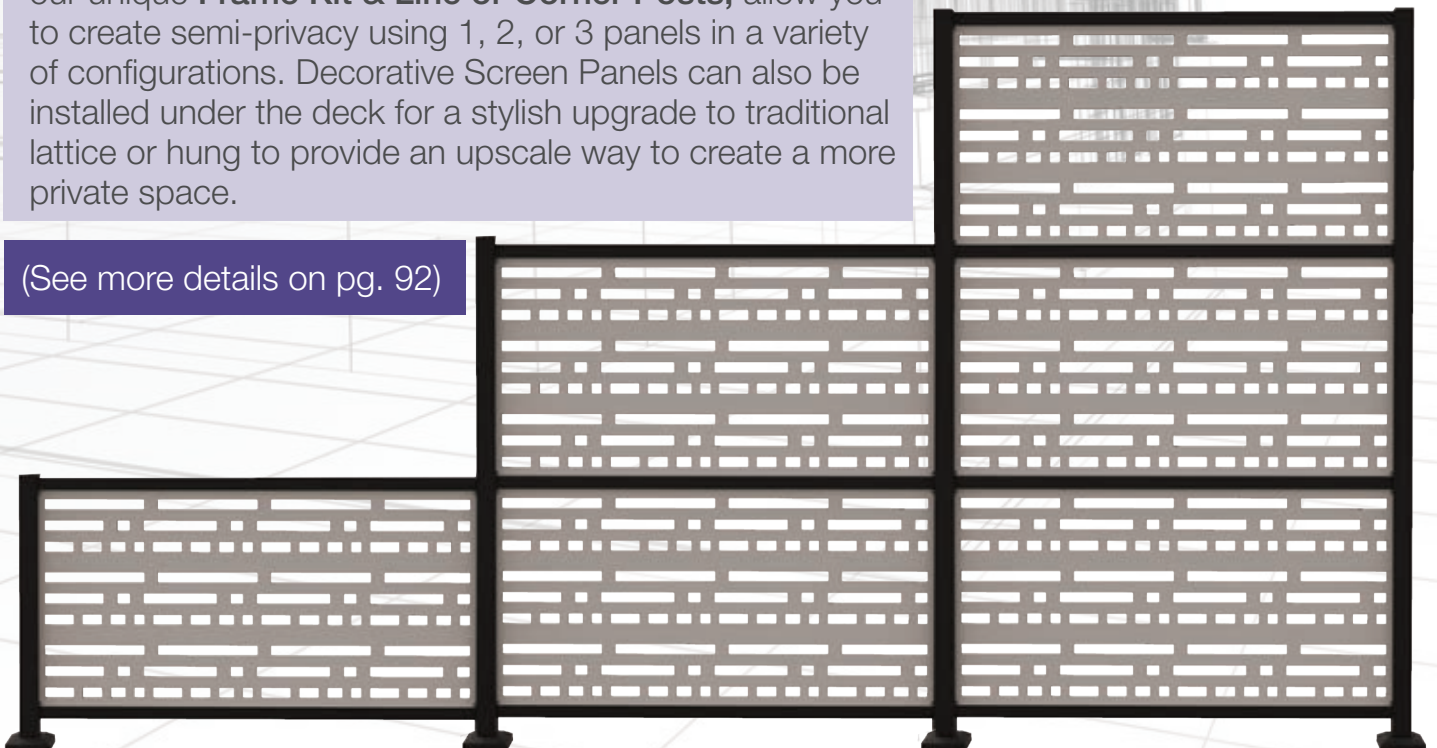
Saddle Morse Decorative Screen Panels in Frame Kits in a 3-2-1 configuration



Brazilian Walnut Sprig Decorative Screen panels hung as a privacy wall.

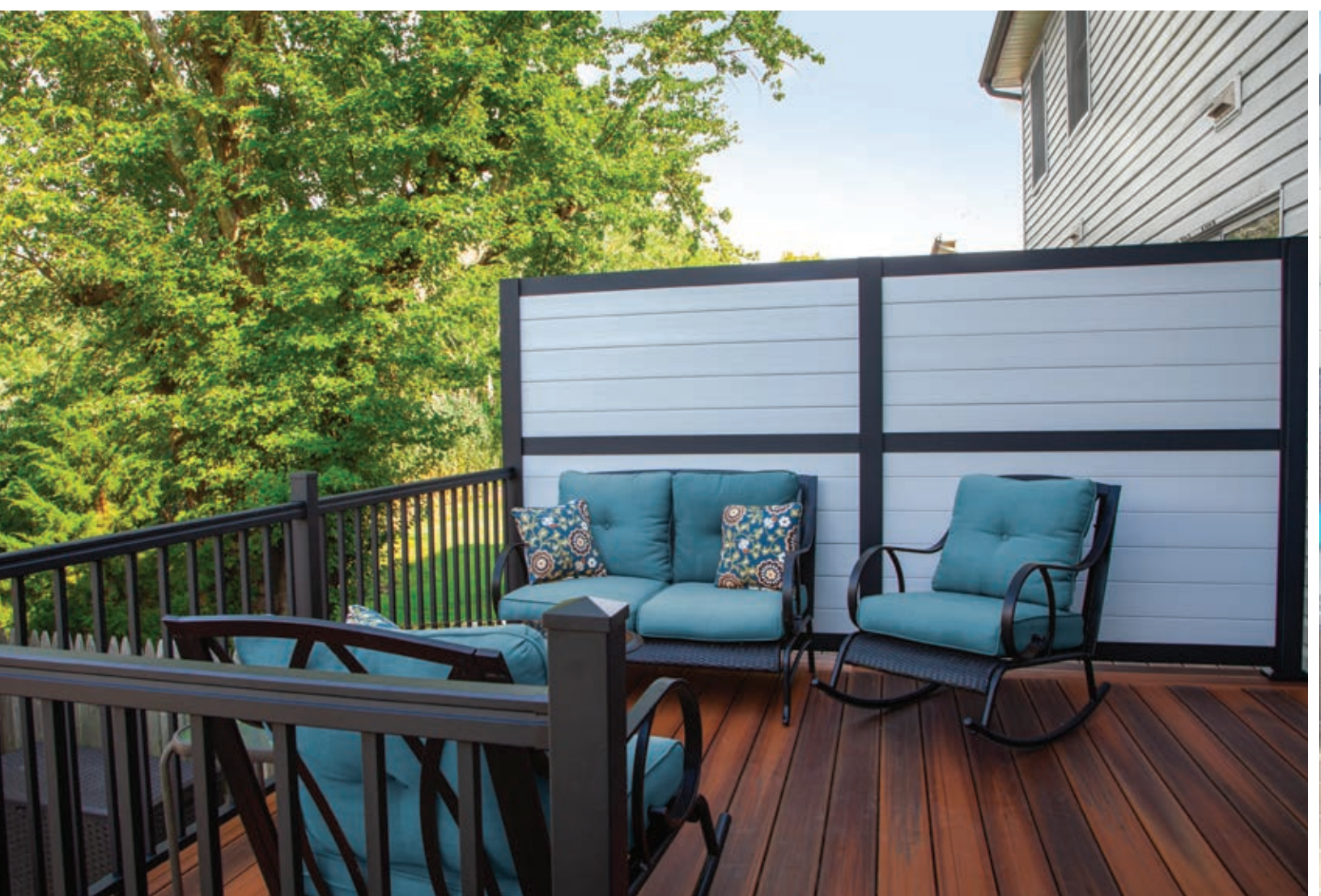
**Decorative Screen Panels**, combined with our unique **Frame Kit & Line** or **Corner Posts**, allow you to create semi-privacy using 1, 2, or 3 panels in a variety of configurations. Decorative Screen Panels can also be installed under the deck for a stylish upgrade to traditional lattice or hung to provide an upscale way to create a more private space.

(See more details on pg. 92)





# PRIVACY RAILING





# HideAway™

## PRIVACY RAILING



**HIDEAWAY™ PRIVACY RAILING** provides a contemporary and modern look to your deck or patio while offering you the option of privacy in your outdoor space. Powder coated aluminum framing provides strength for your installation while a selection of vinyl infill boards lock securely together with our patented ClickConnect™ technology. Designed to meet IBC and IRC, HideAway allows you to create privacy that is safe, secure, and code compliant for decks of any height.





# FEATURE SPOTLIGHT





# HideAway™

## PRIVACY RAILING



1

### STRONG & SECURE

Patented **ClickConnect™** vinyl infill boards lock securely together and fit tightly in post channels. Top, mid, and bottom aluminum rails attach into posts to provide strength and support, making HideAway rail code compliant for use on decks and porches.

2

### VERSATILE POSTS

HideAway privacy panels can be installed as full 6' tall sections for complete privacy using our 72" posts, or as "half privacy" panels with a 36" or 42" finished height. Posts come as end, mid, or corner, and include pre-mounted base plates.

3

### INFILL OPTIONS

Vinyl infill boards come in 4 wood grain color options and 4 solid colors so you can create a high end custom look that also provides you privacy.

4

### EXCEPTIONAL STRENGTH

Durable powder-coated aluminum is AAMA certified and rust proof. And with 10,000 hours of salt-spray testing (used to accelerate corrosion performance of a coating system), HideAway posts & rails perform at more than 3 times the industry standard of 3,000 hours!

*The HideAway Railing System exceeds U.S. building code requirements. Always consult your local Building Code Department for applicable regulations and product acceptance. For additional information on HideAway or other RDI products visit [www.rdirail.com](http://www.rdirail.com) or contact our Customer Service Department at (877) 420-7245.*



# HOW TO ORDER

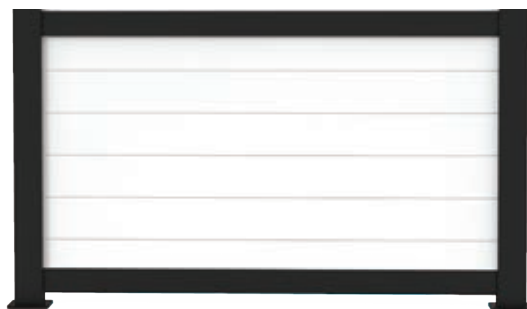
1

## SELECT YOUR RAIL KIT OPTIONS

HideAway™ Privacy Railing kits are available in full privacy or half privacy giving you the flexibility to design the perfect solution for your desired level of privacy. Kits come in Satin Black or White.



Full Privacy Panel



Half Privacy Panel

Full Privacy Rail Kits include top and bottom rails, and mid rail. Half privacy kits include top and bottom rail

2

## CHOOSE YOUR POSTS

HideAway Privacy Railing offers posts in end, mid, and corner configurations in both Satin Black and White. A post is needed at each end of your HideAway rail panels. End posts can also be used to transition from privacy to our vinyl or aluminum railing. 42" posts can be used for half privacy sections 36" or 42", and 72" posts are used for full privacy sections.



2" x 4" End Post



2" x 4" Mid Post



3.3" x 3.3" Corner Post

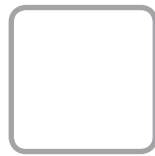
Posts come with pre-mounted base plates, 2-piece trim rings, infill board adapters, post hardware covers, channel cover, and flat caps.



3

### CHOOSE YOUR BOARDS

Select your infill boards (pack of 6) in 8 different colors to complete your privacy solution! Infill boards lock securely together with our ClickConnect™ technology and fit snugly into the infill adapter channels in posts. Boards measure 66" long to create a 6' wide privacy panel from one end of the post to the other, with 64" of board visible inside of post to inside of post. Boards can be cut to create shorter spans of privacy rail.



White



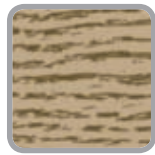
Earth



Dune



Gray



Birchwood



Redwood



Saddlewood



Driftwood

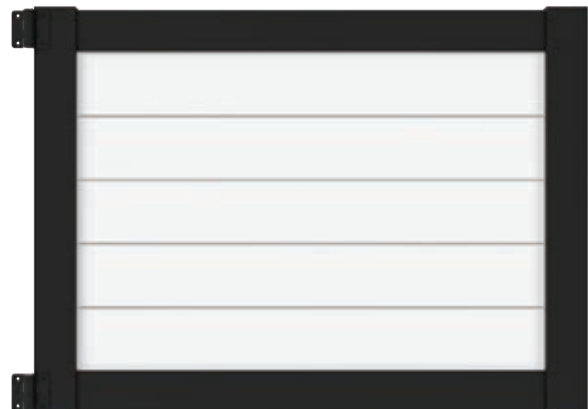
4

### COMPLETE YOUR INSTALL WITH A GATE KIT

Gate kits are available in 36", 42", and 72" heights, with widths up to 48". Gate kits include uprights, infill board adapters, top and bottom rails, and gate hinges; latch sold separately. Purchase your infill boards separately. Cut top and bottom rails and infill boards to desired width for your gate.



Full Privacy Gate (72")



Half Privacy Gate (36" or 42")



# SKU LIST

## 1 HIDEAWAY PRIVACY RAILING – RAIL KITS

| DESCRIPTION   | WHITE           | SATIN BLACK     |
|---|-----------------|-----------------|
| 6' Full Privacy Rail Kit (Includes top rail, bottom rail, and mid rail) | <b>73042844</b> | <b>73042828</b> |
| 6' Half Privacy Rail Kit (Includes top rail and bottom rail)            | <b>73042845</b> | <b>73042827</b> |

*Infill boards sold separately. Full privacy panel requires 11 infill boards, half privacy requires 5 for 36" finished height or 6 for 42" finished height. An installed section using 2 end posts measures a finished width of 6'. If advanced wind load (check local codes) requirements are necessary, then full privacy railing (6' tall) must have post spacing every 3'.*

## 2 HIDEAWAY PRIVACY RAILING – POSTS

| DESCRIPTION                                   | WHITE           | SATIN BLACK     |
|---|-----------------|-----------------|
| 2" x 4" x 42" End Post – Surface Mount        | <b>73042839</b> | <b>73042834</b> |
| 2" x 4" x 42" Mid Post – Surface Mount        | <b>73042840</b> | <b>73042832</b> |
| 3.3" x 3.3" x 42" Corner Post – Surface Mount | <b>73042838</b> | <b>73042833</b> |
| 2" x 4" x 72" End Post – Surface Mount        | <b>73042842</b> | <b>73042837</b> |
| 2" x 4" x 72" Mid Post – Surface Mount        | <b>73042843</b> | <b>73042835</b> |
| 3.3" x 3.3" 72" Corner Post – Surface Mount   | <b>73042841</b> | <b>73042836</b> |

*42" posts are used for half privacy panels for 42" height railing, or for a finished railing height of 36" (42" post can be cut down to for 36" rail height). 72" posts are used for full privacy sections.*

| INCLUDED WITH POSTS                    | END POST | MID POST | CORNER POST |
|--|----------|----------|-------------|
| Post with pre-mounted base plate       | 1        | 1        | 1           |
| Flat post cap                          | 1        | 1        | 1           |
| 2-piece trim ring                      | 1        | 1        | 1           |
| Infill adapter channels – 27"          | 1        | 2        | 2           |
| Infill adapter channels – 31 5/16"     | 1        | 2        | 2           |
| Post hardware cover                    | 1        | 1        | 2           |
| 36" channel cover**                    | N/A      | 1        | 1           |
| Hardware pack (Includes 2 vinyl shims) | 1        | 1        | 1           |

*\*42" posts do not include 27" infill adapter channels.*

*\*\* 36" channel cover included in 72" posts only for a finished look transitioning from full to half privacy.*



### 3 HIDEAWAY PRIVACY RAILING – INFILL BOARDS

| DESCRIPTION  | SKU      |
|--|----------|
| 6" x 66" Vinyl Interlocking Boards for 6' Width – Pack of 6 – WHITE      | 73042846 |
| 6" x 66" Vinyl Interlocking Boards for 6' Width – Pack of 6 – EARTH      | 73043492 |
| 6" x 66" Vinyl Interlocking Boards for 6' Width – Pack of 6 – DUNE       | 73043491 |
| 6" x 66" Vinyl Interlocking Boards for 6' Width – Pack of 6 – GRAY       | 73044977 |
| 6" x 66" Vinyl Interlocking Boards for 6' Width – Pack of 6 – BIRCHWOOD  | 73042831 |
| 6" x 66" Vinyl Interlocking Boards for 6' Width – Pack of 6 – REDWOOD    | 73042830 |
| 6" x 66" Vinyl Interlocking Boards for 6' Width – Pack of 6 – SADDLEWOOD | 73042829 |
| 6" x 66" Vinyl Interlocking Boards for 6' Width – Pack of 6 – DRIFTWOOD  | 73044978 |

### 4 HIDEAWAY PRIVACY RAILING – GATE KITS

| DESCRIPTION                               | WHITE    | SATIN BLACK |
|---|----------|-------------|
| 36" Height Gate Kit for Widths 36" – 48"  | 73044982 | 73044979    |
| 42" Height Gate Kit for Widths 36" – 48"  | 73045453 | 73044980    |
| 72" Height Gate Kit for Widths 36" – 48"  | 73045454 | 73044981    |
| Boerboel® Gravity Latch                   | 73025491 | 73028060    |
| Boerboel® GarDog™ Locking Latch Two Sided | 73025501 | 73024418    |

Gate kits include uprights, top and bottom rails, and gate hinges. 36" and 42" gate kits include compact butterfly hinges and 72" gate kit includes heavy duty hinges, color matched to gate. Purchase your gate latch separately. Infill boards sold separately; 5 boards needed for 36" high gate kits, 6 boards needed for 42" high gate kits, and 11 boards needed for 72" high gate kits. Boards and rails must be cut to desired width for finished gate width (36" – 48").



# CUSTOMIZE YOUR STYLE



## transform<sup>®</sup> + AVALON

- 1 Select your Transform post sleeve, post top, and trim ring options (4 color choices).

Transform – page 22

- 2 Select your Avalon panel or glass beam kit and glass slats (3 color choices).

Avalon – page 33

- 3 Install Avalon with the Tristan Top Rail option.

Avalon – page 34

- 4 Select from 4 Transform top rails which install right onto the Tristan (4 color choices).

Transform – page 24

- 5 Add ambience with Transform LED post caps, Transform side or dome lights, or under-rail lighting.

Transform – page 25





## transform<sup>®</sup> + EXCALIBUR

- 1** Select your Transform post sleeve, post top, and trim ring options (4 color choices).  
Transform – page 22
- 2** Select your Excalibur panel (2 colors choices & 3 panel styles).  
Excalibur – page 44
- 3** Install the Excalibur adaptor piece on the top of the panel.  
Transform – page 25
- 4** Select from 4 Transform top rails which install right onto the adaptor (4 color choices).  
Transform – page 24
- 5** Add ambience with Transform LED post caps, Transform side or dome lights, or under-rail lighting.  
Transform – page 25





# COMPOSITE RAILING



Transform®, made from RDI's resin based, state-of-the-art Resalite® core contains no wood! Transform has the elements that you want in a wood railing – the weight, look, and feel of wood, and nothing that you don't. Transform will not absorb water so it won't rot and it resists weathering, discoloration, and sagging. Transform's 100% acrylic exterior surface provides long lasting color and a lightly textured, low-maintenance durable finish.









# FEATURE SPOTLIGHT







Satin White

Wheat

Caramel

Ironstone

3

1

#### STATE-OF-THE-ART RESALITE® CORE WITH ACRYLIC CAP

An industry first, ultra low-maintenance acrylic surface provides a satin, wood-like appearance and superior color pigment retention, for gorgeous, lasting color and fade-resistance. Unlike Wood Plastic Composites (WPCs), Resalite contains no wood or organic fibers. Weather resistant and strong, Resalite won't absorb water or rot and resists discoloration, fading, and sagging.

2

#### SIMPLE LEVEL AND STAIR BALUSTER ATTACHMENT

Transform balusters attach quickly and easily with mounting adapters, saving time by eliminating the need for tedious nailing or screwing each baluster into the railing. This innovative baluster adapter works in level and stair rail configurations.

3

#### UNIQUE HIDDEN BRACKET DESIGN

Brackets are completely concealed within the rail structure, providing a clean finished look. One bracket is used for all applications: use bracket as-is for level sections or cut to desired angle for stair and angled installations.

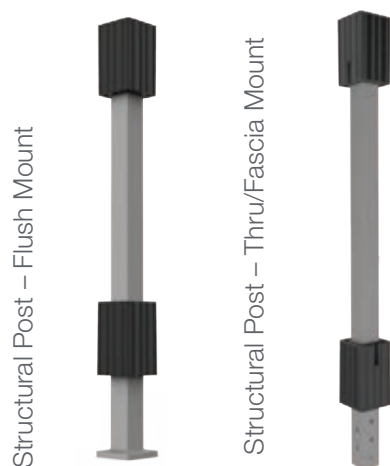
*The Transform Railing System exceeds U.S. building code requirements. Always consult your local Building Code Department for applicable regulations and product acceptance. For additional information on Transform or other RDI products visit [www.rdirail.com](http://www.rdirail.com) or contact our Customer Service Department at (877) 420-7245.*



# HOW TO ORDER

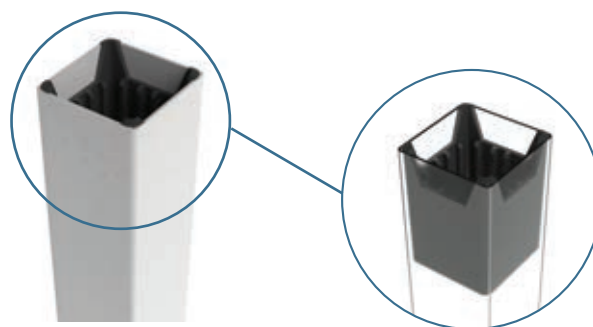
## SELECT A POST (IF YOUR INSTALLATION REQUIRES A STRUCTURAL POST)

### 1a CHOOSE A STRUCTURAL POST



- Available for 36" and 42" heights.

### 1b CHOOSE A POST SLEEVE



- 39", 54", and 120" lengths available.
- Each post sleeve comes with 2 post inserts; can also be purchased separately for use when cutting down 120" post sleeve.

## 2 SELECT YOUR POST ACCESSORY & LIGHTING OPTIONS IN MATCHING OR COMPLEMENTARY COLORS



Pinnacle Post Cap



Pinnacle LED Cap



Zenith Post Cap



Zenith LED Cap



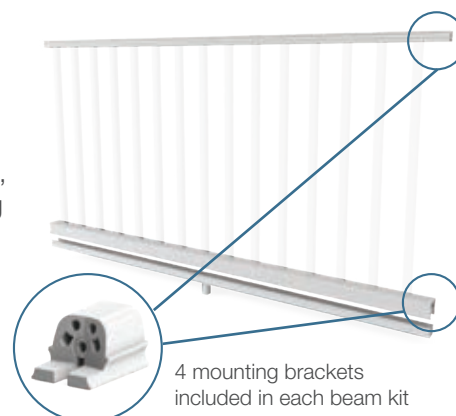
Trim Ring

### 3a SELECT YOUR RAIL KIT

- Rail kits include bottom beam, bottom rail, top beam, mounting brackets, mounting hardware, support foot (1 for 6', 2 for 8') and balusters. Available in Satin White only, with square balusters. **If purchasing a full rail kit, skip to Step 5.**

### 3b SELECT YOUR BEAM KIT

- 6' or 8' (true length).
- Can be used for level or stair applications.
- Beam kits include bottom beam, bottom rail, top beam, mounting brackets, mounting screws, support foot.
- Purchase a square/round baluster beam kit or a cable rail beam kit.



4 mounting brackets included in each beam kit

## 4 SELECT YOUR LEVEL OR STAIR BALUSTERS

1 1/8" Square (color of your choice)



- For finished rail heights of 36" & 42".
- Square balusters include baluster plugs.
- Square stair balusters are cut on a 32° angle.

3/4" Black Round Aluminum



- For finished rail heights of 36" & 42".
- Baluster shoes sold separately, in boxes of 20.
- Stair baluster shoes are designed for stair angles 32-38°.

Cable Rail Infill



- MUST be installed with wooden 4" x 4" post.
- Purchase your beam kit, cable and fittings.
- Can be used for level and stair application.
- Bottom beam optional – with bottom beam one less pair of fittings would be used.

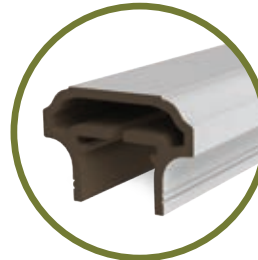
## 5 SELECT YOUR TOP RAIL



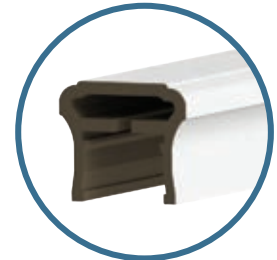
PRESENCE



EMERGE



ASPIRE



GRASPABLE STAIR

## 6 SELECT YOUR GATE KIT OPTION

- 36" & 42" heights, width no wider than 48".
- Purchase rail section and top rail separately - cannot be used with cable rail.
- Gate Kit includes 2 uprights, Boerboel® hardware (2 hinges, 1 latch) and cross braces.



## 7 SELECT YOUR LED ACCESSORIES

Choose from a variety of LED lighting options with easy plug and play installation including under-rail lighting, dome & side lights, all available in Transform's 4 color choices.





# SKU LIST

| 1a TRANSFORM – STRUCTURAL POSTS        |             |              |
|--|-------------|--------------|
| DESCRIPTION                            | FLUSH MOUNT | FASCIA MOUNT |
| Structural Post for 36" Railing Height | 73019022    | 73019023     |
| Structural Post for 42" Railing Height | 73019024    | 73019025     |
| 5" x 5" Post Inserts*                  | 73019139    |              |

| 1b TRANSFORM – POST SLEEVES         |             |          |          |           |
|-------------------------------------|-------------|----------|----------|-----------|
| DESCRIPTION                         | SATIN WHITE | CARAMEL  | WHEAT    | IRONSTONE |
| 5" x 5" x 39" Post Sleeve – Bagged  | 73019140    | N/A      | N/A      | N/A       |
| 5" x 5" x 54" Post Sleeve – Bagged  | 73019078    | N/A      | N/A      | N/A       |
| 5" x 5" x 120" Post Sleeve – Bagged | 73014639    | N/A      | N/A      | N/A       |
| 5" x 5" x 39" Post Sleeve – Boxed   | 73014245    | 73019143 | 73019142 | 73019141  |
| 5" x 5" x 54" Post Sleeve – Boxed   | 73014244    | 73014637 | 73019079 | 73014638  |
| 5" x 5" x 120" Post Sleeve – Boxed  | 73014246    | 73014641 | 73014640 | 73014642  |

\*Post sleeves come with two 5" x 5" post inserts; more can be purchased for use when sleeving 4" x 4" wooden posts with the 120" post sleeve cut to size.

| 2 TRANSFORM – POST CAPS & TRIM RINGS  |             |          |          |           |
|---------------------------------------|-------------|----------|----------|-----------|
| DESCRIPTION                           | SATIN WHITE | CARAMEL  | WHEAT    | IRONSTONE |
| 5" x 5" Pinnacle Post Cap             | 73019127    | 73019130 | 73019129 | 73019128  |
| 5" x 5" Pinnacle LED Post Cap (0.80W) | 73019361    | 73019364 | 73019363 | 73019362  |
| 5" x 5" Zenith Post Cap               | 73004495    | 73004492 | 73004494 | 73004493  |
| 5" x 5" Zenith LED Post Cap (0.80W)   | 73019365    | 73019368 | 73019367 | 73019366  |
| 5" x 5" Trim Ring                     | 73019038    | 73014643 | 73019040 | 73019039  |

3a

### TRANSFORM – RAIL KITS (TOP RAIL SOLD SEPARATELY)

| DESCRIPTION                                   | SATIN WHITE |
|---|-------------|
| 6' x 36" Level Rail Kit with Square Balusters | 73019032    |
| 8' x 36" Level Rail Kit with Square Balusters | 73019033    |
| 6' x 42" Level Rail Kit with Square Balusters | 73019035    |
| 8' x 42" Level Rail Kit with Square Balusters | 73019036    |
| 6' x 36" Stair Rail Kit with Square Balusters | 73019034    |
| 6' x 42" Stair Rail Kit with Square Balusters | 73019037    |

| INCLUDED IN RAIL KITS                          | 6' LEVEL | 8' LEVEL | 6' STAIR |
|--|----------|----------|----------|
| 1" Beveled Balusters (Includes baluster plugs) | 15       | 20       | 15       |
| Top Beam                                       | 1        | 1        | 1        |
| Bottom Beam                                    | 1        | 1        | 1        |
| Bottom Rail                                    | 1        | 1        | 1        |
| Brackets                                       | 4        | 4        | 4        |
| Support Foot                                   | 1        | 2        | 1        |
| Installation Instructions & Hardware Pack      | 1        | 1        | 1        |

3b

### TRANSFORM – BEAM KITS (FOR LEVEL OR STAIR)

| DESCRIPTION                               | SATIN WHITE | CARAMEL  | WHEAT    | IRONSTONE |
|---|-------------|----------|----------|-----------|
| 6' Beam Kit for Square or Round Balusters | 73019061    | 73019063 | 73019065 | 73019067  |
| 8' Beam Kit for Square or Round Balusters | 73019062    | 73019064 | 73019066 | 73019068  |
| 6' Beam Kit for Cable Rail                | 73019347    | 73019353 | 73019349 | 73019351  |
| 8' Beam Kit for Cable Rail                | 73019348    | 73019354 | 73019350 | 73019352  |

Beam kits for cable rail include mid baluster support which is required for installation.

Cable rail must be installed using a 4" x 4" wooden post to support the cable tension. Bottom rail included in beam kits but optional for cable installation.

| INCLUDED IN BEAM KITS                          | 6' KIT | 8' KIT |
|--|--------|--------|
| Top Beam                                       | 1      | 1      |
| Bottom Beam                                    | 1      | 1      |
| Bottom Rail                                    | 1      | 1      |
| Brackets                                       | 4      | 4      |
| Mid Baluster Support (In cable rail kits only) | 1      | 2      |
| Support Foot                                   | 1      | 2      |
| Installation Instructions & Hardware Pack      | 1      | 1      |
| REQUIRED BEAM KITS USING BALUSTERS             | 6' KIT | 8' KIT |
| Square or Round Balusters (Sold separately)    | 15     | 20     |



# SKU LIST

4

## TRANSFORM – 1 1/8" SQUARE BALUSTERS

| DESCRIPTION                           | SATIN WHITE | CARAMEL  | WHEAT    | IRONSTONE |
|---------------------------------------|-------------|----------|----------|-----------|
| 36" Square Baluster – Level – 10 Pack | 73019045    | 73019049 | 73019053 | 73019057  |
| 42" Square Baluster – Level – 10 Pack | 73019046    | 73019050 | 73019054 | 73019058  |
| 36" Square Baluster – Stair – 10 Pack | 73019047    | 73019051 | 73019055 | 73019059  |
| 42" Square Baluster – Stair – 10 Pack | 73019048    | 73019052 | 73019056 | 73019060  |

Stair balusters are cut at an angle of 32°.

4

## TRANSFORM – 3/4" ROUND ALUMINUM BALUSTERS & ACCESSORIES

| DESCRIPTION  | BLACK    |
|--|----------|
| 36" Round Aluminum Baluster – 10 Pack                          | 73019041 |
| 42" Round Aluminum Baluster – 10 Pack                          | 73019042 |
| Aluminum Baluster Shoes – Level – (Box of 20 for 10 balusters) | 73019043 |
| Aluminum Baluster Shoes – Stair – (Box of 20 for 10 balusters) | 73019044 |

Aluminum Baluster Shoes for stair installation are designed to work from 32°-38°.

4

## TRANSFORM – CABLE RAIL INFILL & ACCESSORIES

| DESCRIPTION  | LEVEL    | STAIR    |
|--|----------|----------|
| Cable Fitting for 36" Finished Height Installation – Box of 20 (10 sets of fittings) | 73019357 | 73019358 |
| Cable Fitting for 42" Finished Height Installation – Box of 24 (12 sets of fittings) | 73019359 | 73019399 |
| Cable Wire – 100' Length Spool   | 73019360 |          |
| Cable Wire – 500' Length Spool   | 73019381 |          |
| Cable Release Key  | 73025484 |          |
| E-Z Clean Cable Cleaner + Protectant   | 73040274 |          |

Cable Rail must be installed using a 4" x 4" wooden post to support the cable tension. Bottom rail included in beam kits but optional for cable installation.

5

## TRANSFORM – TOP RAILS

| DESCRIPTION                                  | SATIN WHITE | CARAMEL  | WHEAT    | IRONSTONE |
|--|-------------|----------|----------|-----------|
| 6' Transform Top Rail – Aspire               | 73019069    | 73019075 | 73019071 | 73019073  |
| 8' Transform Top Rail – Aspire               | 73019070    | 73019076 | 73019072 | 73019074  |
| 6' Transform Top Rail – Emerge               | 73019080    | 73019086 | 73019082 | 73019084  |
| 8' Transform Top Rail – Emerge               | 73019081    | 73019087 | 73019083 | 73019085  |
| 6' Transform Top Rail – Presence             | 73019088    | 73019094 | 73019090 | 73019092  |
| 8' Transform Top Rail – Presence             | 73019089    | 73019095 | 73019091 | 73019093  |
| 6' Transform Graspable Top Rail – For Stairs | 73019009    | 73019012 | 73019010 | 73019011  |

For 45 degree angle railing, the Emerge top rail can be cut at 45 degrees and installed. However, if using the Presence or Aspire top rail, the two adjacent rail sections must be cut at 22.5 degrees and installed on posts mounted at 22.5 degrees. Please contact our customer service department for more information.

## 6 TRANSFORM – GATE KITS

| DESCRIPTION  | SATIN WHITE     | CARAMEL         | WHEAT           | IRONSTONE       |
|--------------|-----------------|-----------------|-----------------|-----------------|
| 36" Gate Kit | <b>73019237</b> | <b>73019239</b> | <b>73019238</b> | <b>73019240</b> |
| 42" Gate Kit | <b>73019241</b> | <b>73019243</b> | <b>73019242</b> | <b>73019244</b> |

Gate kits include 2 uprights, 2 cross braces, Boerboel® hardware (2 hinges, 1 latch). Rail section and top rail sold separately. Satin White gate kit includes white cross braces and black hardware, Caramel, Wheat, and Ironstone gate kits include black cross braces and black hardware. Gates cannot exceed 48" in opening width.

## 7 TRANSFORM – LIGHTING ACCESSORIES

| DESCRIPTION                              | SATIN WHITE     | CARAMEL         | WHEAT           | IRONSTONE       |
|--|-----------------|-----------------|-----------------|-----------------|
| 5" x 5" Pinnacle LED Post Cap (0.80W)    | <b>73019361</b> | <b>73019364</b> | <b>73019363</b> | <b>73019362</b> |
| 5" x 5" Zenith LED Post Cap (0.80W)      | <b>73019365</b> | <b>73019368</b> | <b>73019367</b> | <b>73019366</b> |
| Dome Light (0.80W)                       | <b>73019407</b> | <b>73019410</b> | <b>73019408</b> | <b>73019409</b> |
| Stair/Side Light (0.40W)                 | <b>73019414</b> | <b>73019417</b> | <b>73019415</b> | <b>73019416</b> |
| Flush Deck Light (0.40W)                 | <b>73019403</b> |                 |                 |                 |
| LED Under-Rail Lighting (92" strip – 3W) | <b>73019376</b> |                 |                 |                 |
| Bluetooth Transformer for LED Lighting   | <b>73041277</b> |                 |                 |                 |
| Electrical Wire for LED Lighting – 2'    | <b>73032449</b> |                 |                 |                 |
| Electrical Wire for LED Lighting – 5'    | <b>73019375</b> |                 |                 |                 |
| Electrical Wire for LED Lighting – 7'    | <b>73019373</b> |                 |                 |                 |
| Electrical Wire for LED Lighting – 9'    | <b>73019374</b> |                 |                 |                 |
| 2-Way Splitter                           | <b>73019370</b> |                 |                 |                 |
| 5-Way Splitter                           | <b>73019371</b> |                 |                 |                 |

Transformer is 50W and can be used with lighted post caps or under-rail lighting. Includes photocell, built-in dimmer, timer, remote, and is Bluetooth capable. Download the "SmartPower50" app from the iTunes or Android store to control your lighting via your smartphone.

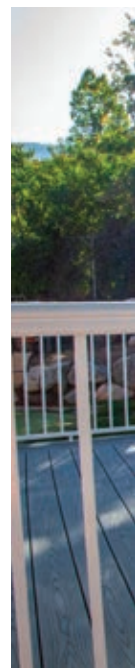
## 8 TRANSFORM – EXTRA ACCESSORIES

| DESCRIPTION  |                 |
|--|-----------------|
| Transform Brackets – Set of 4  | <b>73019126</b> |
| Transform Baluster Plugs for 1 1/8" Square Balusters – Bag of 20                               | <b>73019232</b> |
| 96" Aspire/Presence Top Rail IBC Stiffener – Box of 4*   | <b>73019002</b> |
| 96" Emerge Top Rail IBC Stiffener – Box of 4*  | <b>73019003</b> |
| 72" Transform Top Rail Adapter for mix'n'match with RDI Metal Works® Excalibur® (2 + hardware) | <b>73019235</b> |
| 96" Transform Top Rail Adapter for mix'n'match with RDI Metal Works® Excalibur® (2 + hardware) | <b>73019236</b> |

\* For commercial railing heights of 42" with lengths over 91", the IBC stiffener is required for code compliancy.



# ALUMINUM RAILING



**AVALON ALUMINUM RAILING®** comes in rust resistant, sleek aluminum construction. Unique style options combine form, function and versatility to add a rich, stylish look to your home while adding safety and security at the same time. Choose traditional square baluster rail panels, or for a truly high end look, try glass slats for your infill.









# FEATURE SPOTLIGHT



White

Satin Black

Aged Bronze

4

1

#### INTERCHANGEABLE TOP RAILS

Choose the top rail that matches your style, from traditional to contemporary. Top rails install quickly and easily and come in 3 different styles and 3 colors.

2

#### INFILL OPTIONS

Avalon rail panels with square balusters come pre-assembled for ease of install. If you're looking for something more, try Avalon with glass slats. Glass slats open up your view from your deck without compromising your safety.

3

#### EXCEPTIONAL STRENGTH

Durable powder-coated aluminum is AAMA certified and rust proof. And with 10,000 hours of salt-spray testing (used to accelerate corrosion performance of a coating system), Avalon performs at more than 3 times the industry standard of 3,000 hours! It exceeds most all commercial and residential codes\* and is supported with a limited lifetime warranty.

4

#### SECURATEC<sup>®</sup> LOCKING STRIP

Innovative locking strip, pre-installed into the top and bottom rails, locks in balusters for a secure fit and eliminates rattling.

\*Avalon Aluminum Railing exceeds U.S. building code requirements. Always consult your local Building Code Department for applicable regulations and product acceptance. For additional information on Avalon visit [www.rdirail.com](http://www.rdirail.com) or contact our Customer Service Department at (877) 420-7245.



# HOW TO ORDER

1

## SELECT YOUR POSTS

Posts are available in 3 heights for residential use and 2 heights for commercial application (heavy duty posts) – Step 1a.

Avalon can also be installed using an over-the-top application. Select which end, corner, or mid posts your over-the-top installation requires (step 1b), and purchase the corresponding post mounting brackets separately (Step 5).

4¼" x 4¼" aluminum posts also available for use as structural post (with purchase of mounting kit) or sleeve for structural or wooden posts (step 1c).

1a

### STANDARD CROSSOVER ALUMINUM POSTS



2½" x 2½" Aluminum Post

Posts include connected base plate, sandwich plate, trim ring, post cap, and two vinyl shims. Also available in a heavy duty option for 45" and 60".

1b

### OVER-THE-TOP POST OPTIONS

AVALON PANELS MUST BE CUT UP TO 4" SHORTER THAN TOP RAILS PENDING INSTALL APPLICATION



End Post Configuration



Mid Post Configuration



Corner Post Configuration

2" x 2" Aluminum Over-the-Top Post

Posts include connected base plate, sandwich plate, trim ring and two vinyl shims. Brackets to match top rail style sold separately (step 5). For 42" commercial height, over-the-top spans cannot exceed 6' in length between posts.

1c

### 4¼" X 4¼" CROSSOVER ALUMINUM POST OR SLEEVE OPTIONS

a

#### CHOOSE YOUR POST SLEEVE



4¼" x 4¼" x 108" post sleeves can be used as porch columns (5,000 lb load capacity); two mounting kits will be needed in this application.

b

#### SELECT YOUR MOUNTING KIT OR TRIM



Mounting kit includes 2-piece trim, mounting plate, and hardware. Trim ring also sold separately if using post as sleeve.

c

#### SELECT YOUR POST CAP



Flat Post Cap; not needed if running deck board over the top of your posts.

1d

If you're installing Avalon using existing 4" x 4" or 6" x 6" wood posts, 1c offers the ability to sleeve a wooden 4" x 4" post with our aluminum post sleeve, or choose your post options from our **CROSSOVER PRODUCT** (page 88).

2

## CHOOSE YOUR LEVEL OR STAIR SECTION WITH YOUR INFILL DESIGN



3/4" Square Balusters

Pre-assembled level and stair panels. Level panels include 4 brackets and a support foot. Stair panels include 4 brackets. Top rail sold separately.

**NOTE:** Can be used with any Avalon post system, structural post, or wooden post with post sleeve (1a, 1b, 1c, 1d).



Glass Slats

Beam kit for glass slats; includes 4 brackets and a support foot. Glass slats sold separately. Available for level installation only. Top rail sold separately.

**NOTE:** Can be used with any Avalon post system, structural post, or wooden post with post sleeve (1a, 1b, 1c, 1d).

For 42" commercial height, over-the-top spans cannot exceed 5' in length between posts.

3

## CHOOSE YOUR TOP RAIL

Top rails are sold separately and include end covers. Top rails must be purchased to complete the installation.



Pellinore™



End Covers



Tristan™



End Covers



Oberon™\*



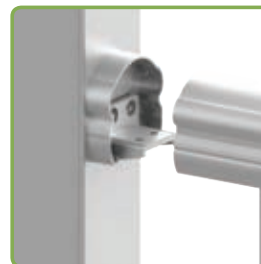
End Covers

\*Oberon top rail can only be installed as a level application (no angles or stairs). Deck board required to install on top of Oberon.

4

## ACCESSORY BRACKETS

If needed, purchase separate brackets for additional installation applications – each bracket kit comes with a pair of top and bottom brackets and a pair of top rail end covers specific for the top rail profile you've selected.



Level Brackets



Level Angle Brackets



Stair Brackets  
(0-38°)



Fixed Angle Stair Brackets  
(29-35°)

Brackets shown with Pellinore top rail and top rail end cover. Fixed angle stair brackets not available for Oberon.

Note: Typical new stair construction utilizes a 7" rise and an 11" run which results in a 32° stair angle.



# HOW TO ORDER

5

## OVER-THE-TOP BRACKETS

Once you've selected your top rail style, select the matching over-the-top post brackets that match your installation plan and posts from step 1b.



Mid Bracket



Corner Bracket



End Bracket

Shown for the Pellinore Top Rail. When using Oberon Top Rail, end bracket covers will be needed for over-the-top end use only; no covers needed for corner or mid over-the-top installations as deck board will run over the top of top rails.

6

## GATE KITS

Gate kits are available in 2 heights to work with 36" and 42" railing. Gate kits include 2 uprights, 2 cross braces, and Boerboel® gate hardware (2 hinges, 1 latch). Simply purchase your rail section and top rail to complete your gate kit installation. Gates cannot exceed 48" in width and cannot be used with glass infill or Oberon Top Rail.



7

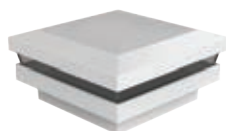
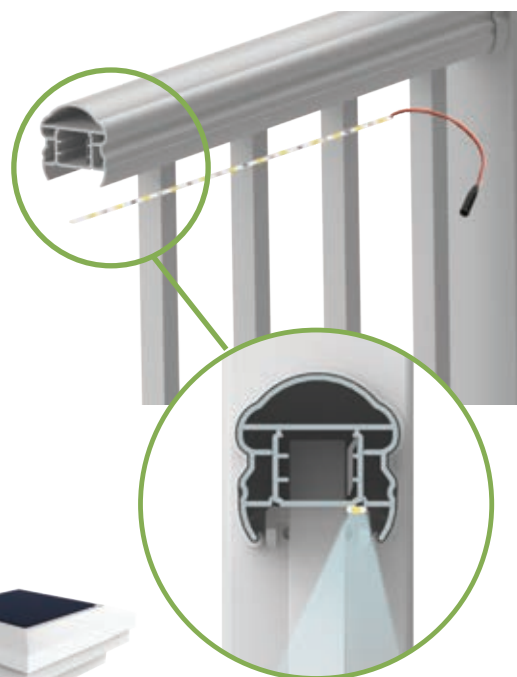
## CHOOSE YOUR LIGHTING OPTIONS

Avalon LED and solar 2½" post lights are powder-coated and color matched for all 3 Avalon colors.

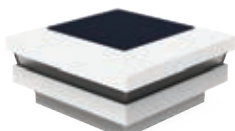
The 3-in-1 LED lighted post cap offers the options for outward and down lighting; simply connect either or both plugs for whichever option you'd like! Output is 0.8W per light option, 1.6W with both plugs connected.

With auto on/off, bright b-lumen lighting, and a long-life battery, our solar post caps have a 3-5 year life expectancy.

In addition to lighted post caps, our Crossover Product under-rail lighting gives a unique look and creates ambiance for your deck. Installs quickly and easily with our plug and play wiring system, and attaches securely with its strong adhesive backing. Simply install the light strip into the light channel and use the supplied adhesive to adhere to your top rail. See page 90 for all the Crossover Product lighting options.



3-in-1 LED Lighted Post Cap



Solar Light Post Cap



Solar Down Light Post Cap

## 1a CROSSOVER – 2½" X 2½" STANDARD POSTS

| DESCRIPTION                     | WHITE    | SATIN BLACK | AGED BRONZE |
|---------------------------------|----------|-------------|-------------|
| 2½" x 2½" x 39" Post            | 73043054 | 73043046    | 73043050    |
| 2½" x 2½" x 45" Post            | 73043055 | 73043047    | 73043051    |
| 2½" x 2½" x 45" Heavy Duty Post | 73043056 | 73043048    | 73043052    |
| 2½" x 2½" x 60" Heavy Duty Post | 73043057 | 73043049    | 73043053    |

## 1b AVALON – 2" X 2" OVER-THE-TOP POSTS

| DESCRIPTION   | WHITE    | SATIN BLACK | AGED BRONZE |
|---|----------|-------------|-------------|
| 2" x 2" x 33" Over-the-Top Post (For 36" finished height) | 73020642 | 73020646    | 73019470    |
| 2" x 2" x 39" Over-the-Top Post (For 42" finished height) | 73020643 | 73020647    | 73019471    |

*NOTE: Avalon panels must be cut up to 4" shorter than top rails pending install application.  
For 42" commercial height, over-the-top spans cannot exceed 6' in length between posts*

## 1c CROSSOVER – 4¼" X 4¼" POSTS/SLEEVES

| DESCRIPTION   | WHITE    | SATIN BLACK | AGED BRONZE |
|---|----------|-------------|-------------|
| 4¼" x 4¼" x 39" Post                                  | 73041379 | 73041378    | 73041376    |
| 4¼" x 4¼" x 45" Post                                  | 73041383 | 73041382    | 73041380    |
| 4¼" x 4¼" x 108" Porch Post – 5,000 lb capacity       | 73041375 | 73041374    | 73041372    |
| Flat Post Cap for 4¼" x 4¼" Posts                     | 73041367 | 73041366    | 73041364    |
| Trim Ring for 4¼" x 4¼" Posts                         | 73041371 | 73041370    | 73041368    |
| Mounting Kit for 4¼" x 4¼" Posts (Includes trim ring) | 73041363 | 73041362    | 73041360    |

## 2 AVALON – LEVEL RAIL PANELS

| DESCRIPTION                                     | WHITE    | SATIN BLACK | AGED BRONZE |
|---|----------|-------------|-------------|
| 6' x 36" Level Rail Panel with Square Balusters | 73019269 | 73019285    | 73019458    |
| 8' x 36" Level Rail Panel with Square Balusters | 73019270 | 73019286    | 73019464    |
| 6' x 42" Level Rail Panel with Square Balusters | 73019273 | 73019289    | 73019459    |
| 8' x 42" Level Rail Panel with Square Balusters | 73019274 | 73019290    | 73019465    |

*Avalon Rail Panels can be used with Avalon posts, Avalon over-the-top posts, Transform posts, and Crossover posts.*

## 2 AVALON – STAIR RAIL PANELS

| DESCRIPTION                                     | WHITE    | SATIN BLACK | AGED BRONZE |
|---|----------|-------------|-------------|
| 6' x 36" Stair Rail Panel with Square Balusters | 73019271 | 73019287    | 73019466    |
| 8' x 36" Stair Rail Panel with Square Balusters | 73019272 | 73019288    | 73019468    |
| 6' x 42" Stair Rail Panel with Square Balusters | 73019275 | 73019291    | 73019467    |
| 8' x 42" Stair Rail Panel with Square Balusters | 73019276 | 73019292    | 73019469    |

| INCLUDED WITH PANELS                           | 6' LEVEL | 8' LEVEL | 6' STAIR | 8' STAIR |
|--|----------|----------|----------|----------|
| Fully Assembled Panel                          | 1        | 1        | 1        | 1        |
| Bracket Set (2 top, 2 bottom, mounting screws) | 1        | 1        | 1        | 1        |



# SKU LIST

## 2 AVALON – GLASS LEVEL RAIL KITS - GLASS SLATS SOLD SEPARATELY

| DESCRIPTION                              | WHITE           | SATIN BLACK     | AGED BRONZE     |
|--|-----------------|-----------------|-----------------|
| 6' Beam Kit for Glass Slats (level only) | <b>73020648</b> | <b>73020652</b> | <b>73019454</b> |
| 8' Beam Kit for Glass Slats (level only) | <b>73020649</b> | <b>73020653</b> | <b>73019460</b> |

6' kits require 9 glass slats and 8' kits require 12 glass slats (sold separately). Top and bottom gaskets for glass slats included with rail kits.

| INCLUDED WITH GLASS RAIL KITS                     | 6' KIT | 8' KIT |
|---|--------|--------|
| Top Beam  | 1      | 1      |
| Bottom Rail                                       | 1      | 1      |
| Glass Slat Gaskets (top and bottom)               | 18     | 24     |
| Bracket Kit (4 level brackets, mounting hardware) | 1      | 1      |
| Support Foot                                      | 1      | 1      |

## 2 CROSSOVER – GLASS SLATS

| DESCRIPTION   | For 36" Rail Height | For 42" Rail Height |
|---|---------------------|---------------------|
| Glass Slats for Level Kits – Box of 9 – For Use with 6' Kits  | <b>73041331</b>     | <b>73041332*</b>    |
| Glass Slats for Level Kits – Box of 12 – For Use with 8' Kits | <b>73041333</b>     | <b>73041334*</b>    |

\*42" glass slats for residential use only.

## 3 AVALON – TOP RAILS – INCLUDES MATCHING END COVERS (2 EACH)

| DESCRIPTION             | WHITE           | SATIN BLACK     | AGED BRONZE     |
|-------------------------|-----------------|-----------------|-----------------|
| 6' Top Rail – Pellinore | <b>73020442</b> | <b>73020448</b> | <b>73019456</b> |
| 8' Top Rail – Pellinore | <b>73020443</b> | <b>73020449</b> | <b>73019462</b> |
| 6' Top Rail – Tristan   | <b>73020446</b> | <b>73020452</b> | <b>73019457</b> |
| 8' Top Rail – Tristan   | <b>73020447</b> | <b>73020453</b> | <b>73019463</b> |
| 6' Top Rail – Oberon*   | <b>73032049</b> | <b>73032042</b> | <b>73032048</b> |
| 8' Top Rail – Oberon*   | <b>73032052</b> | <b>73032050</b> | <b>73032051</b> |

\*Oberon top rail is intended for level applications only. Deck board must be installed on top of Oberon profile.

## 4 AVALON – BRACKETS

| DESCRIPTION  | WHITE           | SATIN BLACK     | AGED BRONZE     |
|--|-----------------|-----------------|-----------------|
| Pellinore Level Bracket Kit (Set of 4 – 2 top, 2 bottom)         | <b>73019301</b> | <b>73019298</b> | <b>73019490</b> |
| Pellinore Stair Bracket Kit (Set of 4 – 2 top, 2 bottom)         | <b>73019310</b> | <b>73019307</b> | <b>73019491</b> |
| Pellinore Fixed Angle Stair Bracket (Set of 4 - 2 top, 2 bottom) | <b>73045480</b> | <b>73045479</b> | <b>73045481</b> |
| Pellinore Angle Bracket Kit (Set of 4 – 2 top, 2 bottom)         | <b>73019318</b> | <b>73019319</b> | <b>73019489</b> |
| Tristan Level Bracket Kit (Set of 4 – 2 top, 2 bottom)           | <b>73019300</b> | <b>73019297</b> | <b>73019496</b> |
| Tristan Stair Bracket Kit (Set of 4 – 2 top, 2 bottom)           | <b>73019309</b> | <b>73019306</b> | <b>73019497</b> |
| Tristan Fixed Angle Stair Bracket (Set of 4 - 2 top, 2 bottom)   | <b>73045483</b> | <b>73045482</b> | <b>73045484</b> |
| Tristan Angle Bracket Kit (Set of 4 – 2 top, 2 bottom)           | <b>73019315</b> | <b>73019316</b> | <b>73019495</b> |
| Oberon Level Bracket Kit (Set of 4 – 2 top, 2 bottom)            | <b>73040784</b> | <b>73040785</b> | <b>73040786</b> |

## 6 AVALON – OVER-THE-TOP BRACKETS

| DESCRIPTION  | WHITE    | SATIN BLACK | AGED BRONZE |
|--|----------|-------------|-------------|
| Pellinore 2" Over-the-Top Post Bracket – Mid Post    | 73020663 | 73020681    | 73019487    |
| Pellinore 2" Over-the-Top Post Bracket – Corner Post | 73020664 | 73020682    | 73019486    |
| Pellinore 2" Over-the-Top Post Bracket – End Post    | 73020665 | 73020683    | 73019488    |
| Tristan 2" Over-the-Top Post Bracket – Mid Post      | 73020666 | 73020684    | 73019494    |
| Tristan 2" Over-the-Top Post Bracket – Corner Post   | 73020667 | 73020685    | 73019492    |
| Tristan 2" Over-the-Top Post Bracket – End Post      | 73020668 | 73020686    | 73019493    |
| Oberon 2" Over-the-Top Post Bracket – Mid Post*      | 73040798 | 73040797    | 73040799    |
| Oberon 2" Over-the-Top Post Bracket – Corner Post*   | 73040801 | 73040800    | 73040802    |
| Oberon 2" Over-the-Top Post Bracket – End Post       | 73040788 | 73040787    | 73040796    |

\*Does not include bracket covers; deck board will install over the top of Oberon top rail.

## 6 AVALON – GATE KITS

| DESCRIPTION  | WHITE    | SATIN BLACK | AGED BRONZE |
|--------------|----------|-------------|-------------|
| 36" Gate Kit | 73020655 | 73020654    | 73019478    |
| 42" Gate Kit | 73020658 | 73020657    | 73019479    |

Gate Kits include uprights, cross braces, and Boerboel® gate kit hardware (2 hinges, 1 gravity latch – black only). Complete your gate by purchasing your rail panel and top rail separately. Gate kits cannot be used with Avalon glass and cannot exceed widths of 48".

## 7 CROSSOVER – 2½" POST LIGHTED POST CAPS

| DESCRIPTION                        | WHITE    | SATIN BLACK | AGED BRONZE |
|------------------------------------|----------|-------------|-------------|
| 3-in-1 LED Lighted Post Cap (1.6W) | 73021946 | 73021947    | 73021948    |
| Solar Light Post Cap               | 73044955 | 73044954    | 73044941    |
| Solar Down Light Post Cap          | 73044936 | 73044935    | 73044953    |

If using the LED lighted post cap, select your wiring accessories from our selection of plug-and-play options on page 90.

## 8 CROSSOVER – TOUCH UP PAINT

| DESCRIPTION                             | WHITE    | SATIN BLACK | AGED BRONZE |
|---|----------|-------------|-------------|
| Touch Up Paint Aerosol (12 oz)          | 73022328 | 73044481    | 73044482    |
| Touch Up Paint Pen (⅓ fl oz)            | 73022351 | N/A         | N/A         |
| Touch Up Paint Bottle & Brush (½ fl oz) | N/A      | 73044483    | 73044484    |



# STEEL RAILING





# METALWORKS EXCALIBUR®



## METAL WORKS® EXCALIBUR®

Metal Works Excalibur brings you strength and security in steel railing. Excalibur features hidden attachments and pre-attached brackets, allowing for ease of installation. Available in textured Satin Black and Hammered Bronze finishes along with accessories to help you customize your install with a deck board top, Excalibur gives you the strength of steel in a traditional style and timeless style.





# FEATURE SPOTLIGHT



1

## BRACKETED POSTS

Pre-attached level brackets means no measuring, pre-drilling, or attaching brackets to the posts and ensures consistent code-compliant bottom spacing (available for both 2" and 4" bottom space heights) and finished rail height. Metal Works Excalibur 2" & 3" posts are available in corner, mid, end, and blank post configurations for any installation you need!

2

## ALL-IN-ONE PIVOTING BRACKETS

Our unique all-in-one pivoting brackets allow attachment at virtually any stair pitch or level angle without difficult miter cuts.

3

## TRIPLE-COAT SATIN BLACK & HAMMERED BRONZE FINISHES

Components are fully welded prior to immersion in a zinc phosphate bath. They are then galvanized prior to an electrostatically applied powder coat finish which is baked for maximum durability. The low gloss Satin Black and textured, Hammered Bronze finishes help hide marring, fingerprints, and dirt.

4

## FULLY ASSEMBLED, FACTORY-WELDED RAIL PANELS

Assembled and welded rail panels save valuable installation time. The process is as easy as: measure, cut and install.

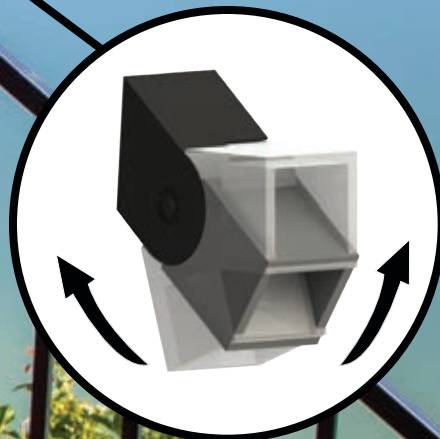
*The Metal Works Excalibur Railing System exceeds U.S. building code requirements. Always consult your local Building Code Department for applicable regulations and product acceptance. For additional information on Excalibur or other RDI products visit [www.rdirail.com](http://www.rdirail.com) or contact our Customer Service Department at (877) 420-7245.*



# METALWORKS EXCALIBUR®



2



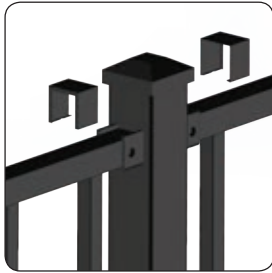


# HOW TO ORDER

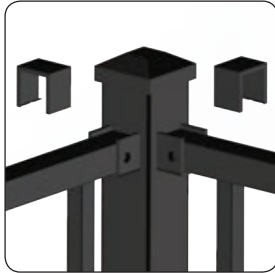
1

## SELECT YOUR POST OPTIONS

Excalibur 2" x 2" and 3" x 3" posts come in three options with pre-mounted brackets and blank posts for more customized installations. Excalibur 2" x 2" fascia posts come as blank posts; purchase your brackets separately.



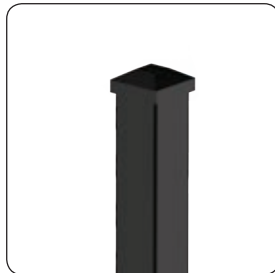
Mid Post



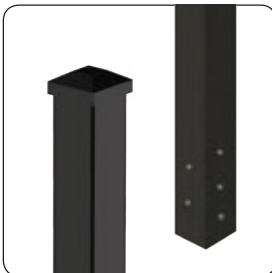
Corner Post



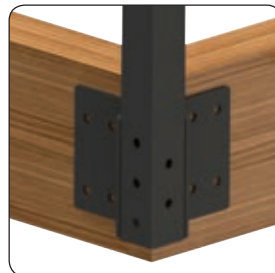
End Post



Blank Post



Fascia Post



Fascia Post shown with brackets

Excalibur bracketed posts come with welded base plates, pre-attached brackets, pre-mounted post top, bracket covers, two-piece trim ring, and vinyl shims.

Blank posts come with welded base plates, pre-mounted post top, two-piece trim ring and vinyl shims.

Fascia post comes with pre-mounted post top and vinyl shims. Brackets sold separately.

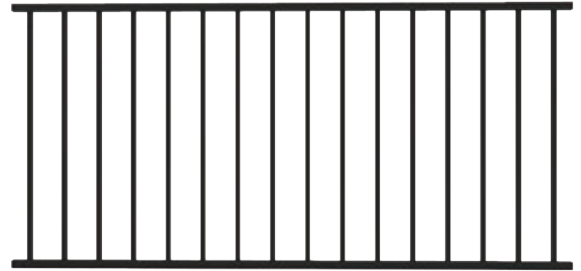
2

## CHOOSE LEVEL OR STAIR SECTIONS

Factory welded pre-assembled level and stair panels make installation simple! Available in 34" and 40" height for varying finished rail heights depending on bottom space on post.

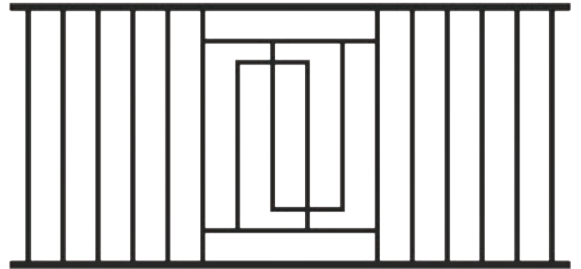
### Traditional Level Panel

6'  
8'  
10'



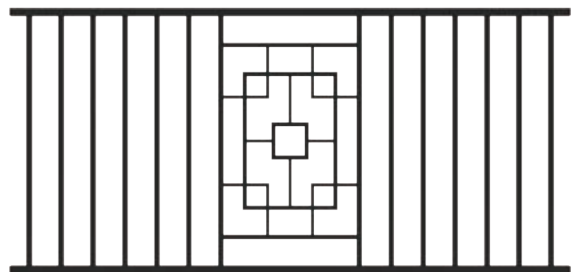
### Serpentine Level Panel

6'  
8'



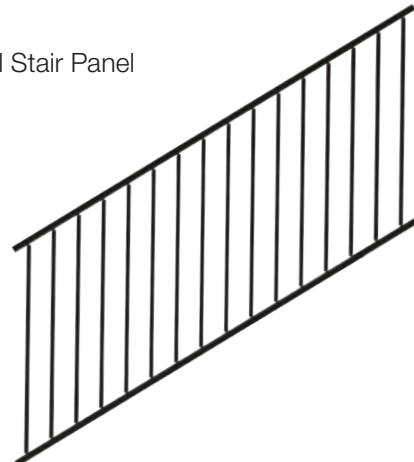
### Mosaic Level Panel

6'  
8'



### Traditional Stair Panel

6'  
8'



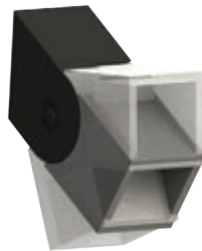
3

## CHOOSE YOUR BRACKETS

Mid, corner, and end posts all include brackets for level rail installation. Stair brackets must be purchased separately. If installing Excalibur onto existing posts, level brackets may also be purchased separately.



Level Brackets



Stair Bracket (can also be used for level angles 0 - 45°)



Fascia Brackets



Scrollwork Decorative  
Level Bracket



Imperial Decorative  
Level Bracket

| Steel Post   |                      |                      |             |
|--------------|----------------------|----------------------|-------------|
| Panel Height | Minimum Bottom Space | Maximum Bottom Space | Post Height |
| 36"          | 25⁄8"                | 4"                   | 40"         |
| 42"          |                      |                      | 46"         |
| Wood Post    |                      |                      |             |
| Panel Height | Minimum Bottom Space | Maximum Bottom Space | Post Height |
| 36"          | 2"                   | 4"                   | 38"         |
| 42"          |                      |                      | 44"         |

Decorative brackets can be used on wood (with or without vinyl or composite sleeves) or steel posts; includes mounting hardware for both vinyl or composite sleeved wood posts and steel posts.

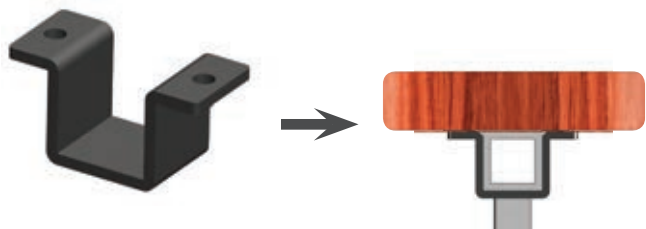


# HOW TO ORDER

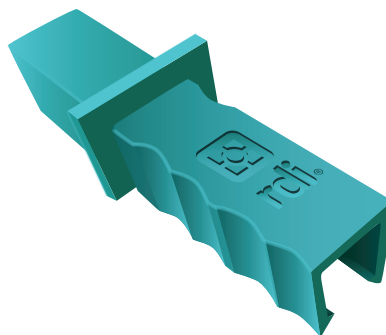
4

## ACCESSORIES

Customize your Excalibur installation by using our flush mount brackets to mount any type of deck board to the top of your railing. The Rail Cutting Jig helps to cut the steel Excalibur panels when using a jigsaw.



Flush Mount Bracket

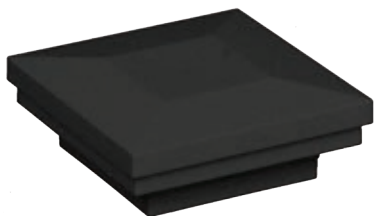


Rail Cutting Jig

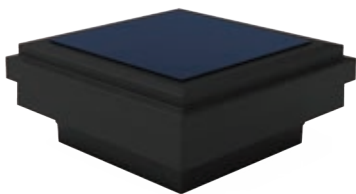
5

## LIGHTING

Excalibur LED and Solar lighted post caps are available to fit both 2" and 3" posts and are offered in Satin Black. See page 90 for all the Crossover Product lighting options.



LED Down Light Post Cap  
(0.80W – 2" or 3")

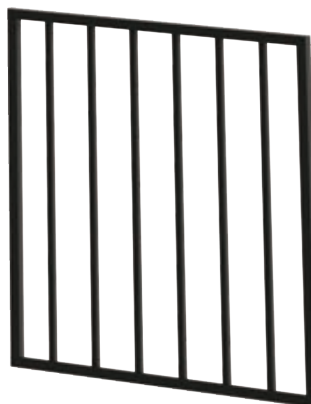


Solar Down Light Post  
Cap (2" or 3")

6

## GATES

If needed, purchase your gate – (finished gate opening is 36") or gate kit ends for 36" – 38" or 42" – 44" installed height (use with rail panel – purchase separately).



Pre-Assembled Gate



Gate Ends

# SKU LIST

# METALWORKS EXCALIBUR®

## 1a METAL WORKS EXCALIBUR – 2" X 2" POSTS

| DESCRIPTION   | SATIN BLACK | HAMMERED BRONZE |
|---|-------------|-----------------|
| 2" x 2" x 38" Mid Post Assembly for 36" Rail Height with 2" Bottom Space    | 73018345    | 73018346        |
| 2" x 2" x 38" End Post Assembly for 36" Rail Height with 2" Bottom Space    | 73018336    | 73018337        |
| 2" x 2" x 38" Corner Post Assembly for 36" Rail Height with 2" Bottom Space | 73018326    | 73018327        |
| 2" x 2" x 44" Mid Post Assembly for 42" Rail Height with 2" Bottom Space    | 73018349    | 73018350        |
| 2" x 2" x 44" End Post Assembly for 42" Rail Height with 2" Bottom Space    | 73018339    | 73018340        |
| 2" x 2" x 44" Corner Post Assembly for 42" Rail Height with 2" Bottom Space | 73018330    | 73018331        |
| 2" x 2" x 40" Mid Post Assembly for 38" Rail Height with 4" Bottom Space    | 73018347    | 73018348        |
| 2" x 2" x 40" End Post Assembly for 38" Rail Height with 4" Bottom Space    | 73018021    | 73018338        |
| 2" x 2" x 40" Corner Post Assembly for 38" Rail Height with 4" Bottom Space | 73018023    | 73018328        |
| 2" x 2" x 38" Blank Post for 36" Rail Height (Brackets sold separately)     | 73018315    | 73018316        |
| 2" x 2" x 40" Blank Post for 38" Rail Height (Brackets sold separately)     | 73018317    | 73018022        |
| 2" x 2" x 44" Blank Post for 42" Rail Height (Brackets sold separately)     | 73018318    | 73018319        |
| 2" x 2" x 46" Blank Post for 44" Rail Height (Brackets sold separately)     | 73018320    | 73018321        |
| 2" x 2" x 48" Blank Post (Brackets sold separately)                         | 73018322    | 73018323        |
| 2" x 2" x 52" Fascia Mount Post (Fascia brackets sold separately)           | 73019191    | 73019192        |

You may need to purchase a longer blank post for stair application depending on your installation scenario.

## 1b METAL WORKS EXCALIBUR – 3" X 3" POSTS

| DESCRIPTION  | SATIN BLACK | HAMMERED BRONZE |
|--|-------------|-----------------|
| 3" x 3" x 38" Mid Post Assembly for 36" Rail Height with 2" Bottom Space       | 73044021    | 73044027        |
| 3" x 3" x 38" End Post Assembly for 36" Rail Height with 2" Bottom Space       | 73044020    | 73044026        |
| 3" x 3" x 38" Corner Post Assembly for 36" Rail Height with 2" Bottom Space    | 73044022    | 73044028        |
| 3" x 3" x 40" Mid Post Assembly for 38" Rail Height with 4" Bottom Space       | 73044024    | 73044030        |
| 3" x 3" x 40" End Post Assembly for 38" Rail Height with 4" Bottom Space       | 73044023    | 73044029        |
| 3" x 3" x 40" Corner Post Assembly for 38" Height Rail with 4" Bottom Space    | 73044025    | 73044031        |
| 3" x 3" x 40" Blank Post for 36" to 38" Rail Height (Brackets sold separately) | 73032020    | 73032021        |
| 3" x 3" x 46" Blank Post for 36" to 44" Rail Height (Brackets sold separately) | 73032022    | 73032023        |

You may need to purchase a longer blank post for stair application depending on your installation scenario.

## 1c METAL WORKS EXCALIBUR – POSTS – CALIFORNIA ONLY\*

| DESCRIPTION   | SATIN BLACK | HAMMERED BRONZE |
|---|-------------|-----------------|
| 2" x 2" x 44" Mid Post Assembly for 42" Rail Height with 4" Bottom Space    | 73018046    | 73018047        |
| 2" x 2" x 44" End Post Assembly for 42" Rail Height with 4" Bottom Space    | 73018044    | 73018045        |
| 2" x 2" x 44" Corner Post Assembly for 42" Height Rail with 4" Bottom Space | 73018043    | 73018329        |

\* These SKUs are CA code compliant and only housed in our west coast warehouse. They are for distribution in CA only.



# SKU LIST

## 2 METAL WORKS EXCALIBUR – TRADITIONAL RAIL PANELS

| DESCRIPTION                                   | SATIN BLACK | HAMMERED BRONZE |
|---|-------------|-----------------|
| 6' x 34" Level Rail Panel – Square Baluster   | 73018004    | 73018298        |
| 8' x 34" Level Rail Panel – Square Baluster   | 73018024    | 73018016        |
| 10' x 34" Level Rail Panel – Square Baluster* | 73018015    | 73018291        |
| 6' x 34" Stair Rail Panel – Square Baluster   | 73018019    | 73018304        |
| 8' x 34" Stair Rail Panel – Square Baluster   | 73018310    | 73018311        |
| 6' x 40" Level Rail Panel – Square Baluster   | 73018299    | 73018300        |
| 8' x 40" Level Rail Panel – Square Baluster   | 73018018    | 73018303        |
| 8' x 40" Stair Rail Panel – Square Baluster   | 73018020    | 73018314        |

34" panels can be installed at a finished rail height of 36" with 2" bottom space or 38" with 4" bottom space.

40" panels can be installed at a finished rail height of 42" with 2" bottom space or 44" with 4" bottom space.

\*10' Excalibur panels can be used to cut down to shorter lengths or for long spans where code compliance is not required.

## 2 METAL WORKS EXCALIBUR – TRADITIONAL RAIL PANELS – CALIFORNIA ONLY\*

| DESCRIPTION                                   | SATIN BLACK | HAMMERED BRONZE |
|---|-------------|-----------------|
| 6' x 38 ¼" Level Rail Panel – Square Baluster | 73018030    | 73018031        |
| 8' x 38 ¼" Level Rail Panel – Square Baluster | 73018032    | 73018033        |
| 6' x 32 ¼" Stair Rail Panel – Square Baluster | 73018034    | 73018035        |
| 8' x 32 ¼" Stair Rail Panel – Square Baluster | 73018036    | 73018309        |

\* These SKUs are CA code compliant and only housed in our west coast warehouse. They are for distribution in CA only.

## 2 METAL WORKS EXCALIBUR – SERPENTINE RAIL PANELS

| DESCRIPTION  | SATIN BLACK | HAMMERED BRONZE |
|--|-------------|-----------------|
| 6' x 34" Serpentine Level Rail Panel – Square Baluster with Design | 73045160    | 73045168        |
| 8' x 34" Serpentine Level Rail Panel – Square Baluster with Design | 73045161    | 73045169        |
| 6' x 40" Serpentine Level Rail Panel – Square Baluster with Design | 73045162    | 73045170        |
| 8' x 40" Serpentine Level Rail Panel – Square Baluster with Design | 73045163    | 73045171        |

## 2 METAL WORKS EXCALIBUR – MOSAIC RAIL PANELS

| DESCRIPTION  | SATIN BLACK | HAMMERED BRONZE |
|--|-------------|-----------------|
| 6' x 34" Serpentine Level Rail Panel – Square Baluster with Design | 73045156    | 73045164        |
| 8' x 34" Serpentine Level Rail Panel – Square Baluster with Design | 73045157    | 73045165        |
| 6' x 40" Serpentine Level Rail Panel – Square Baluster with Design | 73045158    | 73045166        |
| 8' x 40" Serpentine Level Rail Panel – Square Baluster with Design | 73045159    | 73045167        |

| INCLUDED WITH PANELS  | 6' LEVEL | 8' LEVEL | 10' LEVEL | 6' STAIR | 8' STAIR |
|-----------------------|----------|----------|-----------|----------|----------|
| Fully Assembled Panel | 1        | 1        | 1         | 1        | 1        |
| Brackets              | 0        | 0        | 0         | 0        | 0        |

## 3 METAL WORKS EXCALIBUR – BRACKETS

| DESCRIPTION  | SATIN BLACK | HAMMERED BRONZE |
|--|-------------|-----------------|
| Bracket Kit for Level Rail   | 73018013    | 73018025        |
| Bracket Kit for Stair or Level Angle Rail                                    | 73018014    | 73018026        |
| Imperial Decorative Bracket for Level Rail*                                  | 73044946    | 73044947        |
| Scrollwork Decorative Bracket for Level Rail*                                | 73044948    | 73044949        |
| Fascia Post Bracket Kit – Mounting Hardware Not Included – For 2" Posts Only | 73019193    | 73019194        |

\* Decorative brackets come with hardware to attach to either wooden posts or steel posts.

## 4 METAL WORKS EXCALIBUR – ACCESSORIES

| DESCRIPTION                          | SATIN BLACK | HAMMERED BRONZE |
|--------------------------------------|-------------|-----------------|
| 2" LED Post Cap (0.80W)              | 73043000    | N/A             |
| 3" LED Post Cap (0.80W)              | 73043001    | N/A             |
| 2" Solar Down Light Post Cap         | 73044933    | N/A             |
| 3" Solar Down Light Post Cap         | 73044934    | N/A             |
| Top Cap Flush Bracket Kit (Set of 4) | 73018886    | 73018887        |
| Rail Cutting Jig                     | 73018283    |                 |

To see all the LED lighting options and details, see our Crossover LED Lighting on page 90.

## 5 METAL WORKS EXCALIBUR – GATES

| DESCRIPTION  | SATIN BLACK | HAMMERED BRONZE |
|--|-------------|-----------------|
| 34" x 36" Gate, Assembled for 36"– 38" Rail – 36" Finished Opening           | 73018268    | N/A             |
| Gate Ends for 36"– 38" Rail – Custom Width – Rail Panel Sold Separately      | 73018276    | 73018277        |
| Gate Ends for 42" Rail – Custom Width – Rail Panel Sold Separately (CA only) | 73018278    | 73018279        |
| Gate Ends for 42"– 44" Rail – Custom Width – Rail Panel Sold Separately      | 73018280    | 73018281        |
| Boerboel® Hardware – Compact Butterfly Hinge Kit Pair (Black aluminum)       | 73024441    |                 |
| Boerboel® Hardware – Gravity Latch (Black steel)                             | 73024440    |                 |

## 6 CROSSOVER – TOUCH UP PAINT

| DESCRIPTION                             | SATIN BLACK |
|---|-------------|
| Touch Up Paint Aerosol (12 oz)          | 73044481    |
| Touch Up Paint Bottle & Brush (½ fl oz) | 73044483    |

Note: Cut rail ends may be painted with any zinc rich primer or paint. For Satin Black touch-ups, Crossover Touch-up paint or Rust-Oleum®\* Satin Canyon Black, color code 249844 is recommended. For Hammer Bronze touch-ups, we recommend Rust-Oleum® Hammered Brown, color code 210880.

\*Rust-Oleum® is a registered trademark of Rust-Oleum Brand Company.



# VINYL RAILING



**ENDURANCE® ORIGINAL RAIL™** is our fully kitted railing system – with everything you need to build out your railing in one box. Simple form and dependable function unite this railing design to maintain safety without sacrificing the elegant presentation of your home or commercial space. Kits are available in your choice of balusters: square, turned, or round aluminum.





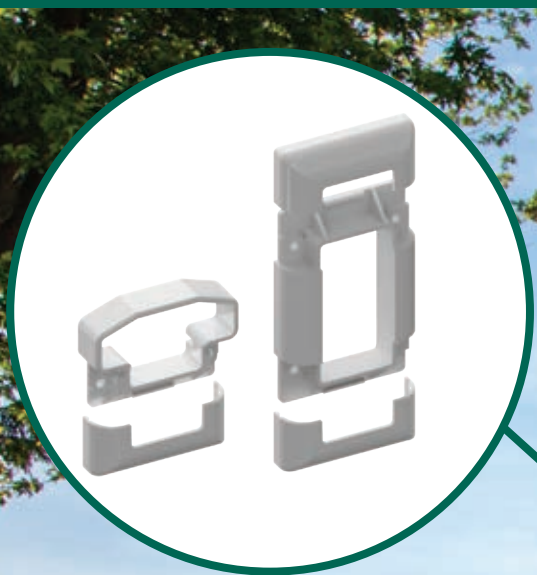
# Endurance<sup>®</sup>

ORIGINAL RAIL™





# FEATURE SPOTLIGHT



1

1

## EASY-TO-INSTALL BRACKETS

Endurance Original Rail brackets install simply. Slide brackets over rails, secure brackets to posts, and lock rails to brackets.

2

## HIDDEN FASTENERS FOR A CLEAN LOOK

Snap-fit bracket covers hide mounting hardware for a clean and finished look to your install.

3

## EASY STAIR INSTALLATION

No-cut stair brackets install easily to accommodate 32° – 38° stair angles. Bottom stair brackets include quick-fit inserts to accommodate low and high stair angles; no complicated measuring or cutting.

4

## ENGINEERED STRENGTH

The aluminum stiffener adds strength and support to the vinyl profile and runs the length of the top and bottom lineals.

*The Endurance Original Rail System exceeds U.S. building code requirements and has been independently tested by PFS laboratories, a third-party, ICC-ES certified testing and inspection agency. Always consult your local Building Code Department for applicable regulations and product acceptance. For additional information on Endurance or other RDI products visit [www.rdirail.com](http://www.rdirail.com) or contact our Customer Service Department at (877) 420-7245.*



# Endurance<sup>®</sup>

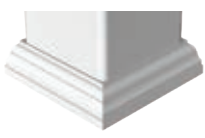
## ORIGINAL RAIL™





# HOW TO ORDER

- 1 SELECT YOUR POST & POST ACCESSORY OPTIONS. SEE PAGE 88 FOR CROSSOVER PRODUCT.
- a CHOOSE A POST SLEEVE
- b CHOOSE A TRIM RING
- c CHOOSE A POST CAP



2

CHOOSE YOUR LEVEL AND STAIR SECTIONS.

(Square balusters shown. See below for all baluster styles). All kits available in 36" height (with 2" bottom space), square baluster kits also available in 42" height (with a 2" bottom space).

Level Kits  
4'\*

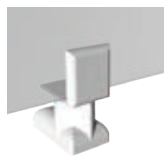
6'

8'

10'\*



Support Foot  
Required for level sections over 8' in length



2" – 4" Level Rail Support Kit

Stair Kits  
6'

8'\*



\*4' level kits not available for round aluminum, turned, or glass. 10' level kits not available for glass.

## BALUSTER STYLES



Square Balusters  
(1¼")



Turned Balusters  
(1¼")



Black Round Balusters  
(¾" Round Aluminum)



Glass Slats  
(Level only - sold separately from rail kit)

### 3

#### ACCESSORY BRACKET KITS

Endurance Original Rail kits come with the level or stair brackets needed for each kit. Original Rail also offers a full line of accessory brackets for other railing installation applications.



Level Mounting  
Bracket Kit



Stair Mounting  
Bracket Kit



0° – 44° Level  
Bracket Kit\*



45° Mounting  
Bracket Kit



Round Column  
Mounting  
Bracket Kit For  
8" Columns



Paintable Round  
Column Bracket  
Adapter Kit for 8"  
Columns

\*Maximum straight cut for the 0° – 44° bracket is 32°. For angles of 33° – 44°, bracket must be v-notch cut.

### 4

#### CHOOSE YOUR GATE KIT

A standard gate kit (36" wide opening) is available for 36" finished rail height, 1 1/4" square balusters, white only. Custom width gates are available in 36" and 42" finished heights with multiple color and baluster options. Custom width gates cannot exceed 48" in width. Gate hardware sold separately. See page 91 for all Crossover gate kit options.



Standard Gate Kit

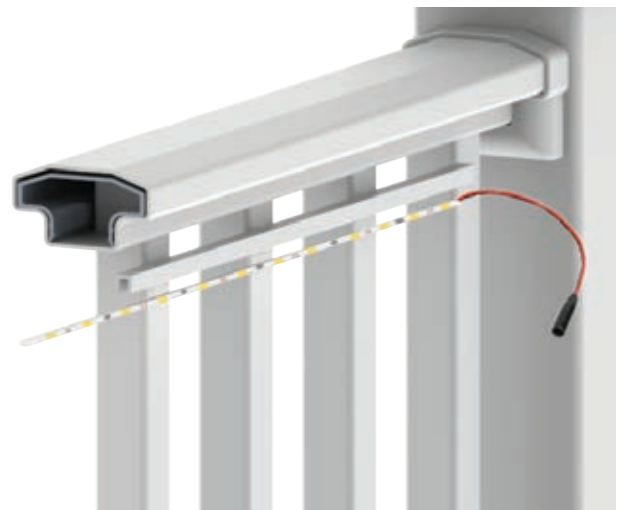


Custom Gate Kit

### 5

#### CHOOSE YOUR LIGHTING OPTIONS

In addition to solar and LED post caps, our under-rail lighting gives a unique look and creates ambiance for your deck. Installs quickly and easily with our new plug and play wiring system, and attaches securely with its strong adhesive backing. Simply install the light strip into the light channel and use supplied adhesive to adhere to your top rail. See page 90 in Crossover Product for details on lighting systems.





# SKU LIST

**1** For other post options (including 4" x 4", 5" x 5", and 6" x 6", and structural posts) and additional accessories see our Crossover Product section on page 88.

## **2** ENDURANCE ORIGINAL RAIL – 1¼" SQUARE BALUSTER KITS

| DESCRIPTION                         | WHITE    | EARTH    | DUNE     |
|-------------------------------------|----------|----------|----------|
| 4' x 36" H – Level Rail Kit         | 73018509 | N/A      | N/A      |
| 6' x 36" H – Level Rail Kit         | 73018009 | 73018527 | 73041395 |
| 8' x 36" H – Level Rail Kit         | 73018000 | 73018537 | 73041396 |
| 10' x 36" H – Level Rail Kit        | 73018498 | N/A      | N/A      |
| 6' x 36" H – 32°-38° Stair Rail Kit | 73019104 | 73019102 | 73041397 |
| 8' x 36" H – 32°-38° Stair Rail Kit | 73019116 | 73019114 | 73041398 |
| 6' x 42" H – Level Rail Kit         | 73018705 | 73018706 | 73041399 |
| 8' x 42" H – Level Rail Kit         | 73018708 | 73018709 | 73041400 |
| 6' x 42" H – 32°-38° Stair Rail Kit | 73019113 | 73019111 | 73041401 |
| 8' x 42" H – 32°-38° Stair Rail Kit | 73019125 | 73019123 | 73041402 |

## **2** ENDURANCE ORIGINAL RAIL – ¾" ROUND ALUMINUM BALUSTER KITS

| DESCRIPTION                         | WHITE    | EARTH    | DUNE     |
|-------------------------------------|----------|----------|----------|
| 6' x 36" H – Level Rail Kit         | 73018553 | 73018554 | 73041404 |
| 8' x 36" H – Level Rail Kit         | 73018558 | 73018559 | 73041405 |
| 10' x 36" H – Level Rail Kit        | 73018547 | N/A      | N/A      |
| 6' x 36" H – 32°-38° Stair Rail Kit | 73019110 | 73019108 | 73041406 |
| 8' x 36" H – 32°-38° Stair Rail Kit | 73019122 | 73019120 | 73041407 |

## **2** ENDURANCE ORIGINAL RAIL – 1¼" TURNED BALUSTER KITS

| DESCRIPTION   | WHITE    |
|---|----------|
| 6' x 36" H – Level Rail Kit – 1¼" Turned Baluster         | 73018633 |
| 8' x 36" H – Level Rail Kit – 1¼" Turned Baluster         | 73018636 |
| 10' x 36" H – Level Rail Kit – 1¼" Turned Baluster        | 73018626 |
| 6' x 36" H – 32°-38° Stair Rail Kit – 1¼" Turned Baluster | 73019107 |
| 8' x 36" H – 32°-38° Stair Rail Kit – 1¼" Turned Baluster | 73019119 |

## **2** ENDURANCE ORIGINAL RAIL – GLASS SLAT KITS (SLATS SOLD SEPARATELY)

| DESCRIPTION   | WHITE    |
|---|----------|
| 6' Level Rail Kit – for Glass Slats – Requires 9 Level Glass Slats  | 73018530 |
| 8' Level Rail Kit – for Glass Slats – Requires 12 Level Glass Slats | 73018540 |

## 2 CROSSOVER – GLASS SLATS

| DESCRIPTION   | 36"             | 42"              |
|---|-----------------|------------------|
| Glass Slats for Level Kits – Box of 9 – For Use with 6' Kits  | <b>73041331</b> | <b>73041332*</b> |
| Glass Slats for Level Kits – Box of 12 – For Use with 8' Kits | <b>73041333</b> | <b>73041334*</b> |

\*42" glass slats for residential use only.

| INCLUDED IN KITS                 | 4' LEVEL | 6' LEVEL | 8' LEVEL | 10' LEVEL | 6' STAIR | 8' STAIR |
|----------------------------------|----------|----------|----------|-----------|----------|----------|
| 1 1/4" Balusters (Square/turned) | 9*       | 14       | 19       | 24        | 11       | 15       |
| 3/4" Balusters (Round aluminum)  | N/A      | 15       | 20       | 26        | 14       | 19       |
| Glass Slats                      | N/A      | 0        | 0        | N/A       | 0        | N/A      |
| Top Vinyl Rail                   | 1        | 1        | 1        | 1         | 1        | 1        |
| Top Aluminum Stiffener           | 1        | 1        | 1        | 1         | 1        | 1        |
| Bottom Vinyl Rail                | 1        | 1        | 1        | 1         | 1        | 1        |
| Bottom Aluminum Stiffener        | 1        | 1        | 1        | 1         | 1        | 1        |
| Bracket Kit (2 top, 2 bottom)    | 1        | 1        | 1        | 1         | 1        | 1        |
| Support Foot (Glass kits only)** | N/A      | 1        | 1        | N/A       | 0        | 0        |

\*4' kits only available in 1 1/4" square balusters, not available for turned balusters.

\*\* Support foot required for glass railing sections 6' to 8'.

## 3 ENDURANCE ORIGINAL RAIL – ACCESSORIES

| DESCRIPTION  | WHITE           | EARTH           | DUNE            |
|--|-----------------|-----------------|-----------------|
| Level Mounting Bracket Kit – 2 Pairs                         | <b>73019016</b> | <b>73019018</b> | <b>73041408</b> |
| Stair Mounting Bracket Kit – 2 Pairs                         | <b>73019017</b> | <b>73019019</b> | <b>73041409</b> |
| Round Column Mounting Bracket Kit – 1 Pair                   | <b>73018115</b> | <b>73018113</b> | <b>73041410</b> |
| Paintable Round Column Mounting Bracket Adapter Kit – 1 Pair | <b>73018116</b> | <b>N/A</b>      | <b>N/A</b>      |
| 0° to 44° Level Mounting Bracket Kit – 1 Pair                | <b>73018065</b> | <b>73018017</b> | <b>73041411</b> |
| 45° Level Mounting Bracket Kit – 1 Pair                      | <b>73018086</b> | <b>73018084</b> | <b>73041412</b> |
| 2" – 4" Level Rail Support Kit                               | <b>73018129</b> | <b>73018127</b> | <b>73041494</b> |

Level rail support required for lengths over 8' (10' panels being used at any lengths longer than 8'). Endurance Original Rail kits (except glass kits) do not include a support foot.

4 For gate options, see our Crossover gates on page 91

5 To see all the LED lighting options and details, see our Crossover LED Lighting on page 90.



# VINYL RAILING



**FINYL LINE™** low-maintenance vinyl railing, reinforced with strong aluminum, adds character to your home while providing safety and security. Easy to install and code compliant for residential (IRC) & commercial (IBC), Fynl Line is sure to meet your railing needs. Select from a traditional T-Top profile or a Deck Top profile, and your choice of traditional square, elegant turned and classic round aluminum balusters with kits available in White, Earth, or Dune. Fynl Line is supported by a full range of accessories including post sleeves, post caps & trims, and LED lighting options.





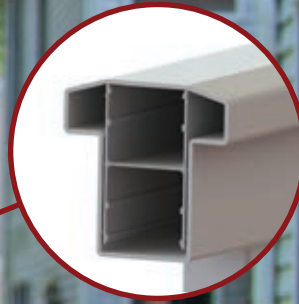




# FEATURE SPOTLIGHT







4



White



Earth



Dune

1

## ENGINEERED STRENGTH

Finyl Line's top and bottom aluminum stiffeners add strength and support to the vinyl profile and run the full length of the lineals ensuring a strong rail that won't sag.

2

## BRACKETS INCLUDED IN KITS

Brackets are included with rail kits and are available separately in level, stair, and angle, along with 22.5°, 45°, and round column adapter kits. Brackets include bracket screw covers that snap onto bracket sides for a clean finished look with no exposed hardware. Bracket kits include hardware for installation.

3

## STYLE OPTIONS

Finyl Line railing kits are available with 1½" square or turned balusters or ¾" black round aluminum balusters and 36" or 42" heights.

4

## TOP RAIL PROFILES

Choose the top rail that creates the look you want! Finyl Line offers a traditional T-Top style top rail or a Deck Top rail that allows you to add a deck board to create a drink top surface for your railing.

*The Finyl Line Rail System exceeds U.S. building code requirements and has been independently tested by PFS laboratories, a third-party, ICC-ES certified testing and inspection agency. Always consult your local Building Code Department for applicable regulations and product acceptance. For additional information on Finyl Line or other RDI products visit [www.rdirail.com](http://www.rdirail.com) or contact our Customer Service Department at (877) 420-7245.*



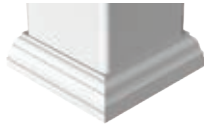
# HOW TO ORDER

## 1 SELECT YOUR POST & POST ACCESSORY OPTIONS. SEE PAGE 88 FOR CROSSOVER PRODUCT.

### a CHOOSE A POST SLEEVE



### b CHOOSE A TRIM RING



### c CHOOSE A POST CAP



## 2 CHOOSE YOUR T-TOP OR DECK TOP LEVEL AND STAIR SECTIONS.

(Square balusters shown. See below for all baluster styles). Kits available in 36" height (with 2" bottom space); square baluster kits also available in 42" height (with a 2" bottom space).

### Top Rail Profiles



T-Top Profile



Deck Top Profile

### Level Kits

4'\*

5'\*

6'

8'

10'\*



\*Select colors and styles not available in 4', 5', and 10' lengths.

### Stair Kits

6'\*

8'



\*Select colors and styles not available in 6' stair kits.

## 3 BALUSTER STYLES

All rail kits include balusters; 3 baluster styles available.



Square Balusters  
(1½")



Turned Balusters  
(1½")

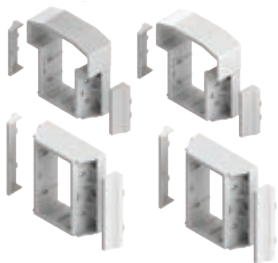


Black Round Balusters  
(¾" Aluminum)

### 3

#### BRACKET KITS

All Finyl Line rail kits include brackets. Brackets also sold separately including swivel brackets for T-Top rails and bracket adapters.



T-Top Level Brackets



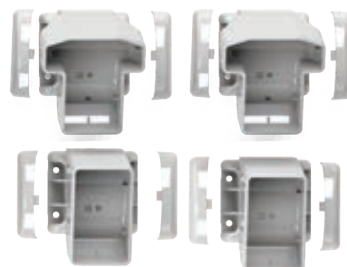
T-Top Stair Brackets (26-38°)



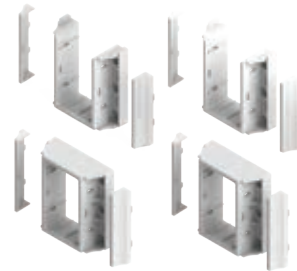
T-Top Angle Brackets



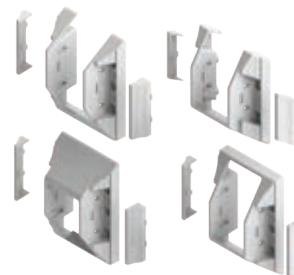
T-Top Swivel Level-Angle Brackets (0-44°)



T-Top Swivel Stair Brackets (0-45°)



Deck Top Level Brackets



Deck Top Stair Brackets (26-38°)



Deck Top Angle Brackets



Round Column Adapter for 8" Columns



22.5° Adapter



45° Adapter

### 4

#### CHOOSE YOUR GATE KIT

A standard gate kit (36" wide opening) is available for 36" finished rail height, 1¼" square balusters, white only. (Note: Finyl Line rail kits come standard with 1½" balusters.) Custom width gates are available in 36" and 42" finished heights with multiple color and baluster options. Custom width gates cannot exceed 48" in width. Gate hardware sold separately. See page 91 for all gate options.



### 5

#### CHOOSE YOUR LIGHTING OPTIONS

In addition to solar and LED post caps, our under-rail lighting gives a unique look and creates ambiance for your deck. Installs quickly and easily with our new plug and play wiring system, and attaches securely with its strong adhesive backing. Simply install the light strip into the light channel and use the supplied adhesive to adhere to your top rail. See page 90 for all the lighting options.





# SKU LIST

**1** For other post options (including 4" x 4", 5" x 5", 6" x 6", and structural posts) and additional accessories see our Crossover Product section on page 88.

## **2** FINYL LINE T-TOP – 1½" SQUARE BALUSTER RAIL KITS – 36" HEIGHT

| DESCRIPTION                          | WHITE    | WHITE*   | EARTH    | DUNE     |
|--------------------------------------|----------|----------|----------|----------|
| 4' x 36" H – Level Rail Kit          | 73019536 | 73019688 | N/A      | N/A      |
| 5' x 36" H – Level Rail Kit          | 73019560 | 73019689 | N/A      | N/A      |
| 6' x 36" H – Level Rail Kit          | 73019603 | 73019690 | 73019587 | 73041503 |
| 8' x 36" H – Level Rail Kit          | 73019652 | 73019691 | 73019636 | 73041563 |
| 10' x 36" H – Level Rail Kit         | 73019517 | 73019687 | 73019510 | 73041504 |
| 6' x 36" H – 26°-38° Stair Rail Kit  | 73019599 | 73019600 | 73019593 | 73041505 |
| 8' x 36" H – 26°-38° Stair Rail Kit  | 73019648 | 73019649 | 73019642 | 73041506 |
| 10' x 36" H – 26°-38° Stair Rail Kit | 73019515 | N/A      | N/A      | N/A      |

\*Packed in clear see-through shrink “toughpack”; all other kits boxed.

## **2** FINYL LINE T-TOP – 1½" SQUARE BALUSTER RAIL KITS – 42" HEIGHT

| DESCRIPTION                         | WHITE    | EARTH    | DUNE     |
|-------------------------------------|----------|----------|----------|
| 4' x 42" H – Level Rail Kit         | 73019543 | N/A      | N/A      |
| 5' x 42" H – Level Rail Kit         | 73019567 | N/A      | N/A      |
| 6' x 42" H – Level Rail Kit         | 73019616 | 73019611 | 73041509 |
| 8' x 42" H – Level Rail Kit         | 73019665 | 73019660 | 73041510 |
| 6' x 42" H – 26°-38° Stair Rail Kit | 73019615 | N/A      | N/A      |
| 8' x 42" H – 26°-38° Stair Rail Kit | 73019664 | 73019662 | 73041512 |

## **2** FINYL LINE T-TOP – 1½" TURNED BALUSTER RAIL KITS – 36" HEIGHT

| DESCRIPTION                         | WHITE    | EARTH    | DUNE     |
|-------------------------------------|----------|----------|----------|
| 4' x 36" H – Level Rail Kit         | 73019537 | N/A      | N/A      |
| 6' x 36" H – Level Rail Kit         | 73019604 | 73019588 | 73041515 |
| 8' x 36" H – Level Rail Kit         | 73019653 | 73019637 | 73041516 |
| 10' x 36" H – Level Rail Kit        | 73019519 | 73019511 | 73041517 |
| 6' x 36" H – 26°-38° Stair Rail Kit | 73019601 | N/A      | N/A      |
| 8' x 36" H – 26°-38° Stair Rail Kit | 73019650 | 73019643 | 73041519 |

## 2 FINYL LINE T-TOP – ¾" ROUND ALUMINUM BALUSTER RAIL KITS – 36" HEIGHT

| DESCRIPTION                         | WHITE    | EARTH    | DUNE     |
|-------------------------------------|----------|----------|----------|
| 4' x 36" H – Level Rail Kit         | 73019535 | N/A      | N/A      |
| 6' x 36" H – Level Rail Kit         | 73019602 | 73019586 | 73041522 |
| 8' x 36" H – Level Rail Kit         | 73019651 | 73019635 | 73041523 |
| 10' x 36" H – Level Rail Kit        | 73019516 | 73019509 | 73041524 |
| 6' x 36" H – 26°-38° Stair Rail Kit | 73019598 | N/A      | N/A      |
| 8' x 36" H – 26°-38° Stair Rail Kit | 73019647 | 73019641 | 73041526 |

## 2 FINYL LINE DECK TOP – 1½" SQUARE BALUSTER RAIL KITS – 36" HEIGHT

| DESCRIPTION                         | WHITE    | EARTH    | DUNE     |
|-------------------------------------|----------|----------|----------|
| 6' x 36" H – Level Rail Kit         | 73019584 | 73019569 | 73041529 |
| 8' x 36" H – Level Rail Kit         | 73019633 | 73019618 | 73041530 |
| 10' x 36" H – Level Rail Kit        | 73019518 | N/A      | N/A      |
| 6' x 36" H – 26°-38° Stair Rail Kit | 73019581 | N/A      | N/A      |
| 8' x 36" H – 26°-38° Stair Rail Kit | 73019630 | 73019624 | 73041533 |

## 2 FINYL LINE DECK TOP – 1½" SQUARE BALUSTER RAIL KITS – 42" HEIGHT

| DESCRIPTION                         | WHITE    | EARTH    | DUNE     |
|-------------------------------------|----------|----------|----------|
| 6' x 42" H – Level Rail Kit         | 73019610 | 73019605 | 73041536 |
| 8' x 42" H – Level Rail Kit         | 73019659 | 73019654 | 73041537 |
| 8' x 42" H – 26°-38° Stair Rail Kit | 73019658 | 73019656 | 73041539 |

| INCLUDED IN KITS              | 4' LEVEL | 5' LEVEL | 6' LEVEL | 8' LEVEL | 10' LEVEL | 6' STAIR | 8' STAIR |
|-------------------------------|----------|----------|----------|----------|-----------|----------|----------|
| 1½" Balusters (Square/turned) | 9        | 11       | 13       | 18       | 20        | 12       | 16       |
| ¾" Balusters (Round aluminum) | 10       | 13       | 15       | 20       | 26        | 12       | 17       |
| Top Vinyl Rail                | 1        | 1        | 1        | 1        | 1         | 1        | 1        |
| Top Aluminum Stiffener        | 1        | 1        | 1        | 1        | 1         | 1        | 1        |
| Bottom Vinyl Rail             | 1        | 1        | 1        | 1        | 1         | 1        | 1        |
| Bottom Aluminum Stiffener     | 1        | 1        | 1        | 1        | 1         | 1        | 1        |
| Bracket Kit (2 top, 2 bottom) | 1        | 1        | 1        | 1        | 1         | 1        | 1        |
| Support Foot                  | N/A      | N/A      | N/A      | N/A      | 1         | N/A      | N/A      |



# SKU LIST

## 2 FINYL LINE DECK TOP – 1½" TURNED BALUSTER RAIL KITS – 36" HEIGHT

| DESCRIPTION                         | WHITE    | EARTH    | DUNE     |
|-------------------------------------|----------|----------|----------|
| 6' x 36" H – Level Rail Kit         | 73019585 | 73019570 | 73041542 |
| 8' x 36" H – Level Rail Kit         | 73019634 | 73019619 | 73041543 |
| 10' x 36" H – Level Rail Kit        | 73019508 | N/A      | N/A      |
| 6' x 36" H – 26°-38° Stair Rail Kit | 73019582 | N/A      | N/A      |
| 8' x 36" H – 26°-38° Stair Rail Kit | 73019631 | 73019625 | 73041546 |

## 2 FINYL LINE DECK TOP – ¾" ROUND ALUMINUM BALUSTER RAIL KITS – 36" HEIGHT

| DESCRIPTION                         | WHITE    | EARTH    | DUNE     |
|-------------------------------------|----------|----------|----------|
| 6' x 36" H – Level Rail Kit         | 73019583 | 73019568 | 73041549 |
| 8' x 36" H – Level Rail Kit         | 73019632 | 73019617 | 73041550 |
| 10' x 36" H – Level Rail Kit        | 73019507 | N/A      | N/A      |
| 6' x 36" H – 26°-38° Stair Rail Kit | 73019580 | N/A      | N/A      |
| 8' x 36" H – 26°-38° Stair Rail Kit | 73019629 | 73019623 | 73041553 |

| INCLUDED IN KITS              | 6' LEVEL | 8' LEVEL | 10' LEVEL | 6' STAIR | 8' STAIR |
|-------------------------------|----------|----------|-----------|----------|----------|
| 1½" Balusters (Square/turned) | 13       | 18       | 20        | 12       | 16       |
| ¾" Balusters (Round aluminum) | 15       | 20       | 26        | 12       | 17       |
| Top Vinyl Rail                | 1        | 1        | 1         | 1        | 1        |
| Top Aluminum Stiffener        | 1        | 1        | 1         | 1        | 1        |
| Bottom Vinyl Rail             | 1        | 1        | 1         | 1        | 1        |
| Bottom Aluminum Stiffener     | 1        | 1        | 1         | 1        | 1        |
| Bracket Kit (2 top, 2 bottom) | 1        | 1        | 1         | 1        | 1        |
| Support Foot                  | N/A      | N/A      | 1         | N/A      | N/A      |

### 3 FINYL LINE T-TOP BRACKET KITS

| DESCRIPTION  | WHITE    | EARTH    | DUNE     |
|--|----------|----------|----------|
| Level Bracket Set (2 top & 2 bottom brackets)              | 73019685 | 73019681 | 73041560 |
| Stair Bracket Set (2 top & 2 bottom brackets)              | 73019686 | 73019682 | 73041561 |
| Angle Bracket Set (1 pair – cut to desired angle)          | 73021923 | 73021924 | 73041562 |
| Swivel Level-Angle Bracket Set (2 top & 2 bottom brackets) | 73018805 | N/A      | N/A      |
| Swivel Stair Bracket Set (2 top & 2 bottom brackets)       | 73018804 | N/A      | N/A      |

### 3 FINYL LINE DECK TOP BRACKET KITS

| DESCRIPTION                                       | WHITE    | EARTH    | DUNE     |
|---|----------|----------|----------|
| Level Bracket Set (2 top & 2 bottom brackets)     | 73019670 | 73019666 | 73041554 |
| Stair Bracket Set (2 top & 2 bottom brackets)     | 73019671 | 73019667 | 73041555 |
| Angle Bracket Set (1 pair – cut to desired angle) | 73021926 | 73021927 | 73041556 |

### 3 FINYL LINE COLUMN & ANGLE ADAPTERS

| DESCRIPTION                                     | WHITE    | EARTH    | DUNE     |
|---|----------|----------|----------|
| 8" Round Column Adapter (2 pack)                | 73019680 | 73019674 | 73041557 |
| 45° Angle Adapter (1 top & 1 bottom brackets)   | 73019679 | 73019673 | 73041558 |
| 22.5° Angle Adapter (1 top & 1 bottom brackets) | 73019678 | 73019672 | 73041559 |

4 For gate options, see our Crossover gates on page 91.

5 To see all the LED lighting options and details, see our Crossover LED Lighting on page 90.



# VINYL CLAD ALUMINUM







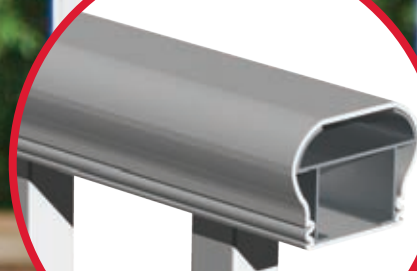
**Titan Pro Rail** was created with the installer in mind. A Titan rail section assembles in minutes and is ideal for residential and commercial applications. Metal-to-metal connections add to the sound engineering that enables easy and safe installations. Titan vinyl-clad aluminum railing is manufactured using the highest quality materials to meet your performance and building requirements.





# FEATURE SPOTLIGHT

1



1

## TOP RAIL PROFILE

The top rail profile is designed to meet the International Residential Code for stair rail graspability\* – no secondary hand rail needed in non-continuous applications!

2

## PRE-ASSEMBLED POST

Extremely strong, heavy duty 3.15" x 3.15" square galvanized interior post extends above the top brackets, providing a metal-to-metal connection between the brackets and posts. Posts have a 1/4" x 5" x 5" square flange plate welded to the upright and are hot-dip galvanized. Flange posts can be mounted to almost any surface.

3

## PRE-INSTALLED BRACKETS

Pre-attached brackets save valuable installation time and ensure consistent code-compliant bottom spacing and finished rail height. Titan Pro End, Mid, and Corner posts are supplied pre-assembled for 36" or 42" high railing applications. The blank post can be utilized in both stair and level applications if the pre-assembled post is not ideal. For stair applications using the blank post, our no-cut stair brackets make installation easy, saving you time!

\*The Titan Pro Rail System exceeds U.S. building code requirements. Always consult your local Building Code Department for applicable regulations and product acceptance. For additional information on Titan Pro Rail or other RDI products visit [www.rdirail.com](http://www.rdirail.com) or contact our Customer Service Department at (877) 420-7245.





2



3





# HOW TO ORDER

1

## CHOOSE A POST

Titan Pro posts are available in white only. For installations using our Earth color options, select your post sleeves and accessories in the color of your choice in Step 4 from our Crossover Product selection (page 88).



Blank Posts



Mid Posts



Corner Posts



End Posts

Post kits include steel post insert, vinyl sleeve, brackets with covers (except blank posts), trim ring, and two vinyl shims. Titan Posts with sleeve are 3.4" x 3.4" square and bottom brackets are set for a 2" bottom space.

2

## CHOOSE A POST CAP

Titan Post Caps are designed to fit on Titan posts.



Decorative Cap



Flat Cap

3

## CROSSOVER PRODUCT POST OPTIONS

If you're installing Titan Pro using existing 4" x 4" or 6" x 6" wood posts, choose your level & stair sections (step 4), & then purchase a bracket set for each rail section (see step 5). Finally, choose your finishing touches from our **CROSSOVER PRODUCT** (page 88).

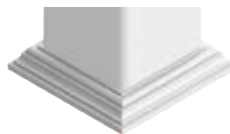
a

### CHOOSE A POST SLEEVE



b

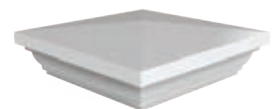
### CHOOSE A TRIM RING\*



*\*Only the Low Profile or 4-piece Adjustable trim ring provide sufficient clearance for Titan bottom brackets*

c

### CHOOSE A POST CAP



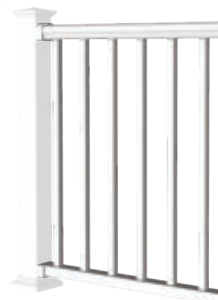
4

## CHOOSE YOUR LEVEL AND STAIR SECTIONS

Titan kits available with 1 1/4" square balusters. Brackets for each section need to be purchased separately if not using a Titan post. Available for a 36" finished height (with 2" bottom space) and available in 42" commercial height (with 2" bottom space).

### Level Kits

6'  
8'  
10'



### Stair Kits

6'  
8'



5

### BRACKET KITS

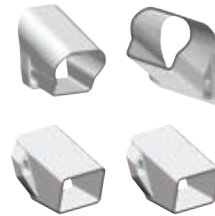
Titan Pro posts come with pre-attached level brackets on all but blank posts. If using Titan blank posts (for stair or level) or non-Titan posts, bracket kits must be purchased separately.



Level Bracket Kit



Stair Bracket Kit



No-Cut Stair Bracket Kit



45° Bracket Adapter



22.5° Bracket Adapter



Round Column Adapter  
for 8" Columns



Bracket Jig  
for 8" Columns

6

### CHOOSE YOUR GATE KIT

A standard gate kit (36" wide opening) is available for 36" finished rail height, 1¼" square balusters, white only. Custom width gates are available in 36" and 42" finished heights with multiple color and baluster options. Custom width gates cannot exceed 48" in width. Gate hardware sold separately. See page 91 for all Crossover gate kit options.



Standard Gate Kit

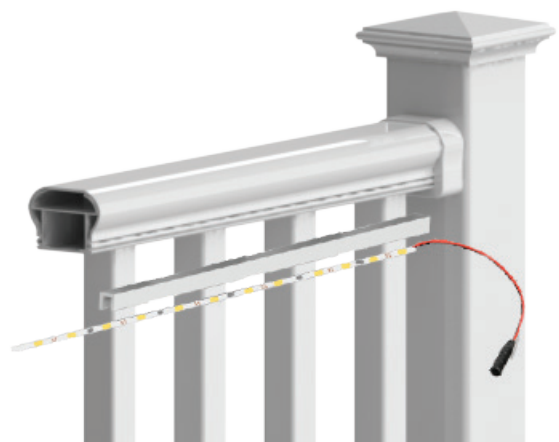


Custom Gate Kit

7

### CHOOSE YOUR LIGHTING OPTIONS

Adding under-rail lighting gives a unique look and creates ambiance for your deck. Installs quickly and easily with our new plug and play wiring system, and attaches securely with its strong adhesive backing. Simply install the light strip into the light channel and use the supplied adhesive to adhere to your top rail. Solar and LED post caps are available for use with 4" and 5" posts. See page 90 for all the lighting options.





# SKU LIST

## 1 TITAN PRO RAIL – POST KITS – with 2" BOTTOM SPACE

| DESCRIPTION   | WHITE    |
|---|----------|
| 3.4" x 3.4" x 38.125" Blank Post Assembly for 36" Railing Height                | 73018657 |
| 3.4" x 3.4" x 38.125" End-Post Assembly for 36" Railing Height                  | 73018662 |
| 3.4" x 3.4" x 38.125" Mid-Post Assembly for 36" Railing Height                  | 73018664 |
| 3.4" x 3.4" x 38.125" Corner Post Assembly for 36" Railing Height               | 73018660 |
| 3.4" x 3.4" x 44.125" Blank Post Assembly for 42" Railing Height                | 73018658 |
| 3.4" x 3.4" x 44.125" End-Post Assembly for 42" Railing Height                  | 73018663 |
| 3.4" x 3.4" x 44.125" Mid-Post Assembly for 42" Railing Height                  | 73018665 |
| 3.4" x 3.4" x 44.125" Corner Post Assembly for 42" Railing Height               | 73018661 |
| 3.4" x 3.4" x 50.125" Blank Post Assembly for 42" Railing Height – (For stairs) | 73018659 |

*Post kits include steel post insert, vinyl sleeve, brackets with covers (except blank posts), trim ring, and two vinyl shims.*

## 2 TITAN PRO RAIL – ACCESSORIES

| DESCRIPTION         | WHITE    |
|---------------------|----------|
| Flat Post Cap       | 73018242 |
| Decorative Post Cap | 73018240 |

*Titan post caps are designed to fit Titan posts only.*

3 For other post options (including 4" x 4", 5" x 5", or 6" x 6", and structural posts) and additional accessories if not using a Titan post, see our Crossover Product section on page 88.

#### 4 TITAN PRO RAIL – RAIL KITS – 1 1/4" SQUARE BALUSTER

| DESCRIPTION                         | WHITE    | EARTH    |
|-------------------------------------|----------|----------|
| 6' x 36" H – Level Rail Kit         | 73018163 | 73018165 |
| 8' x 36" H – Level Rail Kit         | 73018012 | 73018171 |
| 10' x 36" H – Level Rail Kit        | 73018157 | 73018159 |
| 6' x 36" H – 32°-38° Stair Rail Kit | 73018200 | 73018202 |
| 8' x 36" H – 32°-38° Stair Rail Kit | 73018207 | N/A      |
| 6' x 42" H – Level Rail Kit         | 73018167 | 73018168 |
| 8' x 42" H – Level Rail Kit         | 73018173 | 73018174 |
| 10' x 42" H – Level Rail Kit        | 73018161 | 73018162 |
| 6' x 42" H – 32°-38° Stair Rail Kit | 73018204 | 73018205 |
| 8' x 42" H – 32°-38° Stair Rail Kit | 73018211 | N/A      |

Brackets not included in rail kits. Titan posts come with pre-attached brackets for ease of install for level applications; if not using Titan posts, level brackets must be purchased separately from your rail kit. Stair brackets sold separately.

| INCLUDED IN KITS          | 6' LEVEL | 8' LEVEL | 10' LEVEL | 6' STAIR | 8' STAIR |
|---------------------------|----------|----------|-----------|----------|----------|
| 1 1/4" Square Balusters   | 14       | 19       | 24        | 11       | 15       |
| Top Vinyl Rail            | 1        | 1        | 1         | 1        | 1        |
| Top Aluminum Stiffener    | 1        | 1        | 1         | 1        | 1        |
| Bottom Vinyl Rail         | 1        | 1        | 1         | 1        | 1        |
| Bottom Aluminum Stiffener | 1        | 1        | 1         | 1        | 1        |
| Support Foot              | 1        | 1        | 1         | 0        | 0        |

#### 5 TITAN PRO RAIL – BRACKET ACCESSORIES

| DESCRIPTION  | WHITE    | EARTH    |
|--|----------|----------|
| Level Bracket Kit – 2 Pair (4 steel brackets & 4 vinyl bracket covers) | 73018011 | 73018228 |
| Stair Bracket Kit – 2 Pair (4 steel brackets & 4 vinyl bracket covers) | 73018229 | 73018232 |
| No-Cut Stair Bracket Kit – 2 Pair                                      | 73018230 | 73018231 |
| 45° Bracket Adapter Kit – 1 Pair                                       | 73018225 | 73018226 |
| 22.5° Bracket Adapter Kit – 1 Pair                                     | 73018223 | 73018224 |
| Round Column Adapter Kit – 1 Pair                                      | 73018251 | N/A      |
| Level Bracket Attachment Jig (No color)                                | 73018227 |          |
| 2-Piece Trim Ring*   | 73018915 |          |

\*Titan posts include 2-piece trim ring; if a replacement is needed, this item can be ordered.

6 For gate options, see our Crossover Gates on page 91.

7 To see all the LED lighting options and details, see our Crossover LED Lighting on page 90.



# ADA HAND RAIL

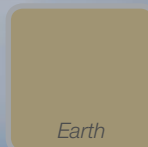


**VINYL HAND RAIL™** is an ADA compliant\* graspable hand rail that provides added safety and security to any stair or ramp. The key to its success is its simplicity; we've made the daunting task of installation easy with our step-by-step illustrated instructions and selection of versatile components. Vinyl clad aluminum Hand Rail features complete metal-to-metal connections for maximum strength. Our vinyl clad aluminum Hand Rail system can be joined in many different configurations to provide ADA compliant graspability on stairs or ramps.

*\*Always consult your local Building Code Department for applicable regulations and product acceptance.*



# VINYL HAND RAIL™





# VINYL HAND RAIL

## SELECT YOUR COMPONENTS

ADA Vinyl Hand Rail is a secondary hand rail to be installed in addition to a primary railing installation.

1

### LINEALS

ADA Vinyl Hand Rail lineals come in lengths of 80", 104" and 120".



Vinyl Clad Aluminum Hand Rail



180° Return Loop

2

### MOUNTING BRACKETS

Select from a variety of mounting options for your installation. A mounting bracket is required every 6' of Hand Rail lineal. Hardware to attach mounting brackets to lineals is included; hardware to attach to posts is not included.



Mounting Bracket



Inside Corner Mounting Bracket



90° Post Return

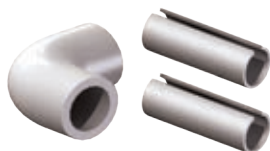


Straight Wall Return

3

### HAND RAIL JOINERS

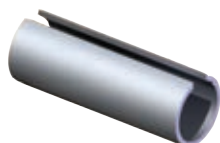
A variety of Hand Rail joiners help create the exact layout for your ADA hand rail that you need.



90° Corner



Adjustable Joiner



Straight Joiner

4

### HAND RAIL ACCESSORIES

Finish your project with joint ring to hide joins and end cap for a finished look on lineals.



Joint Ring



End Cap

# SKU LIST

## 1 VINYL HAND RAIL – LINEALS

| DESCRIPTION                        | WHITE    | EARTH    |
|------------------------------------|----------|----------|
| 120" Vinyl Clad Aluminum Hand Rail | 73018380 | 73018808 |
| 104" Vinyl Clad Aluminum Hand Rail | 73018377 | 73018806 |
| 80" Vinyl Clad Aluminum Hand Rail  | 73018381 | 73018810 |
| 180° Return Loop                   | 73018392 | 73018818 |

## 2 VINYL HAND RAIL – MOUNTING BRACKETS

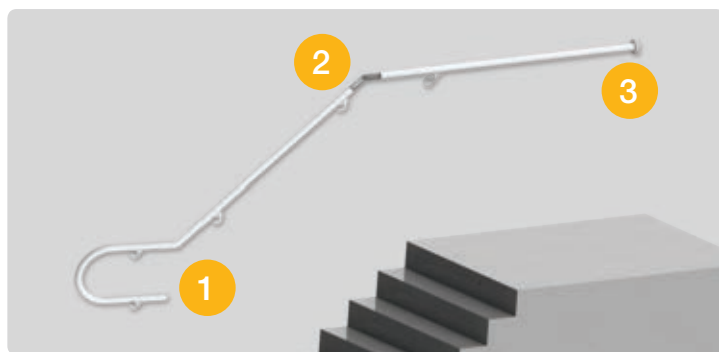
| DESCRIPTION                    | WHITE    | EARTH    |
|--------------------------------|----------|----------|
| Mounting Bracket               | 73018384 | 73018812 |
| Inside Corner Mounting Bracket | 73018394 | 73018820 |
| 90° Post Return                | 73018398 | 73018824 |
| Straight Wall Return           | 73018402 | 73018826 |

## 3 VINYL HAND RAIL – JOINERS

| DESCRIPTION                           | WHITE    | EARTH    |
|---------------------------------------|----------|----------|
| 90° Corner                            | 73018386 | 73018814 |
| Internal Adjustable Joiner (No color) | 73018382 |          |
| Internal Straight Joiner (No color)   | 73018399 |          |

## 4 VINYL HAND RAIL – ACCESSORIES

| DESCRIPTION | WHITE    | EARTH    |
|-------------|----------|----------|
| Joint Ring  | 73018396 | 73018822 |
| End Cap     | 73018390 | 73018816 |



- 1 180° return loop returns the rail back past the post center line to meet ADA graspability requirements.
- 2 Our internal adjustable joiner allows you to create the angle you need from 0° to 90°.
- 3 Cast aluminum straight return terminates railing to any wall or post. Includes our unique snap-fit vinyl cover to conceal fasteners.

- 1 Internal joiners provide a continuous metal-to-metal connection for our Hand Rail lineals, and coupled with the joint ring, create a smooth, finished installation.
- 2 90° post return creates a termination at any post or wall.
- 3 90° corner creates a smooth corner where you need it, eliminating miter cuts.

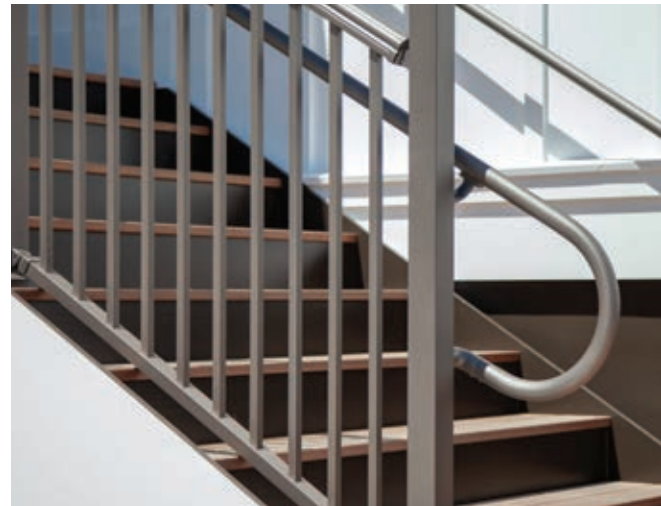
*Hardware to attach mounting brackets to surface not included.*



# ADA HAND RAIL

**ALUMINUM HAND RAIL™** is the perfect solution for applications where durable, low-maintenance, graspable metal hand rail is desired. Strong, metal-to-metal connections ensure dependable safety and security for any stair or ramp that requires ADA code compliance.\*

*\*Always consult your local Building Code Department for applicable regulations and product acceptance.*



# ALUMINUM HAND RAIL™





# ALUMINUM HAND RAIL

## SELECT YOUR COMPONENTS

ADA Aluminum Hand Rail is a secondary hand rail to be installed in addition to a primary railing installation.

1

### LINEALS

ADA Aluminum Hand Rail lineals come in lengths of 80", 104", and 120".



Aluminum Hand Rail



180° Return Loop

2

### MOUNTING BRACKETS

Select from a variety of mounting options for your installation. A mounting bracket is required every 6' of Hand Rail lineal. Hardware to attach mounting brackets to steel or aluminum posts included and hardware for vinyl posts included in brackets indicating use for vinyl posts.



Mounting Bracket



Mounting Bracket for Vinyl Posts



Inside Corner Mounting Bracket



90° Post Return



90° Post Return for Vinyl Posts



Straight Wall Return

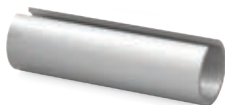
3

### HAND RAIL JOINERS

Aluminum Hand Rail offers our unique external joiner for adjustable angles without miter cuts. You can also use our Vinyl Hand Rail internal straight joiner with the Aluminum Hand Rail System.



Aluminum Hand Rail Adjustable Joiner



Straight Joiner



90° Corner

4

### HAND RAIL ACCESSORIES

The matching finish of our end cap and joint ring adds a finished look to your hand rail. Spacer Block is perfectly sized to help block out mounting brackets.



End Cap



Joint Ring



Spacer Block

# SKU LIST

## 1 ALUMINUM HAND RAIL – LINEALS

| DESCRIPTION                 | WHITE    | SATIN BLACK | HAMMERED BRONZE | AGED BRONZE |
|-----------------------------|----------|-------------|-----------------|-------------|
| 1.5" x 80" Aluminum Lineal  | 73019171 | 73019169    | 73019170        | 73041311    |
| 1.5" x 104" Aluminum Lineal | 73019175 | 73019173    | 73019174        | 73041309    |
| 1.5" x 120" Aluminum Lineal | 73019179 | 73019177    | 73019178        | 73041310    |
| 180° Return Loop            | 73019227 | 73019229    | 73019228        | 73041325    |

## 2 ALUMINUM HAND RAIL – MOUNTING BRACKETS

| DESCRIPTION                      | WHITE    | SATIN BLACK | HAMMERED BRONZE | AGED BRONZE |
|----------------------------------|----------|-------------|-----------------|-------------|
| Mounting Bracket                 | 73019151 | 73019149    | 73019150        | 73041323    |
| Mounting Bracket for Vinyl Posts | N/A      | 73042847    | N/A             | N/A         |
| Inside Corner Mounting Bracket   | 73041318 | 73041317    | N/A             | 73041315    |
| 90° Post Return                  | 73019147 | 73019145    | 73019146        | 73041324    |
| 90° Post Return for Vinyl Posts  | N/A      | 73042848    | N/A             | N/A         |
| Straight Wall Return             | 73019155 | 73019153    | 73019154        | 73041326    |

## 3 ALUMINUM HAND RAIL – JOINERS

| DESCRIPTION                         | WHITE    | SATIN BLACK | HAMMERED BRONZE | AGED BRONZE |
|-------------------------------------|----------|-------------|-----------------|-------------|
| External Adjustable Joiner          | 73019167 | 73019165    | 73019166        | 73041314    |
| Internal Straight Joiner (No color) | 73018399 |             |                 |             |
| 90° Corner                          | 73019163 | 73019161    | 73019162        | 73041312    |

## 4 ALUMINUM HAND RAIL – ACCESSORIES

| DESCRIPTION   | WHITE    | SATIN BLACK | HAMMERED BRONZE | AGED BRONZE |
|---------------|----------|-------------|-----------------|-------------|
| End Cap       | 73019159 | 73019157    | 73019158        | 73041313    |
| Joint Ring    | 73041322 | 73041321    | N/A             | 73041319    |
| Spacer Block* | 73041469 | 73042849    | N/A             | 73043094    |

*Spacer Block is 1/4" thick and used to help block out brackets for narrower, 2" Over-the-Top in-line Avalon posts installed between standard 2.5" Avalon posts.*



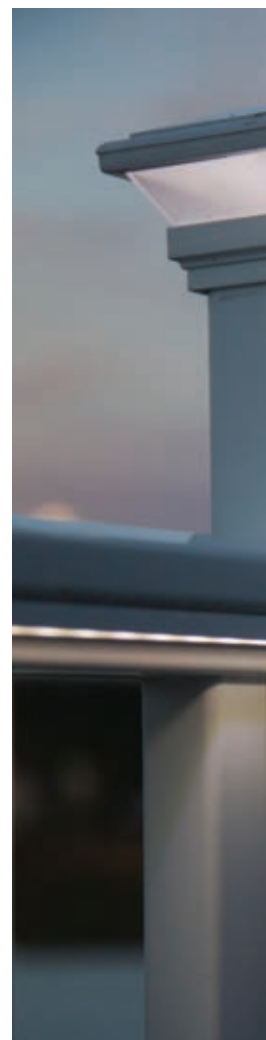
Spacer Block shown in Satin Black mounted behind mounting bracket.



New Inside Corner Mounting Bracket is sized perfectly for aluminum posts.



# RAILING ACCESSORIES



**CROSSOVER PRODUCT™** includes Post Sleeves and Wraps, Structural Posts, Porch Posts, Lighted Accessories, Gates, Post Caps and Trim Rings, all of which are compatible with Endurance, Finyl Line, Titan Pro Rail, Avalon Aluminum Railing and Metal Works Excalibur\* systems.

Decorative post caps and trim rings provide a finished look to your installation. Lighted accessories give you the option of either solar or LED post caps to add a bit of ambiance to your deck. Our versatile gate kits will complement any project.

*\*Excalibur and Avalon Aluminum Railing both include their own system of posts, but if you want a mix-and-match look, Crossover structural posts or 4" x 4" wooden posts (sleeved with vinyl post sleeves, Crossover aluminum sleeves, or Transform post sleeves) can be used with both systems. Excalibur and Avalon posts include a trim ring and post cap specifically sized for the posts for each system.*



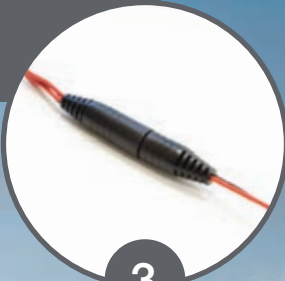
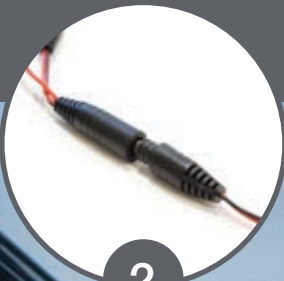
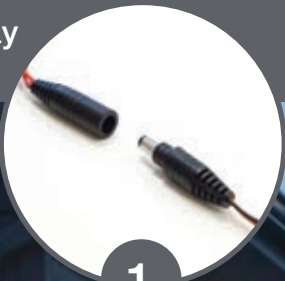
# crossover PRODUCT™





# LED LIGHTING

Easy plug-and-play installation!



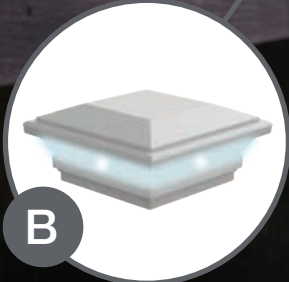
Bluetooth capable transformer can be controlled with your smartphone!

A

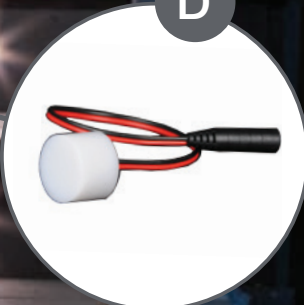
C



B



D



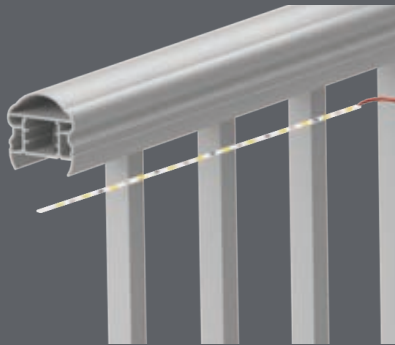
Original Rail shown with Under-Rail Lighting (A), Contemporary LED Post Cap (B), LED Dome Lights, (C) and LED Flush-Deck Lights (D).

# crossover PRODUCT™

We've made adding lighting to your deck easy! With our plug-and-play LED lighting system, there's no need for cutting and splicing wires. All splitters and harnesses connect with our LED accessories easily. Under-Rail light strips have an adhesive backing and come in lengths of 92". They can be adhered to the underside of your Transform or Avalon top rail. If using Finyl Line, Titan, or Original rail, the LED under-rail light strip is inserted into the under-rail light channel which is then adhered to the top rail using provided adhesive backing. LED lighted post caps are offered exclusively color matched and to fit Transform posts, Avalon posts, and Metal Works Excalibur posts. Additional Crossover LED accessories (post cap, dome light, side/stair light) in White can be used with Finyl Line, Titan Pro Rail, or Original Rail.



Under-Rail Lighting with Transform



Under-Rail Lighting with Avalon



Under-Rail Lighting + channel with Original Rail

Transform LED Post Caps – page 23

Avalon LED Post Caps – page 33





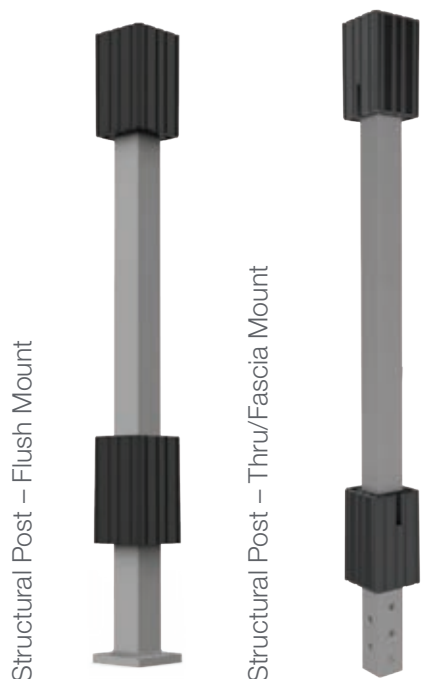
# SELECTING POSTS

1

SELECT A POST

1a

CHOOSE A STEEL STRUCTURAL POST



Structural posts come for finished railing heights of 36" and 42" in both flush and thru/fascia mount.

1b

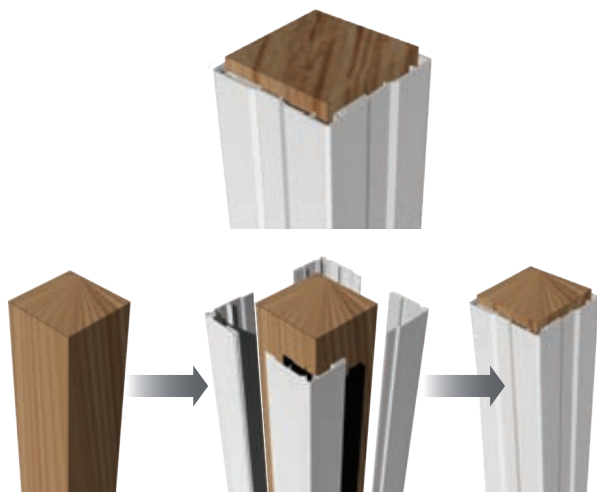
CHOOSE A VINYL POST SLEEVE



Turned post sleeve must be used with a steel structural post.

1b

CHOOSE A VINYL POST WRAP TO GO OVER YOUR STEEL STRUCTURAL POST OR EXISTING 4" X 4" OR 6" X 6" POSTS



Post Wraps are covered by US patent D521,656S.

1c

CHOOSE A CROSSOVER ALUMINUM POST OR SLEEVE OPTION



4 1/4" x 4 1/4" aluminum posts can either sleeve over an existing 4" x 4" treated post or be installed with a mounting kit as structural post.



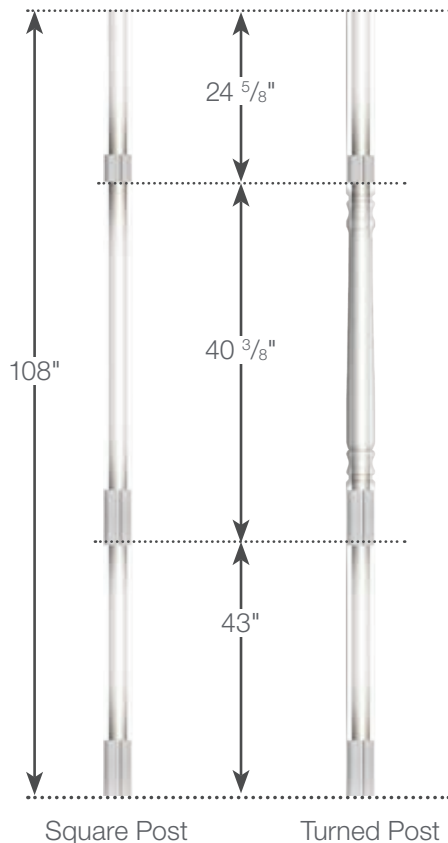
2

## SELECT A PORCH POST

2a

### VINYL PORCH POSTS (BASE MOUNTING KIT SOLD SEPARATELY)

Porch Posts come in heights of 108" and both 4" x 4" or 5" x 5" and load capacities of 2,500 lbs or 5,000 lbs.



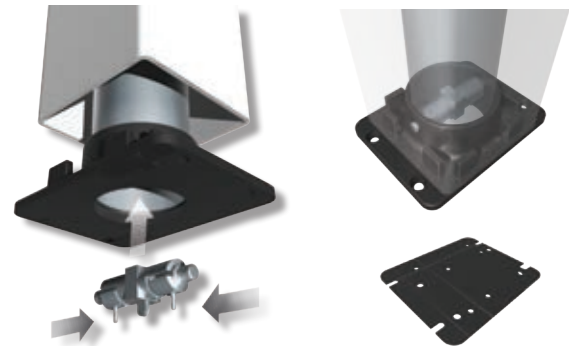
2b

### CHOOSE A VINYL POST MOUNTING KIT (REQUIRED FOR PORCH POSTS)

Choose from the wind uplift base (prevents wind uplift up to 2,800 lbs) or standard base.



Standard Base Kit



Wind Uplift Base Kit\*

\*The Wind Uplift Kit Base is shown in black for illustration purposes only. The PVC gasket prevents corrosion of the base plate and accommodates all Base Kits.

2c

### ALUMINUM PORCH POSTS (BASE MOUNTING KIT SOLD SEPARATELY)

4 1/4" x 4 1/4" x 108" Aluminum posts sleeves can be used as porch posts (5,000 lb load capacity); two mounting kits will be needed in this application.



2d

### CHOOSE AN ALUMINUM POST MOUNTING KIT (REQUIRED FOR ALUMINUM PORCH POSTS)

Two mounting kits are required for aluminum post sleeves being used as porch posts; mounting post kit includes mounting plates and trim.



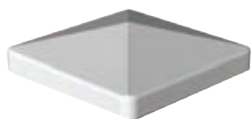


# SELECTING ACCESSORIES

3

## CHOOSE YOUR POST CAPS

Choose from a selection of decorative post caps or for some ambience, choose a solar or low-voltage post cap.



Flat Post Cap



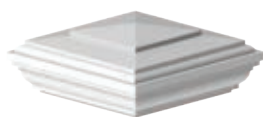
New England Post Cap



4" Elite Post Cap



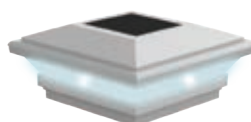
6" Elite Post Cap



Heritage Post Cap



Contemporary Post Cap



Contemporary Solar Post Cap

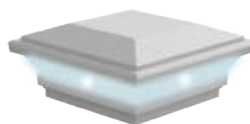
4

## CHOOSE YOUR WIRED LIGHTING ACCESSORIES

Select a transformer, wiring, splitters for use with our lighted post caps. Or increase the wow factor of your deck at night with under-rail lighting. To determine the amount of power needed, simply add up the wattage of all your LED accessories and if less than 50W, then one transformer is needed. If more than 50W, a second transformer will be needed to power all LED accessories.



Transformer (50W)  
with Bluetooth capability



Contemporary LED Post Cap (0.80W)



New England LED Post Cap (0.80W)



2-Way Splitter



5-Way Splitter



92" Under-Rail Light  
(3W)



Dome Light (0.80W)



Side/Stair Light (0.40W)



Lighting wire – available  
in 2', 5', 7' or 9' lengths.



Under-Rail Light Channel  
(92" length)



Flush Deck Light (0.40W)

5

## CHOOSE YOUR TRIM RINGS

For a finished look, install a post trim! Coordinate the style with your post cap for a look that fits your aesthetics.



Elite Post Trim Ring



Heritage Trim Ring\*



Low Profile Trim Ring



5" 2-Piece Trim Ring



4-Piece Elite Trim Ring\*\*

\*Does not allow for a 2" bottom space when used with Endurance Original Rail.

\*\*Adjustable Elite 4-Piece Trim Ring can be installed at any time and can be adjusted to fit posts from 3½" x 3½" to 6½" x 6½" without nails, screws or glue. 4-Piece Elite Trim Ring Required for Wind Uplift Base Kit.

6

## CHOOSE YOUR GATE KIT

A standard gate kit (36" wide opening) is available for 36" finished rail height, 1¼" square balusters, white only. Custom width gates are available in 36" and 42" finished heights with multiple color and baluster options. Custom width gates cannot exceed 48" in width. Gate hardware sold separately. See page 91 for all Crossover gate kit options.



Standard Gate Kit



Custom Gate Kit

7

## CHOOSE YOUR GATE HARDWARE

Choose your gate hardware, available in black or white.



Standard Wrap Hinge Pair



GardDog™ Locking Latch 2-Sided



Gravity Latch



24" Drop Rod



## 1a CROSSOVER – STRUCTURAL POSTS

| DESCRIPTION   |          |
|---|----------|
| Structural Post for 36" Rail Height – Flush Mount       | 73019022 |
| Structural Post for 36" Rail Height – Thru/Fascia Mount | 73019023 |
| Structural Post for 42" Rail Height – Flush Mount       | 73019024 |
| Structural Post for 42" Rail Height – Thru/Fascia Mount | 73019025 |

## 1b CROSSOVER – VINYL POST SLEEVES & POST WRAPS

| DESCRIPTION   | WHITE    | EARTH    | DUNE     |
|---|----------|----------|----------|
| 4" x 4" x 39" Post Sleeve (Unit pack of 84)                 | 61109087 | 61109644 | 73041475 |
| 4" x 4" x 39" Post Sleeve (Unit pack of 22)                 | 73019260 | N/A      | N/A      |
| 4" x 4" x 45" Post Sleeve                                   | 61109088 | 61109645 | 73041476 |
| 4" x 4" x 54" Post Sleeve                                   | 73019029 | N/A      | N/A      |
| 4" x 4" x 100" Post Sleeve                                  | 73012479 | N/A      | N/A      |
| 4" x 4" x 108" Post Sleeve                                  | 61109090 | 61109647 | 73041477 |
| 4" x 4" x 120" Post Sleeve                                  | 73006803 | N/A      | N/A      |
| 4" x 4" x 48" Turned Post Sleeve (Requires structural post) | 73018760 | N/A      | N/A      |
| 5" x 5" x 39" Post Sleeve                                   | 73043921 | N/A      | N/A      |
| 5" x 5" x 45" Post Sleeve                                   | 73043922 | N/A      | N/A      |
| 5" x 5" x 108" Post Sleeve                                  | 73043923 | N/A      | N/A      |
| 5" x 5" Post Inserts*                                       | 73019139 |          |          |
| 6" x 6" x 54" Post Sleeve                                   | 73018734 | N/A      | N/A      |
| 6" x 6" x 108" Post Sleeve                                  | 73018731 | 73018732 | 73041478 |
| 4" x 4" x 96" – 4 Piece Post Wrap**                         | 73018473 | 73018474 | 73041479 |
| 4" x 4" x 120" – 4 Piece Post Wrap**                        | 73018007 | 73018476 | 73041480 |
| 6" x 6" x 96" – 4 Piece Post wrap**                         | 73018478 | 73018479 | 73041481 |
| 6" x 6" x 120" – 4 Piece Post Wrap**                        | 73018008 | 73018481 | 73041482 |

\*Post inserts are used when sleeving 4" x 4" wooden posts or Crossover structural posts.

\*\*4" x 4" Post Wrap can wrap a post from 3 3/8" square to 4 1/8" square and 6" x 6" Post Wrap can wrap a post from 5 7/16" square to 6 1/8" square.

# SKU LIST

## 1c CROSSOVER – ALUMINUM POSTS

| DESCRIPTION   | WHITE    | SATIN BLACK | AGED BRONZE |
|---|----------|-------------|-------------|
| 2½" x 2½" x 39" Post                                    | 73043054 | 73043046    | 73043050    |
| 2½" x 2½" x 45" Post                                    | 73043055 | 73043047    | 73043051    |
| 2½" x 2½" x 45" Heavy Duty Post                         | 73043056 | 73043048    | 73043052    |
| 2½" x 2½" x 60" Heavy Duty Post                         | 73043057 | 73043049    | 73043053    |
| 4¼" x 4¼" x 39" Post                                    | 73041379 | 73041378    | 73041376    |
| 4¼" x 4¼" x 45" Post                                    | 73041383 | 73041382    | 73041380    |
| 4¼" x 4¼" x 108" Porch Post – 5,000 lb capacity         | 73041375 | 73041374    | 73041372    |
| Flat Post Cap for 4¼" x 4¼" Posts*                      | 73041367 | 73041366    | 73041364    |
| Trim Ring for 4¼" x 4¼" Posts                           | 73041371 | 73041370    | 73041368    |
| Mounting Kit for 4¼" x 4¼" Posts (Includes trim ring)** | 73041363 | 73041362    | 73041360    |

2½" Aluminum Posts include pre-attached base plate, 2-piece trim ring, and post cap. 4¼" Aluminum Posts can be used as post sleeves or as structural post with mounting kit (sold separately). Mounting kit, trim ring, and post cap for 4¼" Aluminum Posts sold separately.

\*Flat Post Cap not needed if running deck board over the top of your posts.

\*\*Mounting kit includes 2-piece trim, mounting plate, and hardware. Trim ring also sold separately if using post as sleeve.

## 2a CROSSOVER – VINYL PORCH POSTS (REQUIRES POST MOUNTING KIT)

| DESCRIPTION                                     | WHITE    | EARTH    | DUNE     |
|---|----------|----------|----------|
| 4" x 4" x 108" Square Post – 2,500 lb. Capacity | 73018767 | N/A      | N/A      |
| 4" x 4" x 108" Turned Post – 2,500 lb. Capacity | 73018752 | N/A      | N/A      |
| 5" x 5" x 108" Turned Post – 5,000 lb. Capacity | 73018010 | 73018741 | 73041483 |
| 5" x 5" x 108" Square Post – 5,000 lb. Capacity | 73018769 | N/A      | N/A      |

## 2b CROSSOVER – POST MOUNTING KITS (REQUIRED FOR VINYL PORCH POSTS)

| DESCRIPTION  |          |
|--|----------|
| 4" Standard Base Kit (Includes 1 bottom and 1 top mounting plate)                                | 73018005 |
| 4" Wind Uplift Base Kit* (Includes 1 bottom, 1 top mounting plate, 2 pistons, and 2 PVC gaskets) | 73018089 |
| 5" Standard Base Kit (Includes 1 bottom and 1 top mounting plate)                                | 73018006 |
| 5" Wind Uplift Base Kit* (Includes 1 bottom, 1 top mounting plate, 2 pistons, and 2 PVC gaskets) | 73018090 |

\*Wind uplift base kit prevents wind uplift up to 2,800 lbs.

## 2c CROSSOVER – ALUMINUM PORCH POST (REQUIRES 2 POST MOUNTING KITS)

| DESCRIPTION                                     | WHITE    | SATIN BLACK | AGED BRONZE |
|---|----------|-------------|-------------|
| 4¼" x 4¼" x 108" Porch Post – 5,000 lb capacity | 73041375 | 73041374    | 73041372    |

## 2d CROSSOVER – POST MOUNTING KIT (2 REQUIRED FOR ALUMINUM PORCH POSTS)

| DESCRIPTION  | WHITE    | SATIN BLACK | AGED BRONZE |
|--|----------|-------------|-------------|
| Mounting Kit for 4¼" x 4¼" Posts (Includes trim ring)* | 73041363 | 73041362    | 73041360    |

\*Mounting kit includes 2-piece trim, mounting plate, and hardware.



## 3 CROSSOVER – POST CAPS

| DESCRIPTION                         | WHITE    | EARTH    | DUNE     |
|-------------------------------------|----------|----------|----------|
| 4" x 4" Flat Post Cap               | 73018076 | 73018074 | 73041484 |
| 4" x 4" New England Post Cap        | 73044950 | 73044951 | 73044952 |
| 4" x 4" Elite Post Cap              | 73018073 | 73018071 | 73041485 |
| 4" x 4" Heritage Post Cap           | 73012500 | N/A      | N/A      |
| 4" x 4" Contemporary Post Cap       | 73019233 | N/A      | N/A      |
| 4" x 4" Contemporary Solar Post Cap | 73019234 | 73045510 | 73045511 |
| 5" x 5" Flat Post Cap               | 73003093 | N/A      | N/A      |
| 5" x 5" New England Post Cap        | 73045003 | N/A      | N/A      |
| 5" x 5" Contemporary Post Cap       | 73013124 | N/A      | N/A      |
| 5" x 5" Contemporary Solar Post Cap | 73013110 | N/A      | N/A      |
| 6" x 6" New England Post Cap        | 73018108 | 73018106 | 73041489 |
| 6" x 6" Elite Post Cap              | 73018105 | N/A      | N/A      |

## 4 CROSSOVER – LIGHTED ACCESSORIES

| DESCRIPTION                                       | WHITE    | EARTH    | DUNE     |
|---|----------|----------|----------|
| 4" x 4" Contemporary LED Post Cap (0.80W) – WHITE | 73019377 | 73045506 | 73045507 |
| 5" x 5" New England LED Post Cap (0.80W) – WHITE  | 73043928 | N/A      | N/A      |
| Dome Light (0.80W) – WHITE                        | 73019404 | 73045508 | 73045509 |
| Stair/Side Light (0.40W) – WHITE                  | 73019411 | N/A      | N/A      |
| Flush Deck Light (0.40W)                          | 73019403 |          |          |

## 4 CROSSOVER – LIGHTING COMPONENTS

| DESCRIPTION   | SKU      |
|---|----------|
| Bluetooth Transformer for LED Lighting System   | 73041277 |
| 2-Way Splitter  | 73019370 |
| 5-Way Splitter  | 73019371 |
| 2' Electrical Lighting Wire   | 73032449 |
| 5' Electrical Lighting Wire   | 73019375 |
| 7' Electrical Lighting Wire   | 73019373 |
| 9' Electrical Lighting Wire   | 73019374 |
| 92" Under Rail LED Lighting (3W for 92" length)   | 73019376 |
| 92" LED Light Channel (10 pack for use with Original Rail, Fynl Line, & Titan Pro Rail) – WHITE | 73024866 |

Transformer is 50W and can be used with lighted post tops or under-rail lighting. Includes photocell, built-in dimmer, timer, and remote. Transformer is Bluetooth capable; "SmartPower50" app available in iTunes and Android store.

## 5 CROSSOVER – TRIM RINGS

| DESCRIPTION                            | WHITE    | EARTH    | DUNE     |
|--|----------|----------|----------|
| 4" x 4" Elite Post Trim Ring           | 73018091 | 73018092 | 73041490 |
| 4" x 4" Heritage Post Trim Ring        | 73012503 | 73045023 | 73045024 |
| 4" x 4" Low Profile Trim Ring          | 73045041 | 73045042 | 73045043 |
| 5" x 5" 2-Piece Trim Ring              | 73043929 | N/A      | N/A      |
| 3.5" to 6.5" – 4-Piece Elite Trim Ring | 73018131 | 73018066 | 73041493 |

## 6 CROSSOVER – STANDARD WIDTH VINYL RAIL GATE KITS (36" WIDTH)

| DESCRIPTION  | WHITE    | EARTH | DUNE |
|--|----------|-------|------|
| Standard Width Gate Kit – 36" H – 1¼" Square Balusters | 73018135 | N/A   | N/A  |

Gate kit includes everything to build a gate panel. Gate hardware sold separately.

## 6 CROSSOVER – CUSTOM WIDTH VINYL RAIL GATE KITS (UP TO 48" WIDTH)

| DESCRIPTION  | WHITE    | EARTH    | DUNE     |
|--|----------|----------|----------|
| Custom Width Gate Kit – 36" H – 1¼" Square Balusters | 73045025 | 73045026 | 73045027 |
| Custom Width Gate Kit – 36" H – 1½" Square Balusters | 73045028 | 73045029 | 73045030 |
| Custom Width Gate Kit – 36" H – 1¼" Turned Balusters | 73045034 | N/A      | N/A      |
| Custom Width Gate Kit – 36" H – 1½" Turned Balusters | 73045044 | 73045045 | 73045046 |
| Custom Width Gate Kit – 36" H – ¾" Round Balusters   | 73045031 | 73045032 | 73045033 |
| Custom Width Gate Kit – 42" H – 1¼" Square Balusters | 73045035 | 73045036 | 73045037 |
| Custom Width Gate Kit – 42" H – 1½" Square Balusters | 73045038 | 73045039 | 73045040 |

Gate kits include everything to build a gate panel. Gate hardware sold separately.

## 7 BOERBOEL® VINYL GATE HARDWARE

| DESCRIPTION                                | BLACK    | WHITE    |
|--|----------|----------|
| Boerboel® Standard Wrap Hinge Pair         | 73028117 | 73025512 |
| Boerboel® GardDog™ Locking Latch Two Sided | 73024418 | 73025501 |
| Boerboel® Gravity Latch                    | 73002252 | 73025491 |
| Boerboel® 24" Heavy Duty Drop Rod          | 73014305 | 73014306 |



# OUTDOOR ACCENTS







**OUTDOOR ACCENTS** provide options for under-deck screening as well as privacy screening on your porch.

**Decorative Screen Panels** provide privacy when hung from your deck or porch, or installed with our **Frame Kits**. Create a high-end unique look to under deck applications. Available in 5 styles and 5 colors, Decorative Screen Panels can also be painted for complete customization.

**Lattice** provides a traditional solution to under deck spaces with 3 patterns for varying degrees of screening and 9 color options.

For a finishing touch, our **Outdoor Shower Kits** offer an easy solution to rinse off from the pool or beach in the privacy of your backyard with 4 easy-to-install options!





# FEATURE SPOTLIGHT





# OUTDOOR ACCENTS

1

## UNIQUE COMPOSITION

Durable textured matte finish and a 0.3" thickness make Decorative Screen Panels a sturdy yet elegant alternative to traditional lattice. And low thermal expansion and contraction ensure they stand up to all types of weather.

2

## FRAME KITS

Frame Kits allow for panels to be installed up to 3 panels high, and posts can be used as end or mid posts for custom configurations. Durable powder-coated aluminum frames can be surface mounted, are easy to install, and come in Satin Black.

3

## LIFETEXTURE™ DESIGN

Our Boardwalk Decorative Screen Panel design features LifeTexture – a 3D design with depth for added dimension

4

## DESIGN VERSATILITY

Decorative Screen Panels can be installed horizontally to finish the base of a deck, hung vertically for privacy in style, or installed with our Frame Kits to create a privacy screen on your deck, porch, or patio!



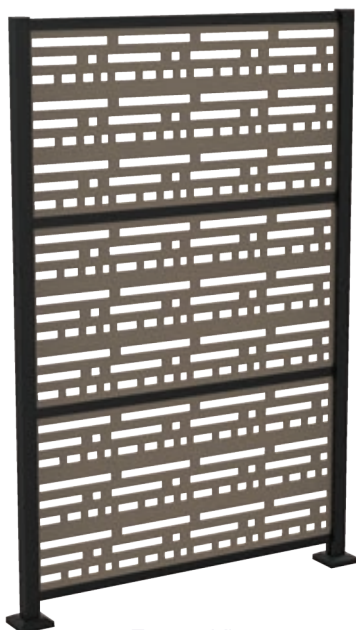


# ORDER OPTIONS

1

## CHOOSE DECORATIVE SCREEN PANELS FRAME KITS

Decorative Screen Panel Frame Kits can hold 1-3 panels (sold separately) depending on your preference and are surface mounted. Powder coated aluminum frame assemblies quickly and easily to create your semi-privacy solution.



Frame Kit



Line Post Kit



Corner Post Kit

3

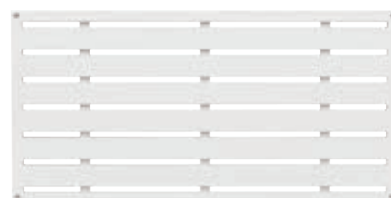
## CHOOSE DECORATIVE SCREEN PANEL FASTENER KITS

Decorative Screen Panel Fastener Kits include 12 stainless steel screws and 12 color matched screw covers – enough to install 3 panels when not using the Decorative Screen Panel Frame Kits. Fastener Kits are not needed if using a Decorative Screen Panel Frame Kit.

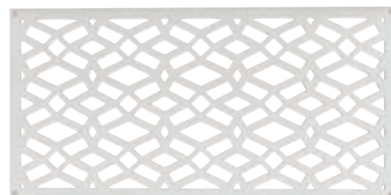
2

## CHOOSE DECORATIVE SCREEN PANELS

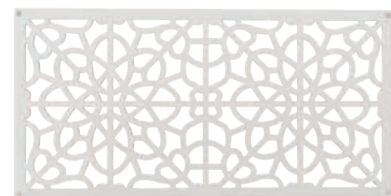
Decorative Screen Panels come in a variety of colors and designs. Install vertically or horizontally. Low thermal expansion and contraction, textured finish that's paintable, and 0.3" thick, Decorative Screen Panels are durable and unique.



Boardwalk\*



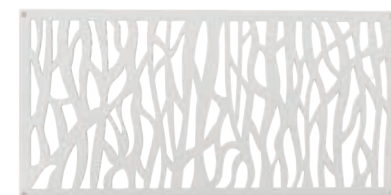
Celtic



Fretwork



Morse



Sprig

\*Our Boardwalk Decorative Screen Panel design features **LifeTexture™** – a 3D design with depth for added realism.



White



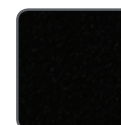
Clay



Saddle



Brazilian Walnut



Black

# OUTDOOR ACCENTS

3

## CHOOSE LATTICE ACCENTS

Lattice comes in a variety of colors and designs to accent and complement your outdoor living space!



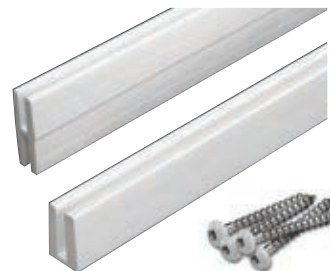
Classic Diamond



Privacy Diamond



Privacy Square



Lattice Divider, Lattice Cap,  
Color Matched Screws



White



Woodland  
Green



Sierra  
Cedar



Redwood



Wicker



Brazilian  
Walnut



Nantucket  
Gray



Better Than  
Treated



Black

4

## CHOOSE AN OUTDOOR SHOWER KIT

Outdoor Shower Kits come in several options so you can create the custom configuration that fits your needs. Shower Kits are available in White and include Boerboel® hardware in Black (Combo Kit and Gate Door Kit).



Combo Kit

Includes 2 walls, 4 posts, 4 post tops, top towel rail bars, gate door, and hardware.



Enclosure Kit

Includes 2 walls, 4 posts, 4 post tops, top towel rail bars, and hardware.



Third Wall Kit

Includes boards, rails, and brackets to build out a wall to attach to a Combo Kit or Enclosure Kit.



Gate Door Kit

Includes boards, rails, and hardware to build out a gate door to attach to a Combo Kit or Enclosure Kit.



# SKU LIST

## 1 OUTDOOR ACCENTS – DECORATIVE SCREEN PANEL FRAME KIT

| DESCRIPTION  | SATIN BLACK     |
|--|-----------------|
| Frame Kit – Can hold 1-3 Decorative Screen Panels (Sold separately)                        | <b>73040779</b> |
| Line Post Kit - To be used with Frame Kit (Sold separately) to Create a Continuous Section | <b>73045675</b> |
| Corner Post Kit - To be used with Frame Kit (Sold separately) to Create a Corner Section   | <b>73045676</b> |

*Decorative Screen Panels Frame Kit contains 2 2" aluminum H-posts, 2 top & bottom U-channels, 2 mid H-channels, 2 post inserts, surface mounting kit, post caps, and hardware.*

*Line & Corner Post Kits contain 1 2" aluminum post (for either line or corner application), 2 top & bottom U-channels, 2 mid H-channels, 2 post inserts, surface mounting kit, post caps, and hardware.*

## 2 OUTDOOR ACCENTS – DECORATIVE SCREEN PANELS

| DESCRIPTION                       | BOARDWALK*      | CELTIC          | FRETWORK        |
|-----------------------------------|-----------------|-----------------|-----------------|
| 4' x 2' x 0.3" – WHITE            | <b>73042821</b> | <b>73004780</b> | <b>73004785</b> |
| 4' x 2' x 0.3" – CLAY             | <b>73042823</b> | <b>73004782</b> | <b>73004787</b> |
| 4' x 2' x 0.3" – SADDLE           | <b>73042824</b> | <b>73004783</b> | <b>73004788</b> |
| 4' x 2' x 0.3" – BRAZILIAN WALNUT | <b>73042826</b> | <b>73004685</b> | <b>73004686</b> |
| 4' x 2' x 0.3" – BLACK            | <b>73042822</b> | <b>73004781</b> | <b>73004786</b> |
| DESCRIPTION                       | MORSE           |                 | SPRIG           |
| 4' x 2' x 0.3" – WHITE            | <b>73004795</b> |                 | <b>73004790</b> |
| 4' x 2' x 0.3" – CLAY             | <b>73004797</b> |                 | <b>73004792</b> |
| 4' x 2' x 0.3" – SADDLE           | <b>73004798</b> |                 | <b>73004793</b> |
| 4' x 2' x 0.3" – BRAZILIAN WALNUT | <b>73004688</b> |                 | <b>73004687</b> |
| 4' x 2' x 0.3" – BLACK            | <b>73004796</b> |                 | <b>73004791</b> |

*Decorative Screen Panels are designed with a matte, textured finish to allow them to be painted for complete customization.*

*\*Boardwalk design features new LifeTexture™, a subtle 3D look for added depth.*

## 3 OUTDOOR ACCENTS – DECORATIVE SCREEN PANEL HARDWARE

| DESCRIPTION   | SKU             |
|---|-----------------|
| Fastener Kit (12 stainless steel screws & 12 color matched screw covers) – WHITE            | <b>73025526</b> |
| Fastener Kit (12 stainless steel screws & 12 color matched screw covers) – CLAY             | <b>73025528</b> |
| Fastener Kit (12 stainless steel screws & 12 color matched screw covers) – SADDLE           | <b>73025529</b> |
| Fastener Kit (12 stainless steel screws & 12 color matched screw covers) – BRAZILIAN WALNUT | <b>73004820</b> |
| Fastener Kit (12 stainless steel screws & 12 color matched screw covers) – BLACK            | <b>73025527</b> |

# OUTDOOR ACCENTS

## 3 OUTDOOR ACCENTS – LATTICE

| COLOR               | CLASSIC DIAMOND<br>(2' x 8') | CLASSIC DIAMOND<br>(4' x 8') | PRIVACY DIAMOND<br>(4' x 8') | PRIVACY SQUARE<br>(4' x 8') |
|---------------------|------------------------------|------------------------------|------------------------------|-----------------------------|
| White               | 73004010                     | 73004026                     | 73004042                     | 73004051                    |
| Woodland Green      | N/A                          | 73004020                     | 73004037                     | N/A                         |
| Sierra Cedar        | N/A                          | 73004021                     | 73004038                     | N/A                         |
| Redwood             | N/A                          | 73004023                     | 73004040                     | N/A                         |
| Wicker              | N/A                          | 73003479                     | 73003329                     | N/A                         |
| Brazilian Walnut    | N/A                          | 73004144                     | 73004142                     | N/A                         |
| Nantucket Gray      | N/A                          | 73004145                     | 73004143                     | N/A                         |
| Better Than Treated | N/A                          | 73004027                     | 73004108                     | N/A                         |
| Black               | N/A                          | 73004497                     | 73004479                     | N/A                         |

Lattice comes in a variety of color options and is NOT intended to be painted.

## 3 OUTDOOR ACCENTS – LATTICE ACCESSORIES

| COLOR               | CAP MOLDING | DIVIDERS | 1 ½" SS SCREWS (12) |
|---------------------|-------------|----------|---------------------|
| White               | 73004058    | 73004066 | 73003464            |
| Woodland Green      | 73004057    | 73004079 | 73003466            |
| Sierra Cedar        | 73004059    | 73004067 | 73003467            |
| Redwood             | 73004061    | 73004069 | 73003470            |
| Wicker              | 73003480    | 73003481 | 73003473            |
| Brazilian Walnut    | 73004140    | 73004138 | 73003999            |
| Nantucket Gray      | 73004141    | 73004139 | 73013281            |
| Better Than Treated | 73004064    | 73004081 | 73003472            |
| Black               | 73004496    | 73004477 | 73014290            |

## 4 OUTDOOR ACCENTS – OUTDOOR SHOWER KITS

| DESCRIPTION  | WHITE    |
|--|----------|
| Shower Combo Kit (Includes 2 walls, 4 posts, 4 post caps, top rails, 1 gate, & hardware)         | 73040247 |
| Shower Enclosure Kit (includes 2 walls, 4 posts, 4 posts caps, top rails & hardware)             | 73040248 |
| Third Wall (Includes boards, rails, & hardware to assemble a third wall to use with Shower Kits) | 73040244 |
| Shower Door Gate Kit (Includes boards, rails, & hardware to assemble a gate door)                | 73040245 |





FOR HOME, FOR LIFE®

545 TILTON ROAD  
EGG HARBOR CITY, NJ 08215

TEL: (877) 420-7245  
FAX: (866) 277-5160  
E-MAIL: CS@RDIRAIL.COM  
URL: WWW.RDIRAIL.COM

A photograph of a modern outdoor deck at dusk. The deck has a wooden floor and a dark metal railing. A rocking chair with a brown cushion and two patterned pillows sits on the deck. A small table with a lantern is also visible. The background shows a house with horizontal siding and trees.

*we're social!*

Follow us on our social media sites!



51012245  
REV. 10.19

