



U.S. LUMBER

Quick Reference Guide

LUMBER FOOTAGE CONVERSION TABLE

To convert board footage to lineal footage, take the board footage and multiply it by the corresponding factors below

ITEM	LINEAR FOOTAGE FACTOR	ITEM	LINEAR FOOTAGE FACTOR	ITEM	LINEAR FOOTAGE FACTOR
1X2	.1667	2X6	1.000	4X12	4.000
1X4	.3333	2X8	1.333		
1X6	.5000	2X10	1.667	6X6	3.000
1X8	.6667	2X12	2.000	6X8	4.000
1X10	.8333			6X10	5.000
1X12	1.000	3X3	.7500	6X12	6.000
		3X4	1.000		
5/4X4	.4167	3X6	1.500	8X8	5.333
5/4X5	.5208	3X8	2.000	8X10	6.667
5/4X6	.6250	3X10	2.500	8X12	8.000
5/4X8	.8333	3X12	3.000		
5/4X10	1.0417			10X10	8.333
5/4X12	1.250	4X4	1.333	10X12	10.00
		4X6	2.000		
2X2	.3333	4X8	2.667	12X12	12.00
2X4	.6667	4X10	3.333		

PATTERN COVERAGE ESTIMATING TABLE

Determine the amount of material needed for the basic types of wood siding by multiplying square footage to be covered by the lineal foot factor

PATTERN	NOMINAL WIDTH	WIDTH		FACTOR FOR LINEAL FEET ¹	FACTOR FOR BOARD FEET ²
		DRESSED	EXPOSED FACE		
BEVEL & BUNGALOW	4	3 1/2	2 1/2	4.8	1.60
	6	5 1/2	4 1/2	2.67	1.33
	8	7 1/4	6 1/4	1.92	1.28
	10	9 1/4	8 1/4	1.45	1.21
DROP, T&G & CHANNEL RUSTIC	4	3 3/8	3 1/8	3.84	1.28
	6	5 3/8	5 1/8	2.34	1.17
	8	7 1/8	6 7/8	1.75	1.16
	10	9 1/8	8 7/8	1.35	1.13

¹ Lineal Foot Factor is derived by dividing 12" by the exposed face width.
² Board Foot Factor is derived by dividing the nominal width by the exposed face width and is based on nominal 1" stock, except log cabin. Log cabin is based on 2" thickness. For nominal 1" stock, except log cabin. Log cabin is based on 2" thickness. For nominal 1 1/2" log cabin, multiply by .75.

Note: Factors do not include any allowance for trim or waste and do not apply to diagonal installations. A 10% allowance (for trim and waste) should be added to the square footage required before the factors are used.

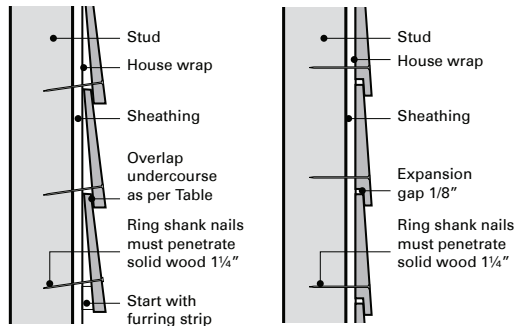
DECK COVERAGE ESTIMATING TABLE

To help figure the amount of decking needed for a project, use the following linear footage calculator.

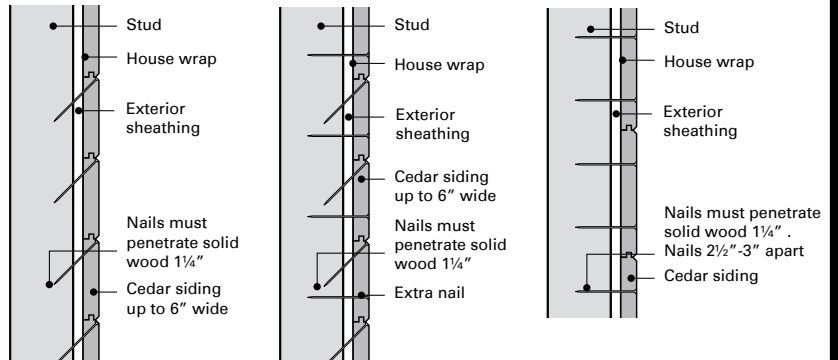
To cover 100 square feet of deck:

NOMINAL SIZE (IN.)	LINEAR FEET
1-1/4X4	325
2X4	325
1-1/4X6	211
2X6	211

INSTALLING BEVEL SIDING



INSTALLING TONGUE AND GROOVE

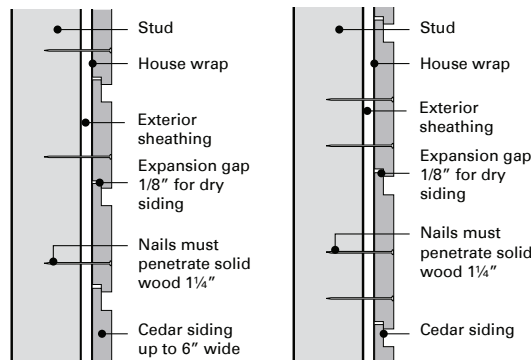


(A) 6" and narrower siding in normal climatic conditions

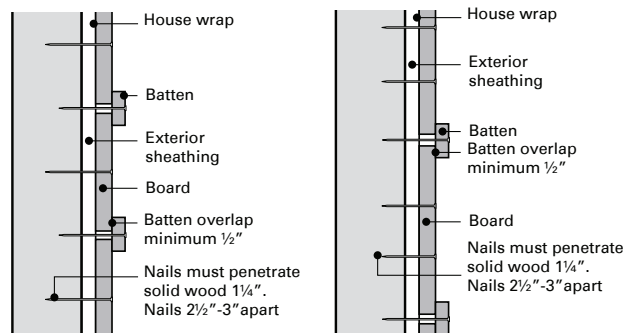
(B) 6" and narrower siding in hot, dry, windy or seacoast climates

(C) 8" and wider siding

INSTALLING LAP SIDINGS



INSTALLING BOARD-AND-BATTEN SIDING



(A) Narrow boards 6"

(B) Wide boards 8" and wider



U.S. LUMBER

Cedar & Cypress

4627 J.P. Hall Blvd, Ste 107 | Green Cove Springs, FL 32043 | 888-280-4499

WESTERN RED CEDAR KNOTTY SIDING

11/16X8 Select Knotty Bevel KD
11/16X10 Select Knotty Bevel KD
5/4X8 Select Knotty Rabbeted Bevel KD
1X8, 1X10 Select Knotty Channel Rustic Grn
1X6, 1X8 Select Knotty T&G VJT rev.
2X6 Select Knotty T&G VJT
1X6 A&Btr T&G VJT rev.

WESTERN RED CEDAR CLEAR FINGERJOINT

1X4-1X12 A&BTR Evergreen FJ raw S4S KD
1X4-1X12 A&BTR Evergreen FJ primed S4S KD
5/4X4, 5/4X6 A&BTR Evergreen FJ primed S4S KD
2X4-2X8, 2X12 A&BTR Evergreen FJ raw S4S KD
2X4-2X12 A&BTR Evergreen FJ primed S4S KD

WESTERN RED CEDAR KNOTTY BOARDS

1X2-1X12 Select Knotty S1S2E Grn
5/4X4-5/4X12 Select Knotty S1S2E Grn

WESTERN RED CEDAR DIMENSION

2X2-2X12 Appearance RGH

WESTERN RED CEDAR SHAKES/SHINGLES

18" Perfection Shingles #1*
18" Perfection Shingles #1 Class C Firetreated*
Medium 24" Shakes Class C Firetreated*
Medium 24" Shakes Class B Firetreated*
18" R&R Shingles #1*
18" Natural Groove*
24" Tapersawn Hip & Ridge Class C&B Firetreated*
Medium and Heavy 24" Shakes
Medium and Heavy 24" Shakes CCA
18" Perfection Shingles #1 and #2
18" Perfection Shingles #1 and #2 CCA
18" Fancy Cut Fishscale
24" Tapersawn Hip and Ridge
24" Tapersawn Hip and Ridge CCA
Cedar Breather
16" Undercourse Shingles Eastern White Cedar
Builders Shims Eastern White Cedar

**Carries a FL# and/or Dade County Approved*

WESTERN RED CEDAR TIMBERS

3X6-3X12 Appearance RGH
4X4-4X12 Appearance RGH
6X6, 6X8, 6X12 Appearance RGH
8X8 Appearance RGH

CEDAR VALLEY

7.25" Even Butt VG Contemporary Spacing
7.25" Stag Butt VG Contemporary Spacing
7.25" Even Butt Coastal MG Keyway Spacing
7.25" Flush Corners VG

CYPRESS BOARDS AND PATTERNS

1X4-1X12 #2 S1S2E 7/8" KD
1X6 #2 T&G VJT KD 3/4" (Smooth Face)
1X6 #2 E&CB W/V-back KD 3/4" (Smooth Face)
2X4-2X8 #2 S1S2E KD
1X8 #2 Bevel Siding (Rgh Face)
1X6 #1 Pecky T&G VJT KD 3/4" (Smooth Face)
1X4-1X12 Select S4S 3/4" KD
1X6 Select T&G VJT KD 3/4" (Smooth Face)
1X6 Select E&CB W/V-back KD 3/4" (Smooth Face)
2X4, 2X6 Select S4S KD
2X6 Select T&V VJT/sq back
1X8 Select Bevel Siding (Smooth Face)
2X4, 2X6 Select S4S KD
9/16X5-1/4 Select KD 45 Crown
9/16X3-5/8 Select KD 49 Crown

Synergy Wood Products

1X6 #3&BTR IRC T&G VJT (Available in Clear)
1X6 #2 Cypress T&G VJT (available in Auburn, Clear, Colonial, Cottage & Honey)
1X6 EPeck Cypress T&G VJT (available in Auburn, Colonial)
1X6 Select Cypress T&G VJT (available in Auburn, Clear, Colonial)
1-1/2 Ceiling Trim IRC Clear
1-1/2 Ceiling Trim Select Cypress (available in Auburn, Clear, Colonial, Cottage & Honey)

We also have many special order options available in Cedar and Cypress.