



U.S. LUMBER

# Quick Reference Guide

## LUMBER FOOTAGE CONVERSION TABLE

To convert board footage to lineal footage, take the board footage and multiply it by the corresponding factors below

ITEM	LINEAR FOOTAGE FACTOR	ITEM	LINEAR FOOTAGE FACTOR	ITEM	LINEAR FOOTAGE FACTOR
1X2	.1667	2X6	1.000	4X12	4.000
1X4	.3333	2X8	1.333		
1X6	.5000	2X10	1.667	6X6	3.000
1X8	.6667	2X12	2.000	6X8	4.000
1X10	.8333			6X10	5.000
1X12	1.000	3X3	.7500	6X12	6.000
		3X4	1.000		
5/4X4	.4167	3X6	1.500	8X8	5.333
5/4X5	.5208	3X8	2.000	8X10	6.667
5/4X6	.6250	3X10	2.500	8X12	8.000
5/4X8	.8333	3X12	3.000		
5/4X10	1.0417			10X10	8.333
5/4X12	1.250	4X4	1.333	10X12	10.00
		4X6	2.000		
2X2	.3333	4X8	2.667	12X12	12.00
2X4	.6667	4X10	3.333		

## PATTERN COVERAGE ESTIMATING TABLE

Determine the amount of material needed for the basic types of wood siding by multiplying square footage to be covered by the lineal foot factor

PATTERN	NOMINAL WIDTH	WIDTH		FACTOR FOR LINEAL FEET <sup>1</sup>	FACTOR FOR BOARD FEET <sup>2</sup>
		DRESSED	EXPOSED FACE		
BEVEL & BUNGALOW	4	3 1/2	2 1/2	4.8	1.60
	6	5 1/2	4 1/2	2.67	1.33
	8	7 1/4	6 1/4	1.92	1.28
	10	9 1/4	8 1/4	1.45	1.21
DROP, T&G & CHANNEL RUSTIC	4	3 3/8	3 1/8	3.84	1.28
	6	5 3/8	5 1/8	2.34	1.17
	8	7 1/8	6 7/8	1.75	1.16
	10	9 1/8	8 7/8	1.35	1.13

<sup>1</sup> Lineal Foot Factor is derived by dividing 12" by the exposed face width.  
<sup>2</sup> Board Foot Factor is derived by dividing the nominal width by the exposed face width and is based on nominal 1" stock, except log cabin. Log cabin is based on 2" thickness. For nominal 1" stock, except log cabin. Log cabin is based on 2" thickness. For nominal 1 1/2" log cabin, multiply by .75.

Note: Factors do not include any allowance for trim or waste and do not apply to diagonal installations. A 10% allowance (for trim and waste) should be added to the square footage required before the factors are used.

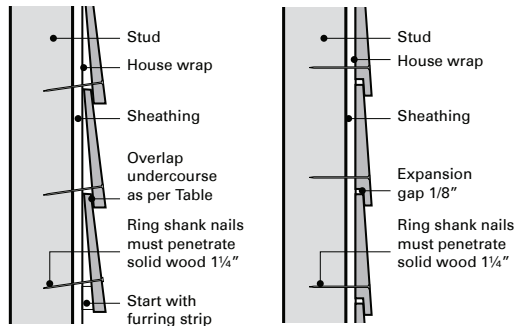
## DECK COVERAGE ESTIMATING TABLE

To help figure the amount of decking needed for a project, use the following linear footage calculator.

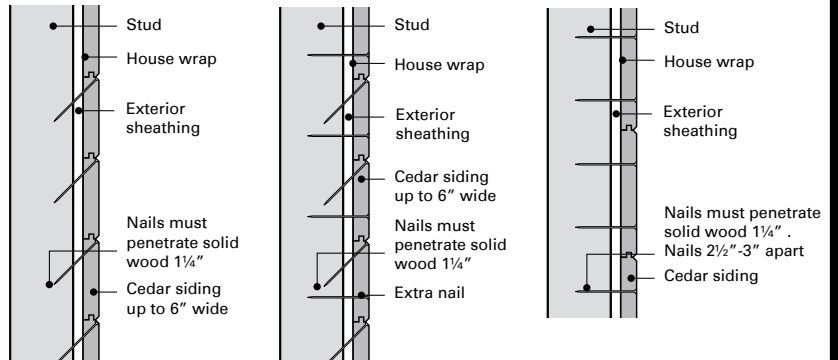
To cover 100 square feet of deck:

NOMINAL SIZE (IN.)	LINEAR FEET
1-1/4X4	325
2X4	325
1-1/4X6	211
2X6	211

## INSTALLING BEVEL SIDING



## INSTALLING TONGUE AND GROOVE

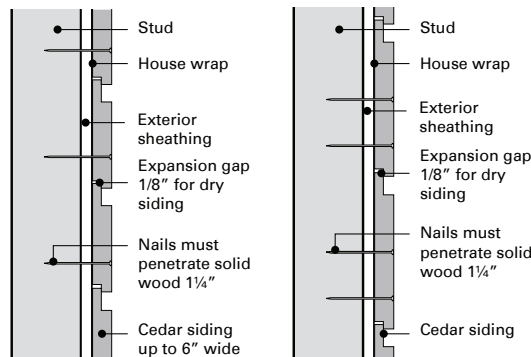


(A) 6" and narrower siding in normal climatic conditions

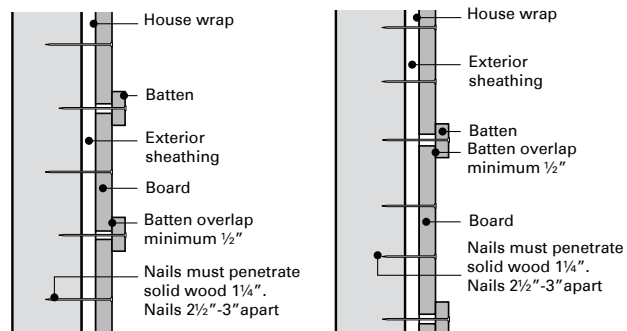
(B) 6" and narrower siding in dry, windy or seacoast climates

(C) 8" and wider siding

## INSTALLING LAP SIDINGS



## INSTALLING BOARD-AND-BATTEN SIDING



(A) Narrow boards 6"

(B) Wide boards 8" and wider



U.S. L U M B E R

**Cedar**

504 Advantage Way | Aberdeen, MD 21001 | 888-889-5430

### **WESTERN RED CEDAR CLEAR FINISH**

1/2X6 A&BTR Bevel Siding KD  
1/2X8 A&BTR Bevel Siding KD  
1X4, 1X6, 1X8 A&BTR T&G VJT rev. KD  
1X4-1X12 A&BTR S1S2E KD  
5/4X4 A&BTR Radius Edge KD  
5/4X6 C&BTR Radius Edge Decking GRN  
5/4X4-5/4X12 A&BTR S1S2E KD  
2X2-2X6 C&BTR S4S GRN  
2X4-2X12 A&BTR S4S KD

### **WESTERN RED CEDAR KNOTTY KD SIDING**

5/8X8 Select Knotty Bevel KD  
11/16X8 Select Knotty Bevel KD  
1X6 Select Knotty T&G VJT rev. KD

### **WESTERN RED CEDAR KNOTTY BOARDS**

1X2-1X12 Select Knotty S1S2E GRN  
5/4X4-5/4X12 Select Knotty S1S2E GRN

### **WESTERN RED CEDAR DIMENSION**

2X4-2X8 Appearance Knotty S4S KD  
2X10-2X12 Appearance Knotty S4S GRN  
5/4X6 Knotty Radius Edge Decking

### **WESTERN RED CEDAR TIMBERS**

4X4 Appearance Knotty S4S  
4X4 C&BTR Clear S4S  
3X8, 3X10 Appearance Knotty RGH  
4X6, 4X8, 4X12 Appearance Knotty RGH  
6X6, 6X8, 6X12 Appearance Knotty RGH  
6X6 Appearance Knotty S4S  
6X6 C&BTR Clear S4S  
8X8, 10X10, 12X12 Appearance Knotty RGH

### **WESTERN RED CEDAR SHAKES/SHINGLES**

Medium 24" Shakes Bureau Label  
Medium 24" CCA Shakes Bureau Label  
Heavy 24" Shakes Bureau Label  
#1 5/8 18" Tapersawn Shakes Bureau Label  
#1 5/8 24" Tapersawn Shakes Bureau Label  
#1 5/8 24" Tapersawn Shakes CCA Bureau Label  
#1 7/8 24" Tapersawn Shakes Bureau Label  
#1 18" Perfection Shingles Bureau Label  
#1 18" Perfection Shingles Non-Bureau Label  
#1 18" Perfection CCA Shingles Bureau Label  
#1 24" Royal Shingles Bureau Label  
#1 24" Royal CCA Shingles Bureau Label  
#2 18" Perfection Shingles Bureau Label  
#2 18" Perfection CCA Shingles Bureau Label  
5/8 24" Tapersawn Hip and Ridge Bureau Label  
5/8 24" Tapersawn Hip and Ridge CCA Bureau  
16" Undercourse Shingles Eastern White Cedar  
Builders Shims Eastern White Cedar

### **WESTERN RED CEDAR LATTICE**

4X8 #1 HD Diagonal Garden Lattice  
4X8 #1 HD Diagonal Privacy Lattice  
4X8 #1 HD Square Garden Lattice  
4X8 #1 HD Square Privacy Lattice  
2X2 8' HD Lattice Cap Moulding  
2X2 8' HD Lattice Divider Moulding